



**The Gables, Verwood Road**  
Three Legged Cross, Wimborne BH21 6RW  
**Guide Price £825,000**

**Winkworth**





**GUIDE PRICE £825,000**  
**FREEHOLD**

**‘The Gables’ sits proudly on a stunning plot of approx a third of an acre with direct views over woodland and complete seclusion. This wonderful four bedroom three bathroom family home is approached via gates and has been finished to an exceptional standard throughout.**

**There is off road parking for several vehicles, an amazing garden for entertaining in warmer months and to enjoy family life from as well further potential for extension if required.**

**Detached House  
Car Charging Point  
Luxury En-suite Bedroom  
Modern Integrated Kitchen  
Utility Room  
Stunning Secure & Secluded Plot  
Two Reception Rooms  
Beautifully Finished Throughout  
Parking For Several Vehicles  
Outdoor Garage and Home Office**

**EPC D I Council Tax Band F**

**01202 434365**  
**ferndown@winkworth.co.uk**

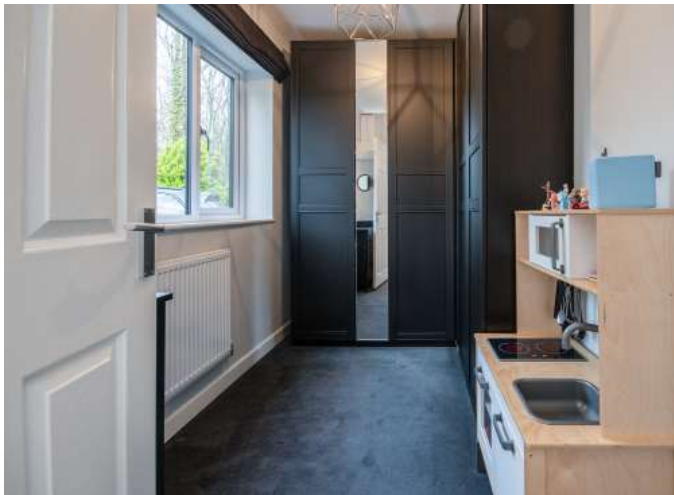




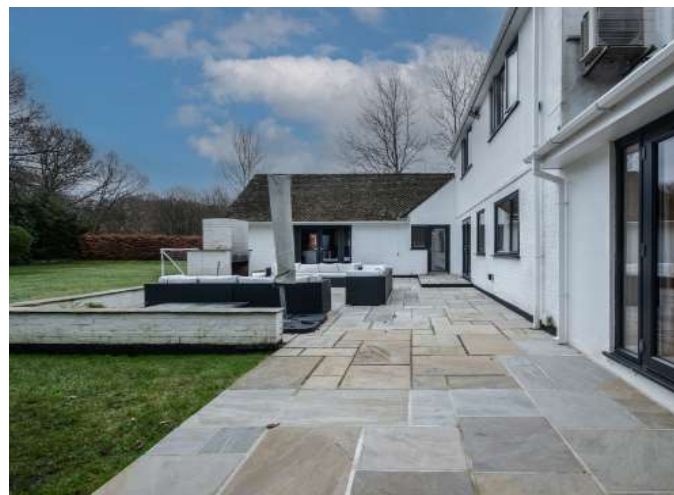




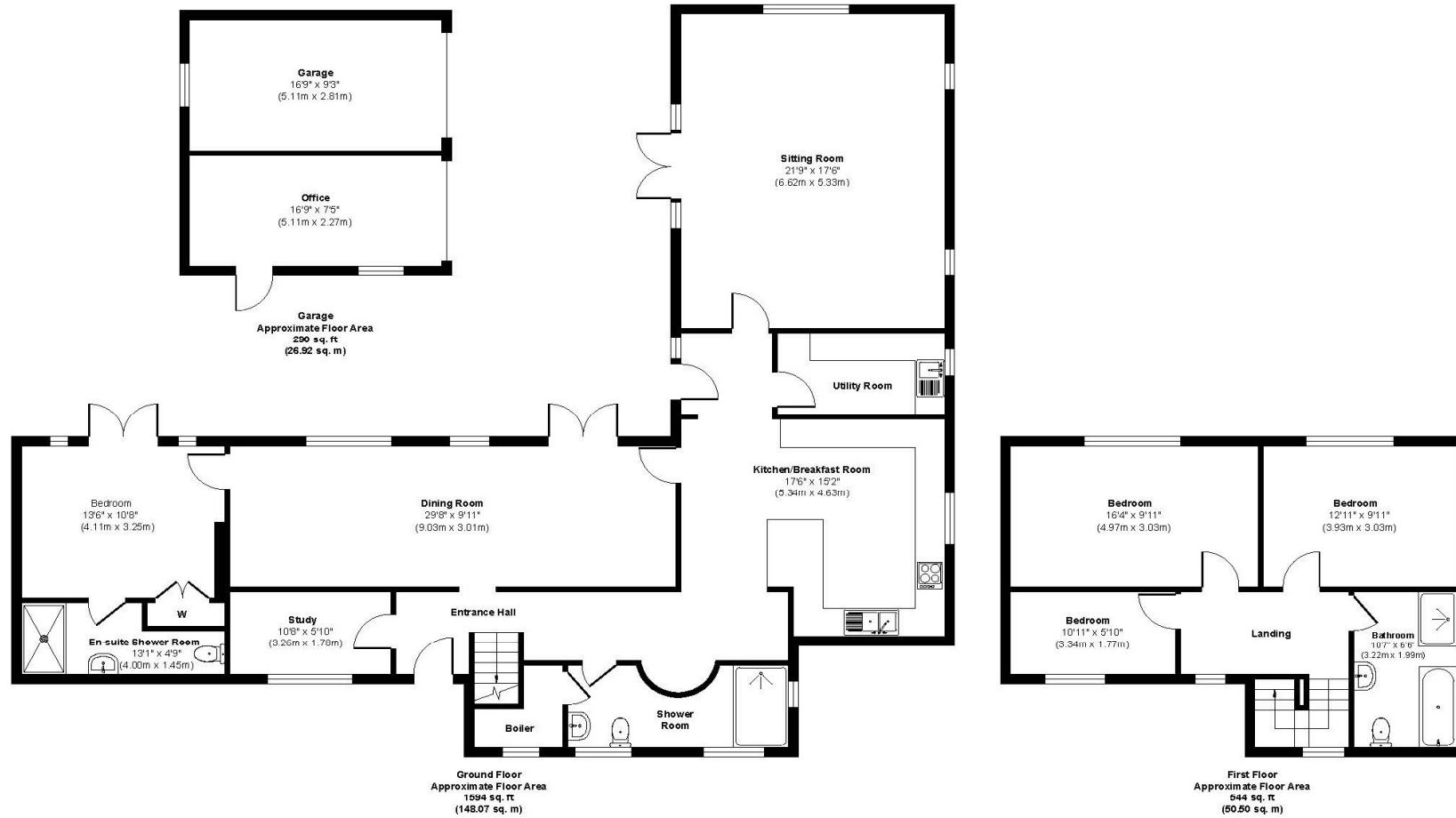








## The Gables



Approx. Gross Internal Floor Area 2427 sq. ft / 225.50 sq. m





## LOCATION

Located conveniently close to local amenities and just 15 minutes from the market towns of Wimborne and Ringwood, both of which have a range of independent cafes, restaurants, leisure facilities and a Waitrose supermarket. The ever popular Moors Valley Country Park and Snowtrax Alpine Activity Centre are just a short distance away and for the keen golfer, several of Dorset's premier Golf clubs are nearby. Award winning beaches are just 20 minutes drive and the nearby A31 provides quick access to the New Forest, Southampton, London and beyond for the commuter by car.

## Winkworth Ferndown

406 Ringwood Road, Ferndown, Dorset, BH22 9AU

01202 434365 | [ferndown@winkworth.co.uk](mailto:ferndown@winkworth.co.uk)

[winkworth.co.uk/ferndown](http://winkworth.co.uk/ferndown)

**Winkworth**