



CARLY MEWS, LONDON, E2
£850,000 FREEHOLD

A STYLISH 1182 SQ/FT THREE BEDROOM
FREEHOLD HOUSE IN A SECURE GATED
DEVELOPMENT.

Shoreditch | 020 7749 7650 | shoreditch@winkworth.co.uk



winkworth.co.uk

See things differently



DESCRIPTION:

Beautifully presented, stylish three-bedroom, two-bathroom house in Carly Mews; E2. This spacious Freehold property is set in a secure, gated development, a 10-minute walk from Bethnal Green Station, and the trendy Brick Lane and Shoreditch.

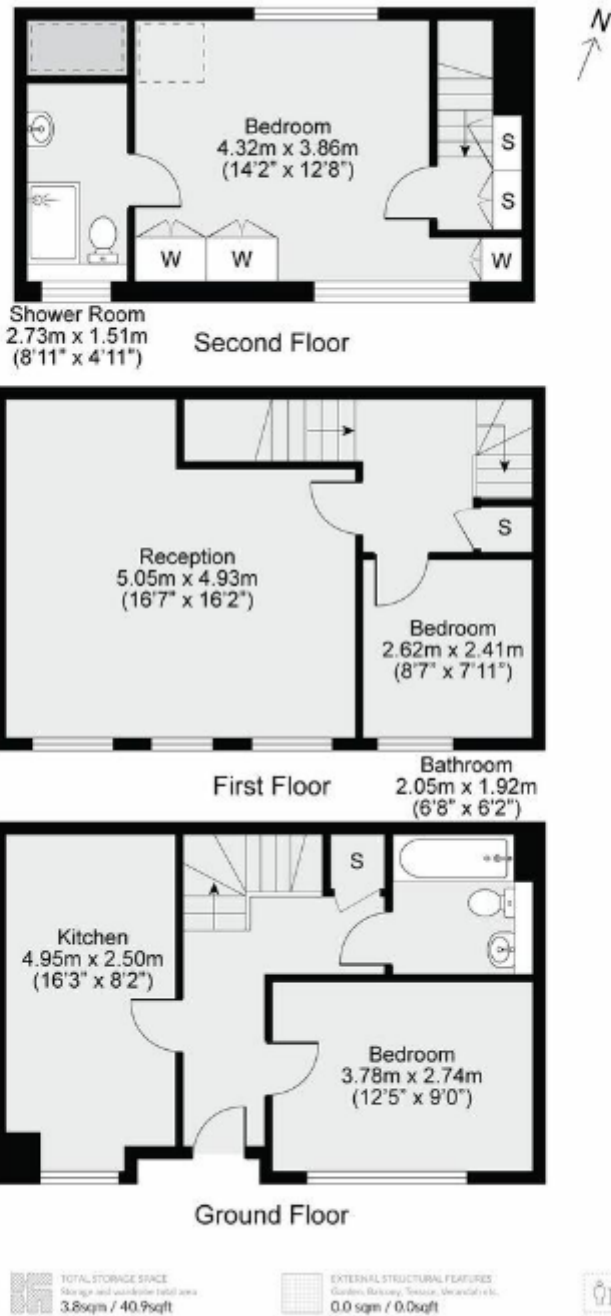
Comprising a large reception, a separate kitchen, two spacious double bedrooms - the main one on the top floor including a contemporary ensuite and fitted wardrobes, a third single bedroom and a family bathroom. It further benefits from a large communal outdoor space. This amazing 1182 sq ft property is finished to a high standard and was renovated in 2021.

Enviably located in close proximity to numerous local amenities and leisure options, with a selection of restaurants, bars, greenspaces and shops just a short stroll away. Excellent transport links are available, facilitating commute to the City & Canary Wharf. The Elizabeth line can also be found at Liverpool Street Station.

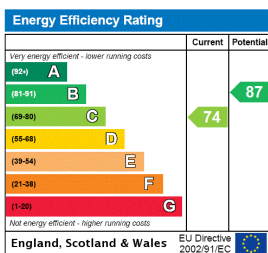
Winkworth



Winkworth



This floorplan is for illustration purposes only and is not to scale. The position and size of doors, windows, appliances and other features are approximate.



Shoreditch | 020 7749 7650 | shoreditch@winkworth.co.uk



winkworth.co.uk

See things differently

Winkworth wishes to inform prospective buyers and tenants that these particulars are a guide and act as information only. All our details are given in good faith and believed to be correct at the time of printing but they don't form part of an offer or contract. No Winkworth employee has authority to make or give any representation or warranty in relation to this property. All fixtures and fittings, whether fitted or not are deemed removable by the vendor unless stated otherwise and room sizes are measured between internal wall surfaces, including furnishings.