



Winkworth



Winkworth



Winkworth

WHITEHALL CLOSE, HERTFORDSHIRE, WD6
£270,000 LEASEHOLD

ONE BEDROOM FIRST FLOOR FLAT WITH RESIDENTS PARKING

Borehamwood | 020 8953 8899 | borehamwood@winkworth.co.uk



DESCRIPTION:

This one bedroom first floor purpose built flat with lift access would make an ideal purchase for a first time buyer, downsizer or buy to let investor.

Located a short walk from Borehamwood Thameslink station and the High Street the property measures circa 461 square feet and benefits from a Southerly facing balcony, gas central heating and allocated parking space.

AT A GLANCE

- 1 Bedroom
- Lift Access
- Balcony
- Double Glazed
- Allocated Parking Space
- 106 Year Lease





Approximate Gross Internal Area
42.8 sq m / 461 sq ft

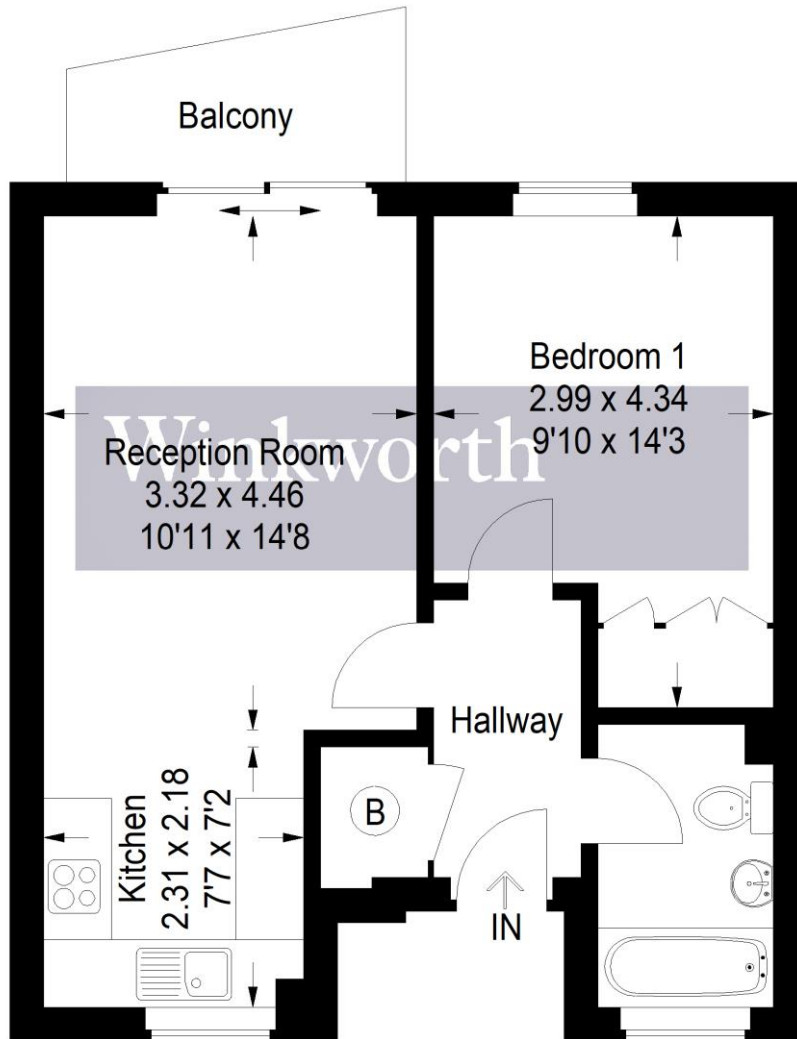


Illustration for identification purposes only,
measurements are approximate,
not to scale. Winkworth © 2022 (ID 855775)

This floorplan is for illustration purposes only and is not to scale. The position and size of doors, windows, appliances and other features are approximate.

Energy Efficiency Rating		
	Current	Potential
Very energy efficient - lower running costs		
A (92-100)		
B (81-91)		
C (69-80)	80	80
D (55-68)		
E (39-54)		
F (21-38)		
G (1-20)		
Not energy efficient - higher running costs		
England, Scotland & Wales		EU Directive 2002/91/EC

Tenure: Leasehold

Term: 106 year and 3 months

Service Charge: £0 per annum

Ground Rent: £ 0 Annually (subject to increase)

Council Tax Band:

Where no figures are shown, we have been unable to ascertain the information. All figures that are shown were correct at the time of printing.