



THE GROVE, LONDON, N3
£300,000 LEASEHOLD

A WELL PRESENTED ONE BEDROOM FIRST FLOOR APARTMENT

Finchley | 020 8349 3388 | finchley@winkworth.co.uk

Winkworth

for every step...

winkworth.co.uk



DESCRIPTION:

Set within a stone's throw of Finchley Central Underground Station, local shopping amenities and recreational parkland, we are pleased to offer this well presented one bedroom first floor apartment. The property comprises fully fitted kitchen and bathroom, good size reception room and double bedroom. Further benefits include communal gardens and a parking space. The property is offered on a chain free basis and would ideally suit a First Time Buyer or Buy-to-Let Investor.

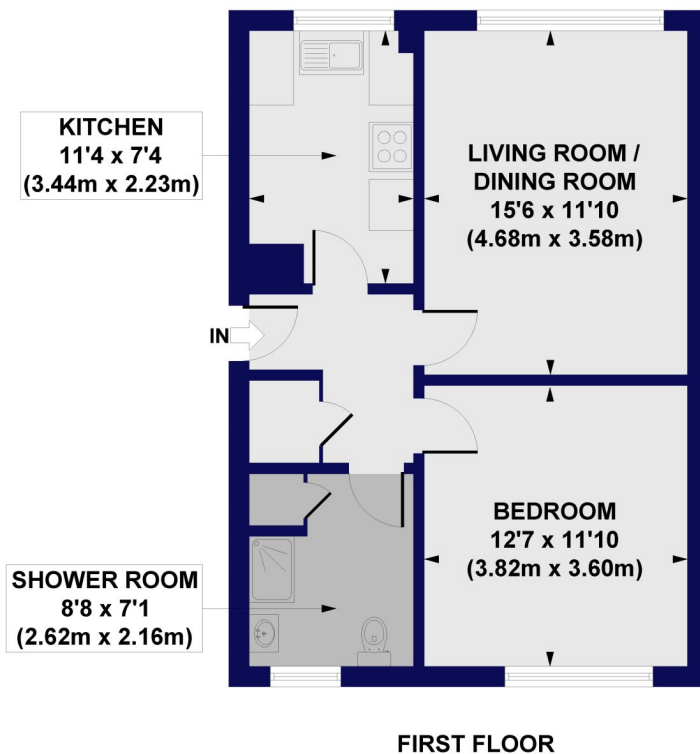
AT A GLANCE

- Purpose built development
- First floor apartment
- Fully fitted kitchen & bathroom
- One double bedroom
- Allocated parking space
Communal gardens
- Offered chain free
- Close to underground & amenities





Marlow Court, The Grove, N3
 Approx. Gross Internal Floor Area 555 sq. ft / 51.55 sq. m



All measurements of walls, doors, windows, fittings and appliances, including their size and location, are shown as standard sizes and do not constitute any warranty or representation by the seller, their agent or CP Creative. Any intending purchaser must satisfy himself by inspection or otherwise as to the correctness of the information contained in these plans. This plan is for illustrative purposes only and should be used as such by any prospective purchasers.

Winkworth

This floorplan is for illustration purposes only and is not to scale. The position and size of doors, windows, appliances and other features are approximate.

Energy Efficiency Rating	
	Potential
Very energy efficient - lower running costs	
(92+) A	
(81-91) B	
(69-80) C	75
(55-68) D	79
(39-54) E	
(21-38) F	
(1-20) G	
Not energy efficient - higher running costs	
England, Scotland & Wales	EU Directive 2002/91/EC

Winkworth

Finchley | 020 8349 3388 | finchley@winkworth.co.uk

for every step...

winkworth.co.uk

Winkworth wishes to inform prospective buyers and tenants that these particulars are a guide and act as information only. All our details are given in good faith and believed to be correct at the time of printing but they don't form part of an offer or contract. No Winkworth employee has authority to make or give any representation or warranty in relation to this property. All fixtures and fittings, whether fitted or not are deemed removable by the vendor unless stated otherwise and room sizes are measured between internal wall surfaces, including furnishings.