



## Durley Place

Station Road Hook RG27

### Description

**BRAND NEW** - Set within the popular 'Bartley Square' development by Bellway Homes, this stylish apartment has open plan living accommodation together with two double bedrooms.

Situated on the first floor this corner apartment benefits from natural light and has a lift which you can take to the underground secure parking.

Inside the apartment there is a spacious hallway leading off to all rooms. There is also a large storage area/utility cupboard. The two double bedrooms both have built in storage and there is an en suite to the main bedroom plus a bathroom.

Another bonus to this apartment is having two secure parking spaces.

The property will be available from 1st November.



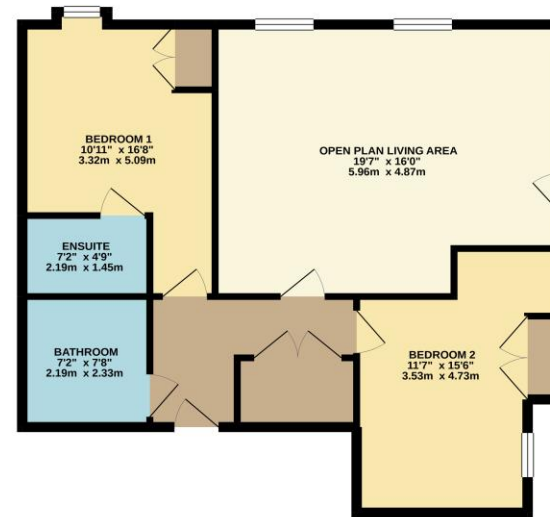
**Winkworth**

## HEADER

- BRAND NEW Apartment
- Two double bedrooms
- Open plan living area
- Ensuite to Master bedroom
- Two allocated secure parking spaces
- Walking distance to Hook train station

Under the Property Misdescriptions Act 1991, these Particulars are a guide and act as information only. All details are given in good faith and are believed to be correct at time of printing. Winkworth give no representation as to their accuracy and potential purchasers or tenants must satisfy themselves by inspection or otherwise as to their correctness. No employee of Winkworth has authority to make or give any representation or warranty in relation to this property.

GROUND FLOOR  
767 sq.ft. (71.2 sq.m.) approx.



TOTAL FLOOR AREA: 767 sq. ft. (71.2 sq. m.) APPROX.  
While every attempt has been made to ensure the accuracy of the floorplan contained here, measurements of rooms, fixtures, fittings, etc. are approximate and no responsibility is taken for any error, omission or mis-statement. The floorplan is provided for information only and should not be used for any purpose other than that for which it was prepared. The floorplan is provided for information only and should not be used for any purpose other than that for which it was prepared. © Winkworth 2023



## Basingstoke Office

10B Church Street, Basingstoke, Hampshire, RG21 7QE  
01256 811730 | basingstoke@winkworth.co.uk

[winkworth.co.uk/Basingstoke](http://winkworth.co.uk/Basingstoke)

# Winkworth

See things differently.