



GOLDRING WAY, ST. ALBANS, HERTFORDSHIRE, AL2

£450,000 LEASEHOLD

A TWO BEDROOM, TWO BATHROOM GARDEN APARTMENT WITH ALLOCATED PARKING

Borehamwood | 020 8953 8899 | borehamwood@winkworth.co.uk



DESCRIPTION:

Located in the highly sought after and desirable Napsbury Park is this well presented two bedroom two bathroom purpose built Garden apartment with adjacent allocated parking.

Forming part of this Exclusive development of only twenty apartments which were constructed approx. 5 years ago, the property is sold with the benefit and peace of mind of BLP insurance which provides cover for the fabric of the building in the unlikely event that a structural issue should occur.

Energy performance rating of B

AT A GLANCE

- Two Bedrooms
- Two Bathrooms
- 782 Square Feet
- Own Rear Garden
- Allocated Parking Space
- Gas Central Heating
- BLP Warranty
- Double Glazed
- Chain Free





Winkworth



Winkworth



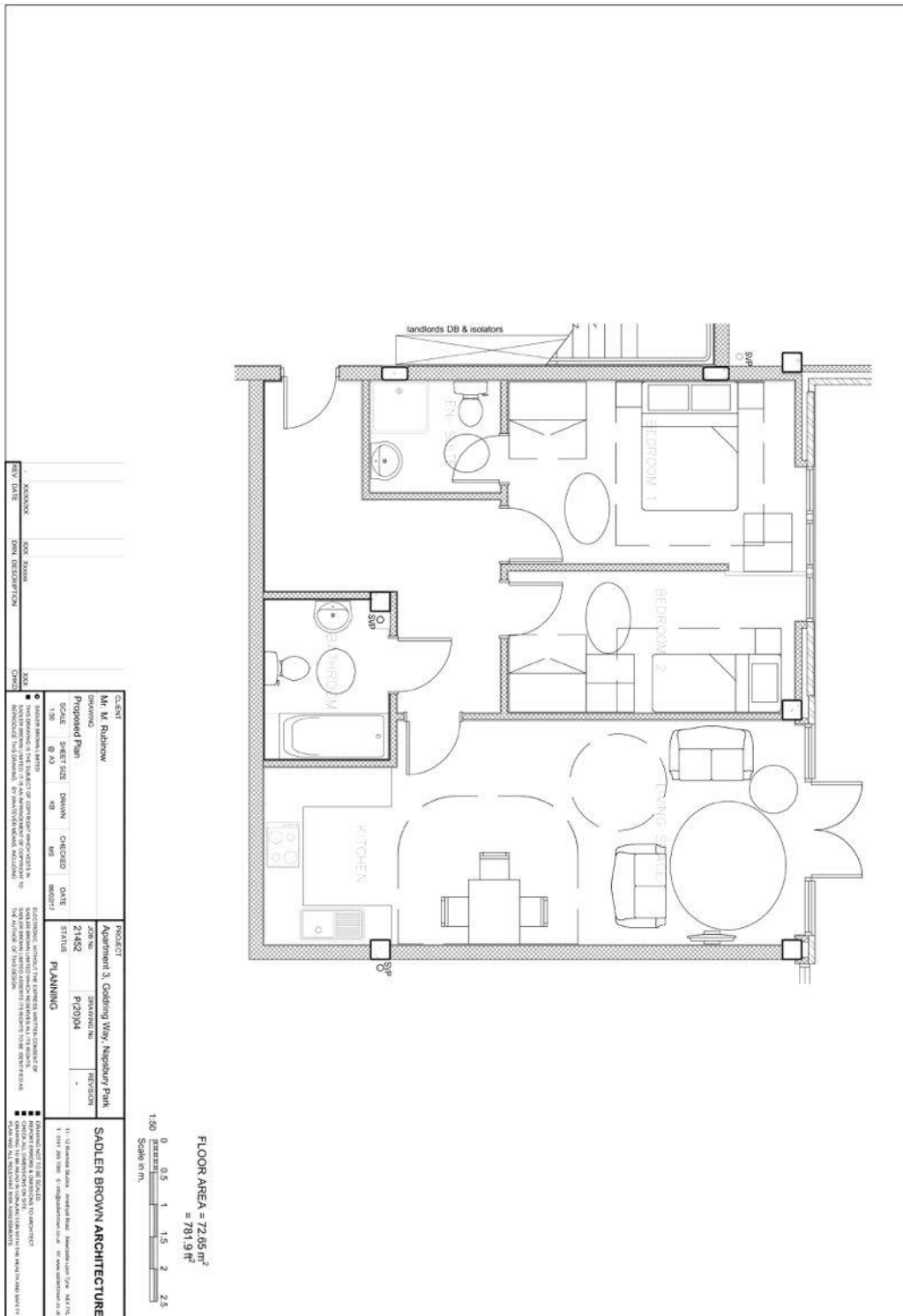
Winkworth



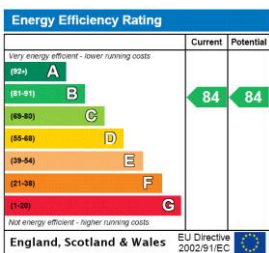
Winkworth



Winkworth



This floorplan is for illustration purposes only and is not to scale. The position and size of doors, windows, appliances and other features are approximate.



Tenure: Leasehold

Term: TBA

Service Charge: TBA

Ground Rent: £250

Council Tax Band: D

Where no figures are shown, we have been unable to ascertain the information. All figures that are shown were correct at the time of printing.