



CHILTERN STREET, W1U
£1,595,000 LEASEHOLD

SPACIOUS PERIOD APARTMENT ON CHILTERN STREET

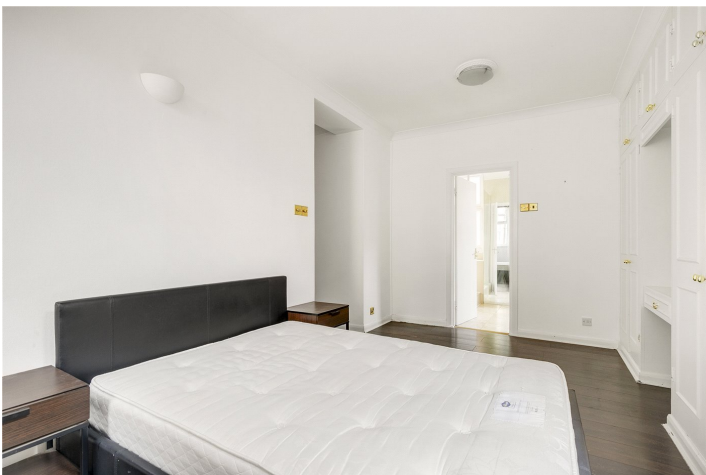
Knightsbridge & Chelsea | 0207 589 6616 | knightsbridge@winkworth.co.uk



DESCRIPTION:

This first-floor period apartment features three spacious bedrooms and combines character with modern living. Located in the heart of Marylebone, the property offers a bright and airy living space. The well-appointed kitchen provides a functional cooking area, while the three bedrooms offer ample space. With access to local amenities, transport links, and green spaces, the apartment balances convenience and tranquility. Contact us today to arrange a viewing.

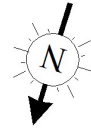




WENDOVER COURT, W1U

Approximate gross internal area

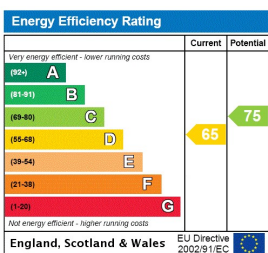
1081 sq ft / 100.42 sq m



FIRST FLOOR

Although every attempt has been made to ensure accuracy, all measurements are approximate.
This floorplan is for illustrative purposes only and not to scale.
Measured in accordance with RICS standards.

This floorplan is for illustration purposes only and is not to scale. The position and size of doors, windows, appliances and other features are approximate.



Tenure: Leasehold

Term: 127 year and 9 months

Service Charge: £4000 per annum

Ground Rent: £ 0 Annually (subject to increase)

Council Tax Band: F

Where no figures are shown, we have been unable to ascertain the information. All figures that are shown were correct at the time of printing.