



VANCOUVER ROAD, FOREST HILL, LONDON, SE23  
**£850,000 FREEHOLD**

Nestled on the highly sought-after Vancouver Road, this exceptional four-bedroom family home offers an enviable blend of space, style, and comfort.

Forest Hill | [foresthill@winkworth.co.uk](mailto:foresthill@winkworth.co.uk)  
[winkworth.co.uk](http://winkworth.co.uk)

**Winkworth**

for every step...

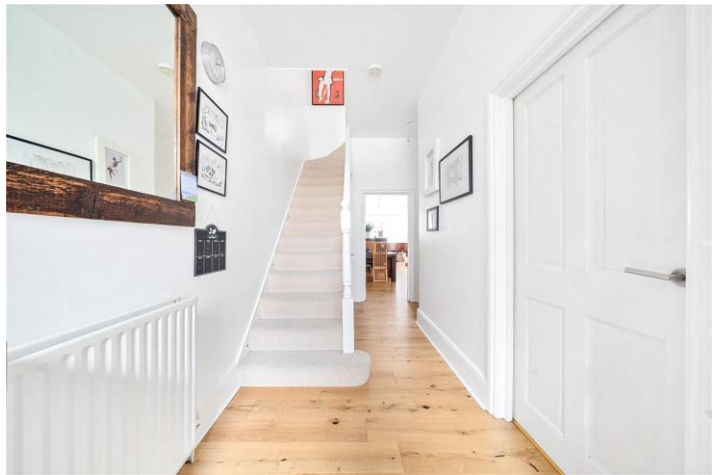


Nestled on the highly sought-after Vancouver Road, this exceptional four-bedroom family home offers an enviable blend of space, style, and comfort. Spanning an impressive 1,719 sq ft, the property is presented to the market chain-free, making it an ideal opportunity for those looking to move in with ease.

As you step inside, you're immediately greeted by a modern, fully fitted kitchen, perfect for family meals or entertaining guests. The heart of the home lies in the expansive 27ft double reception room, bathed in natural light, with a seamless flow into the stunning conservatory. This spacious extension opens up to a large, private rear garden — an ideal space for relaxation or family gatherings.



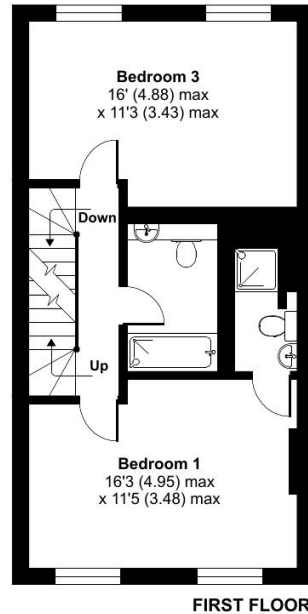
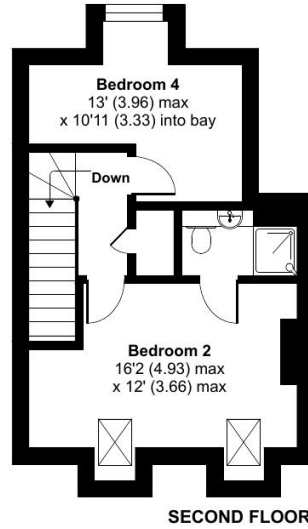
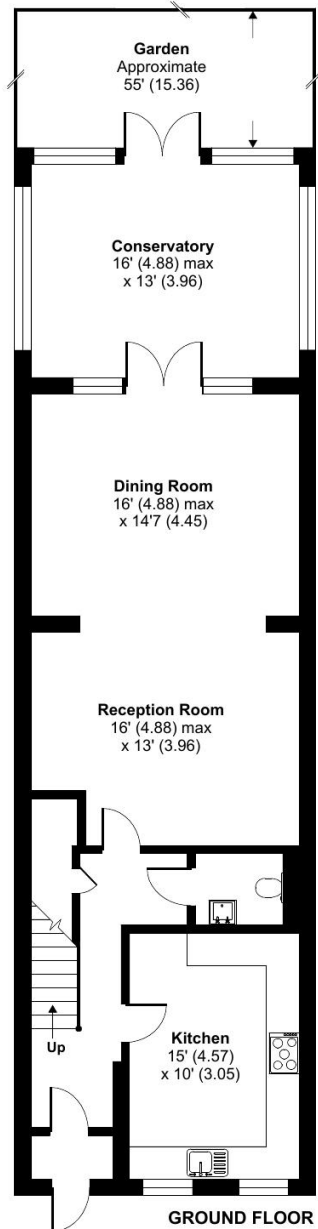
**Winkworth**



# Vancouver Road, London, SE23

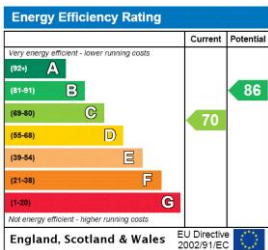
Approximate Area = 1925 sq ft / 178.8 sq m

For identification only - Not to scale



Floor plan produced in accordance with RICS Property Measurement Standards incorporating International Property Measurement Standards (IPMS2 Residential). © n3chem 2025. Produced for Winkworth Forest Hill and New Cross. REF: 1237821

This floorplan is for illustration purposes only and is not to scale. The position and size of doors, windows, appliances and other features are approximate.



**Tenure:** Freehold

**SERVICES:** Mains Electric, Gas, Drainage & Water.

**BROADBAND:** Ultrafast, & Standard Broadband Available. Checked on Openreach Jan 2025.

**HEATING:** Gas Central Heating

**Council Tax Band:** F **LOCAL AUTHORITY:** Lewisham

Where no figures are shown, we have been unable to ascertain the information. All figures that are shown were correct at the time of printing.

**Winkworth**

Forest Hill | | foresthill@winkworth.co.uk

for every step...

winkworth.co.uk

Winkworth wishes to inform prospective buyers and tenants that these particulars are a guide and act as information only. All our details are given in good faith and believed to be correct at the time of printing but they don't form part of an offer or contract. No Winkworth employee has authority to make or give any representation or warranty in relation to this property. All fixtures and fittings, whether fitted or not are deemed removable by the vendor unless stated otherwise and room sizes are measured between internal wall surfaces, including furnishings.