



AYCLIFFE ROAD, HERTFORDSHIRE, WD6

**£385,000 FREEHOLD**

## CHAIN FREE TWO BEDROOM TERRACED HOUSE

Borehamwood | 020 8953 8899 | borehamwood@winkworth.co.uk



### DESCRIPTION:

Charming 2-bedroom terraced house boasting a Kitchen, living room and conservatory to the ground floor which leads onto a private garden. Upstairs you have two bedrooms and a family bathroom. This accessible and affordable home offers a homely atmosphere. Conveniently located near amenities, this property is perfect for a small family or first-time buyers.

### AT A GLANCE

- 2 Bedrooms
- Entrance Hall
- Kitchen
- Reception Room
- Conservatory
- Bathroom





Approximate Gross Internal Area = 67.0 sq m / 721 sq ft

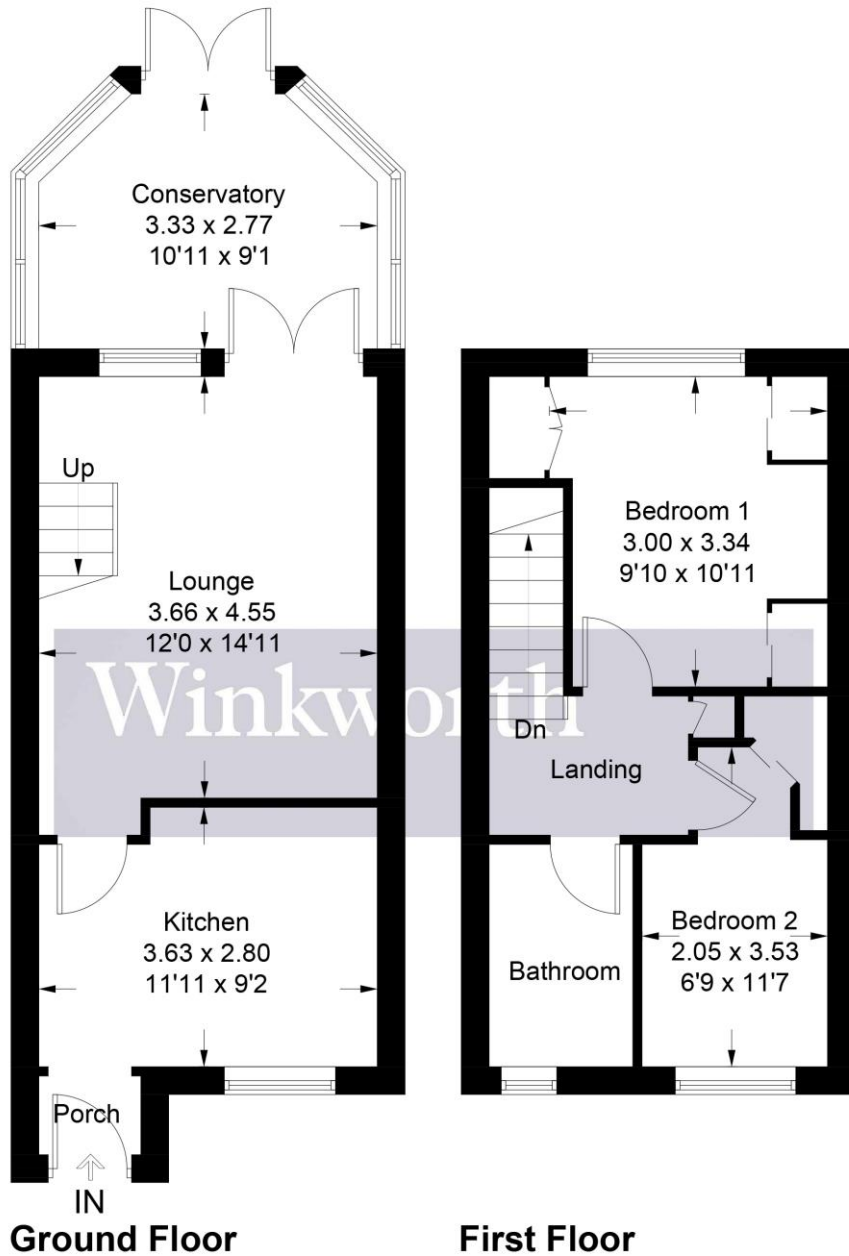


Illustration for identification purposes only, measurements are approximate, not to scale. Winkworth © 2025 (ID1157434)

This floorplan is for illustration purposes only and is not to scale. The position and size of doors, windows, appliances and other features are approximate.

Energy Efficiency Rating	
Current	Potential
Very energy efficient - lower running costs	
A (92-100)	84
B (81-91)	
C (69-80)	71
D (55-68)	
E (39-54)	
F (21-38)	G
G (1-20)	
Not energy efficient - higher running costs	
England, Scotland & Wales	
EU Directive 2002/91/EC	

**Tenure:** Freehold

**Term:** 0 year and 0 months

**Service Charge:** £0 per annum

**Ground Rent:** £ 0 Annually (subject to increase)

**Council Tax Band:** D

Where no figures are shown, we have been unable to ascertain the information. All figures that are shown were correct at the time of printing.