



**STAFFORD ROAD, MIDDLESEX, HA3**  
**£425,000 FREEHOLD**

## **CALLING ALL INVESTORS!**

**Tenure: Freehold**  
**Council Tax Band: D (London Borough of Harrow)**  
**EPC Rating: D**

Harrow | 020 8861 3933 | harrow@winkworth.co.uk

**Winkworth**

for every step...

*winkworth.co.uk*



### DESCRIPTION:

Nestled in the heart of a sought-after neighbourhood, this charming 3 bedroom BISF type semi-detached house offers a perfect blend of comfort and convenience. In need of modernisation, Stafford Road is the ideal project buy!

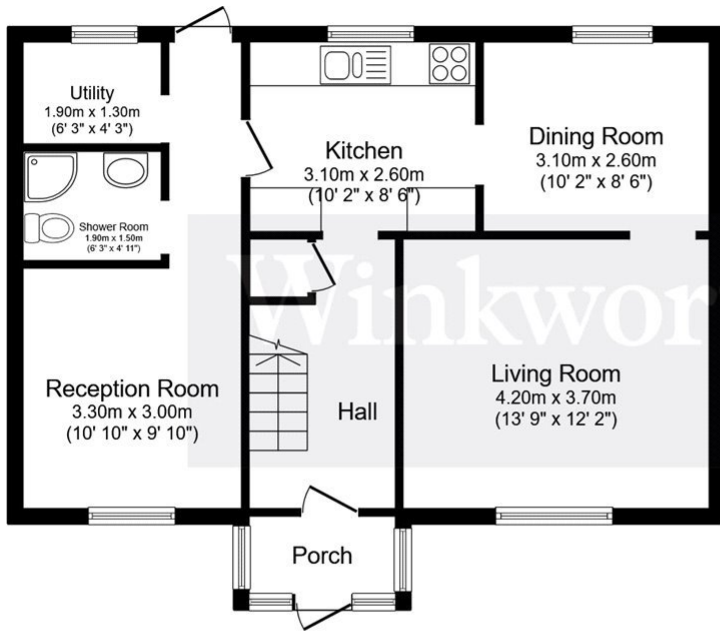
Boasting a floor area in excess of 1,108 sqft, Stafford Road boasts a bright and airy hallway, two generous reception rooms, kitchen and a garden, with scope for development and/or extension (STPP).

Situated in a sought-after location, this property benefits from excellent transport links, local amenities, and reputable schools within close proximity.

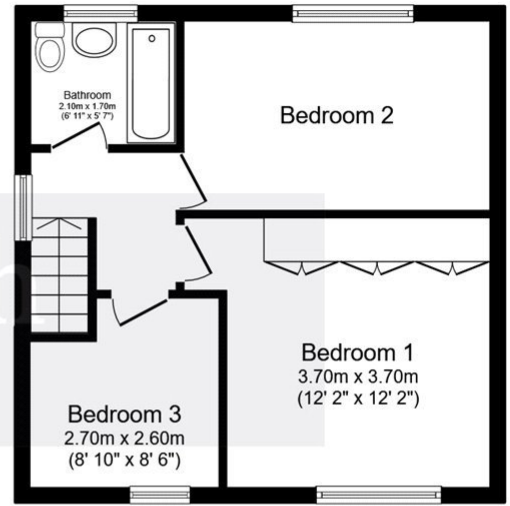
Whether you are a growing family seeking a comfortable home or a keen investor looking to expand your portfolio, this property offers an ideal opportunity to create lasting memories in a homely environment.







**Ground Floor**

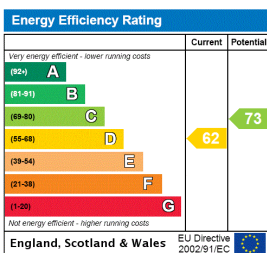


**First Floor**

Total floor area 102.9 m<sup>2</sup> (1,108 sq.ft.) approx

This floor plan is for illustrative purposes only. It is not drawn to scale. Any measurements, floor areas (including any total floor area), openings and orientation are approximate. No details are guaranteed, they cannot be relied upon for any purpose and they do not form part of any agreement. No liability is taken for any error, omission or misstatement. A party must rely upon its own inspection(s). Powered by [www.focalagent.com](http://www.focalagent.com)

This floorplan is for illustration purposes only and is not to scale. The position and size of doors, windows, appliances and other features are approximate.



Harrow | 020 8861 3933 | [harrow@winkworth.co.uk](mailto:harrow@winkworth.co.uk)

for every step...

[winkworth.co.uk](http://winkworth.co.uk)

Winkworth wishes to inform prospective buyers and tenants that these particulars are a guide and act as information only. All our details are given in good faith and believed to be correct at the time of printing but they don't form part of an offer or contract. No Winkworth employee has authority to make or give any representation or warranty in relation to this property. All fixtures and fittings, whether fitted or not are deemed removable by the vendor unless stated otherwise and room sizes are measured between internal wall surfaces, including furnishings.