



Durford Mill House, Petersfield, Hampshire, GU31

Guide Price: £2,350,000 Freehold

A detached mill house on the banks of The River Rother with approximately 3.5 acres of land and an indoor swimming pool.

Five bedrooms, family bathroom, family shower room, galleried landing, hall, drawing room, dining room, kitchen/breakfast room, snug, conservatory, double garage with a bedroom, kitchenette and shower room above, indoor pool, gardens and paddocks. In all, approximately 3.5 acres.

EPC Rating: N/A

Winkworth

for every step...

winkworth.co.uk/Petersfield 01730 267274



DESCRIPTION

The property is a detached, pretty, Grade II Listed mill house with stone and brick elevations under a tiled roof and accommodation over two floors. Believed to originally date from 1770, the property was extended in the 20th Century and now provides extensive accommodation for any incoming buyer. The layout of the property can be seen in the floorplan but of particular note are the large, almost floor to ceiling windows in many of the rooms ensuring light flows through the accommodation and many of the rooms radiate out from a central hall with galleried landing. Outside, the house is approached by a gravel drive with ample parking, to the right of which is a detached double garage with a small annexe above and there's a detached indoor swimming pool. The gardens are a particular feature of the house and are predominantly laid to lawn with an abundance of mature borders, trees, hedging and there's a paddock. Being on the banks of The River Rother, the gardens are an ideal, tranquil spot to unwind during the summer months.



LOCATION

The property is situated in the hamlet of Durford Mill, down a no-through lane, in the parish of Harting between Petersfield and Rogate. Petersfield lies 3 miles to the west and offers a variety of amenities in a bustling town centre. Shops include Tesco, Waitrose, M&S Food, and there are numerous boutiques, cafes and further shops. The train station provides a direct service to London Waterloo to the north (in approximately an hour) and Portsmouth to the south. The tunnel at Hindhead provides congestion free travel north along the A3 to Guildford and London. The town has many active clubs and societies with golf available at Petersfield and Liphook, horse and motor racing at Goodwood, polo at Cowdray Park and sailing along the South Coast. There are many popular schools in the area including Bedales, Churcher's College, Ditcham Park and The Petersfield School.

Services: Mains electricity and water. Oil fired central heating and private drainage.

LOCAL AUTHORITY

Chichester District Council

DIRECTIONS

From Petersfield town centre, proceed up Ramshill, passing Churcher's College on the right. At the roundabout, take the second exit signposted to Midhurst. Continue straight on, passing the Half Moon Public House on the left. As the road climbs, turn right towards Midhurst along the A272. Follow the road for approximately 1.2 miles and then turn right signposted to Durford Mill. Proceed along the lane, taking the first turning on the right, again signed to Durford Mill shortly after crossing a small bridge and follow the lane around to the right. The property is situated straight ahead of you.

Ref: AB/240086/1.



Petersfield, GU31

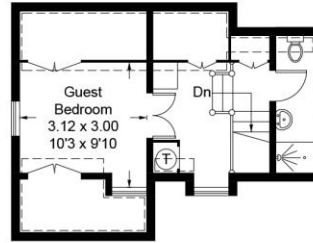
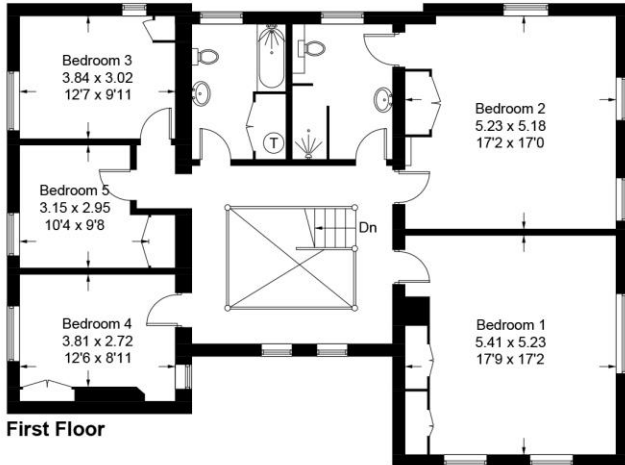
Approximate Gross Internal Area = 282.4 sq m / 3040 sq ft

Annexe = 69.8 sq m / 751 sq ft

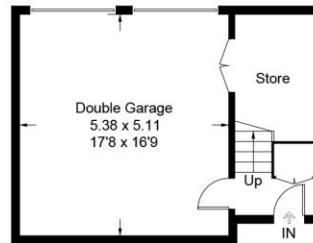
(Including Double Garage)

Outbuilding = 83.8 sq m / 902 sq ft

Total = 436 sq m / 4693 sq ft

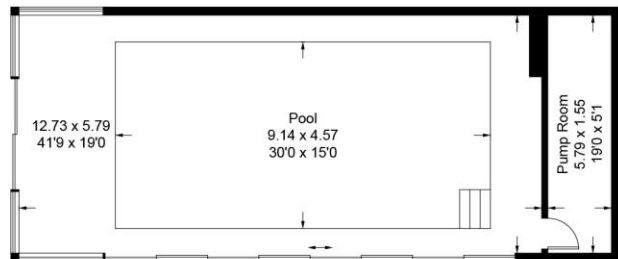
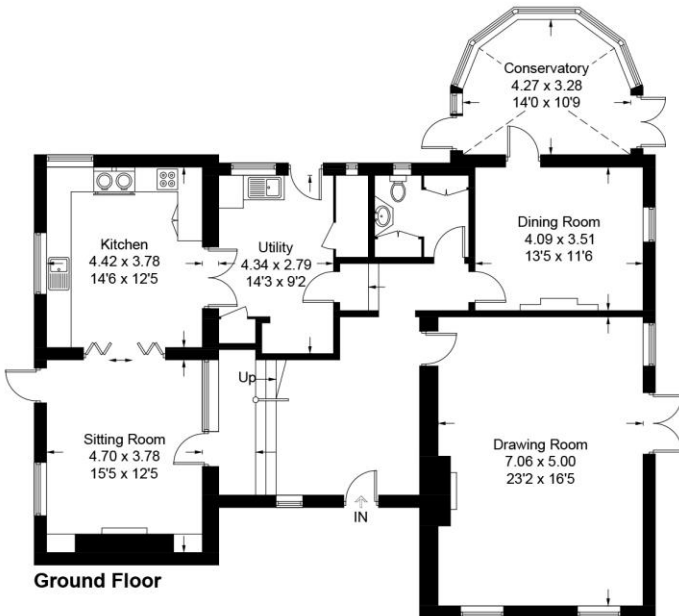


Annexe - First Floor



Annexe - Ground Floor

(Not Shown In Actual Location / Orientation)



(Not Shown In Actual Location / Orientation)

PRODUCED FOR WINKWORTH ESTATE AGENTS.

Whilst every attempt has been made to ensure the accuracy of the floorplan, measurements of doors, windows and rooms are approximate. These plans are for representation purposes only as defined by RICS Code of Measuring Practice and used as such by any prospective purchaser. Created by Emzo Marketing 2024.

Under the Consumer Protection from Unfair Trading Regulations 2008 (CPR), these Particulars are a guide and act as information only. All details are given in good faith and are believed to be correct at time of printing. Winkworth give no representation as to their accuracy and potential purchasers or tenants must satisfy themselves by inspection or otherwise as to their correctness. No employee of Winkworth has authority to make or give any representation or warranty in relation to this property.