

FOLK HOUSE, READING, BERKSHIRE, RG1 2SB
£1,295 PER MONTH UNFURNISHED

SPLIT LEVEL UNFURNISHED ONE BEDROOM APARTMENT IN READING TOWN CENTRE

Reading | 0118 4022 300 | reading@winkworth.co.uk

Winkworth

for every step...

winkworth.co.uk

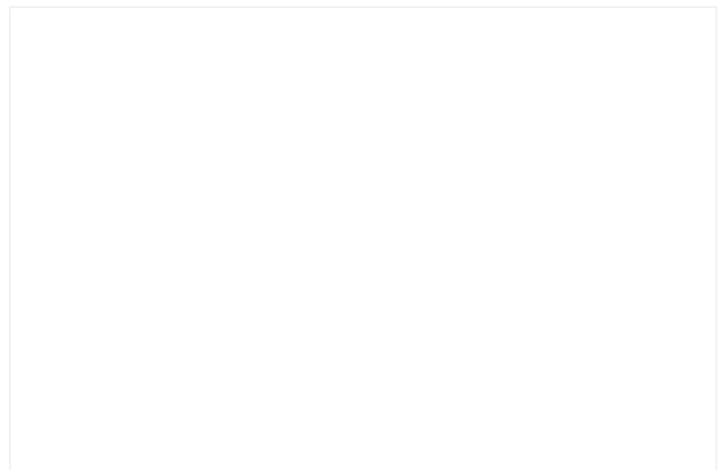


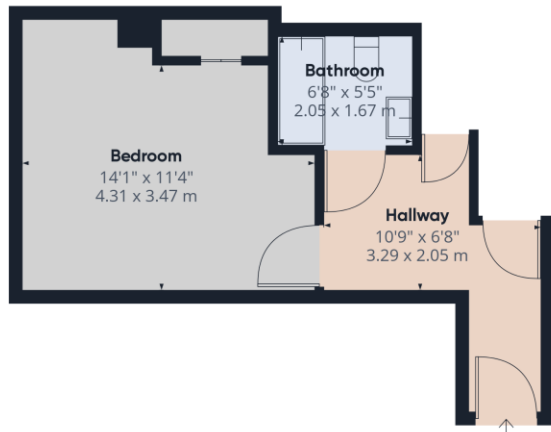
DESCRIPTION:

Split level one bedroom apartment located close to the town centre just off of London Street. The property comprises a large double bedroom with velux windows, three piece bathroom and large storage cupboard on the ground floor and to the first floor there is a spacious open plan living room/kitchen. Allocated off road parking space included. Available 17th March 2025. Unfurnished.

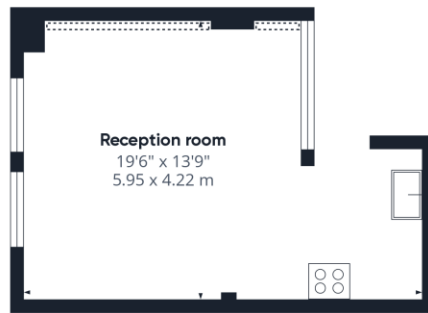
AT A GLANCE

- One bedroom apartment
- Town centre location
- Split level
- Council tax band C
- Allocated parking space
- Available 17th March
- Unfurnished





Ground Floor



Floor 1

Approximate total area⁽¹⁾
301.55 ft²
28.01 m²

(1) Excluding balconies and terraces

While every attempt has been made to ensure accuracy, all measurements are approximate, not to scale. This floor plan is for illustrative purposes only.

GIRAFFE360

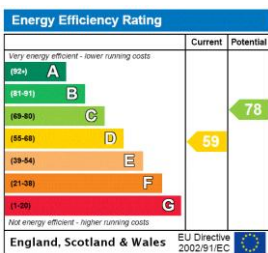
This floorplan is for illustration purposes only and is not to scale. The position and size of doors, windows, appliances and other features are approximate.

Deposit: £1,494.23

Holding Deposit: £298.84

Council Tax Band: C

Where no figures are shown, we have been unable to ascertain the information. All figures that are shown were correct at the time of printing.



Reading | 0118 4022 300 | reading@winkworth.co.uk

Winkworth

for every step...

winkworth.co.uk

Winkworth wishes to inform prospective buyers and tenants that these particulars are a guide and act as information only. All our details are given in good faith and believed to be correct at the time of printing but they don't form part of an offer or contract. No Winkworth employee has authority to make or give any representation or warranty in relation to this property. All fixtures and fittings, whether fitted or not are deemed removable by the vendor unless stated otherwise and room sizes are measured between internal wall surfaces, including furnishings.