



EATON CLOSE, MIDDLESEX, HA7
£625,000 FREEHOLD

FAMILY HOME FOR SALE

Tenure: Freehold
Council Tax Band: D
EPC Rating: D

Harrow | 020 8861 3933 | harrow@winkworth.co.uk



DESCRIPTION:

Winkworth Harrow are proud to present to the Sales Market, this gem of a family home.

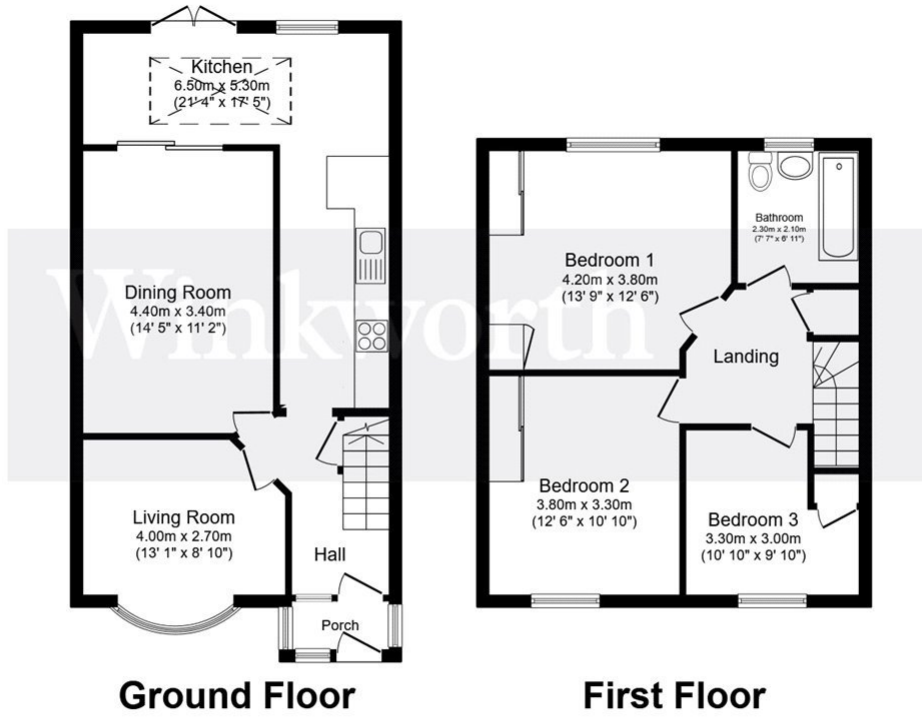
This charming three bedroom terraced house boasts bright, light-filled interiors and neutral hues, displaying a sense of modernity and serenity. The well-proportioned rooms offer ample space for both relaxation and entertainment. The kitchen is thoughtfully designed, featuring modern appliances and plenty of storage options.

Situated in a sought-after location, this property benefits from excellent transport links, local amenities, and reputable schools within close proximity.

Whether you are a growing family seeking a comfortable home or a keen investor looking to expand your portfolio, this property offers an ideal opportunity to create lasting memories in a homely environment.







Total floor area 103.3 m² (1,112 sq.ft.) approx

This floor plan is for illustrative purposes only. It is not drawn to scale. Any measurements, floor areas (including any total floor area), openings and orientation are approximate. No details are guaranteed, they cannot be relied upon for any purpose and they do not form part of any agreement. No liability is taken for any error, omission or misstatement. A party must rely upon its own inspection(s). Powered by www.focalagent.com

This floorplan is for illustration purposes only and is not to scale. The position and size of doors, windows, appliances and other features are approximate.

