



**FARRINGTON ROAD, CLERKENWELL, LONDON, EC1M
£500,000 LEASEHOLD APPROX. 119 YEARS REMAINING**

Winkworth



FARRINGTON ROAD, CLERKENWELL, LONDON, EC1M

Presented in excellent conditions comes this large one bedroom apartment.

Presented in excellent conditions comes this large one bedroom apartment.

Comprising of a modern kitchen complete with all appliances, a large and bright reception room, a double bedroom and a fully tiled bathroom.

The apartment is located only minutes from Farringdon Station as well as the Leather Lane, Exmouth Market and is within easy access to the City and the West End.

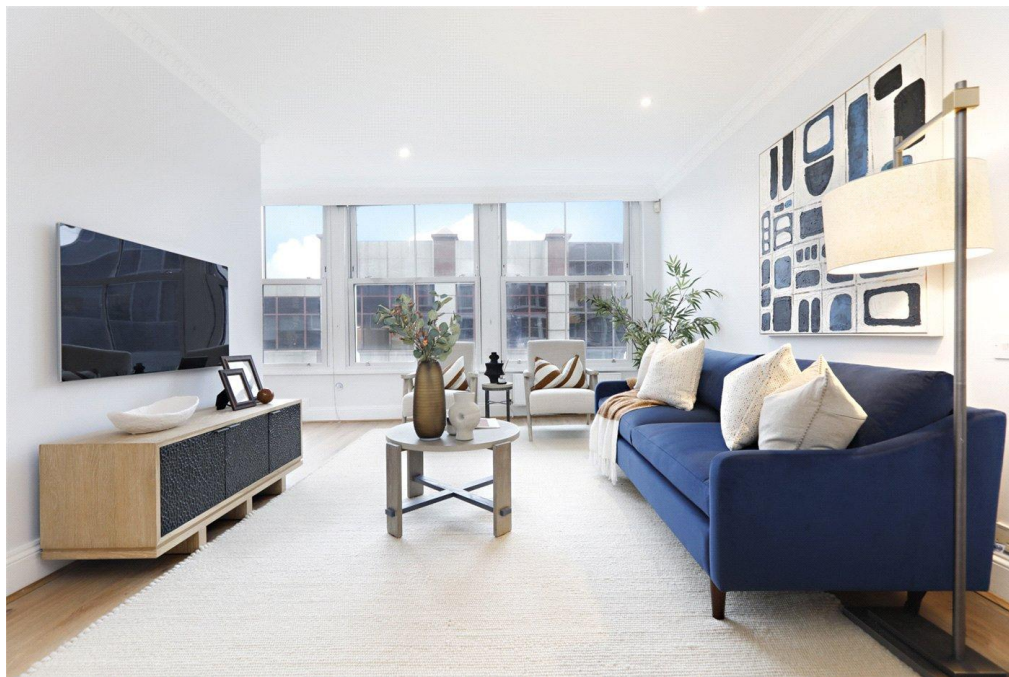
Leasehold: Approx. 119 years remaining

Service Charge: Approx. £2,000 p/a

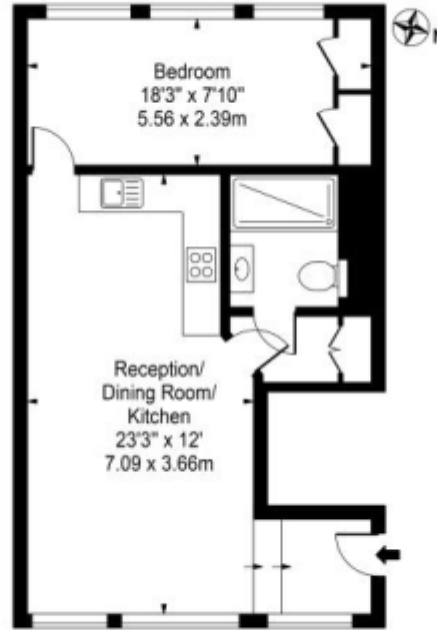
Ground Rent: Approx. £200 p/a

Council Tax: Band D





Farringdon Road
 Approx. Gross Internal Area 517 Sq Ft - 48.03 Sq M



Second Floor
 For Illustration Purposes Only - Not To Scale

This floor plan should be used as a general guide for guidance only and does not constitute in whole or in part an offer or contract. Any intending purchaser or lessee should verify themselves by inspection, searches, enquiries and full survey as to the correctness of each statement. Any areas, measurements or distances quoted are approximate and should not be used to value a property or be the basis of any sale or let.

Energy Efficiency Rating		Current	Potential
Very energy efficient - lower running costs			
(92-100) A			
(81-91) B			
(69-80) C		78	81
(55-68) D			
(39-54) E			
(21-38) F			
(1-20) G			
Not energy efficient - higher running costs			
England, Scotland & Wales		EU Directive 2002/91/EC	

Clerkenwell & City | 020 7405 1288 | clerkenwell@winkworth.co.uk

winkworth.co.uk

Winkworth wishes to inform prospective buyers and tenants that these particulars are a guide and act as information only. All our details are given in good faith and believed to be correct at the time of printing but they don't form part of an offer or contract. No Winkworth employee has authority to make or give any representation or warranty in relation to this property. All fixtures and fittings, whether fitted or not are deemed removable by the vendor unless stated otherwise and room sizes are measured between internal wall surfaces, including furnishings.

