



FLAT 15, LINCOLN HOUSE, BASIL STREET, LONDON, SW3
£2,950,000 SHARE OF FREEHOLD

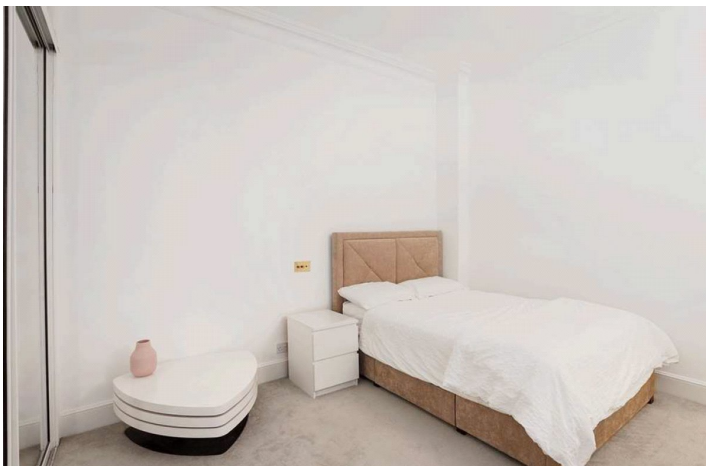
ELEGANT LIVING IN THE HEART OF KNIGHTSBRIDGE – MOMENTS FROM HARRODS

Knightsbridge & Chelsea | 0207 589 6616 | knightsbridge@winkworth.co.uk



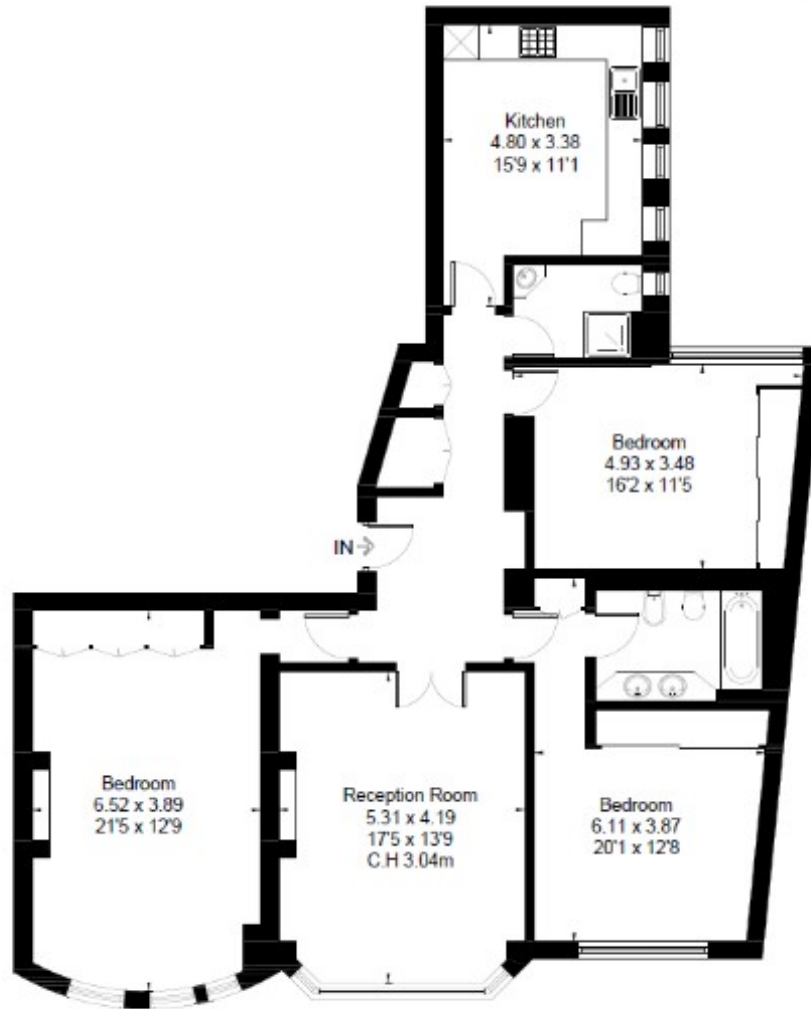
DESCRIPTION:

This elegant three-bedroom apartment is situated on the first floor of Lincoln House, one of Knightsbridge's most prestigious portered buildings. Nestled on Basil Street, just moments from Harrods and the vibrant amenities of central London, the property offers an exceptional blend of style and convenience. The spacious reception room is flooded with natural light from large windows and boasts impressively high ceilings, enhancing its airy ambiance. Residents benefit from 24-hour portering, ensuring both security and comfort. With its prime location, sophisticated interiors, and outstanding services, this apartment presents a rare opportunity to experience the finest of Knightsbridge living.





BASIL STREET, SW3
 Approximate Floor Area = 124.2 sq m / 1337 sq ft



First Floor

This floorplan is for illustration purposes only and is not to scale. The position and size of doors, windows, appliances and other features are approximate.

Energy Efficiency Rating	
	Potential
Very energy efficient - lower running costs	
(92+) A	
(81-91) B	
(69-80) C	
(55-68) D	
(39-54) E	
(21-38) F	
(1-20) G	
Not energy efficient - higher running costs	
Current	Potential
71	82

England, Scotland & Wales EU Directive 2002/91/EC

Tenure: Share of Freehold

Term: Expires

Service Charge: £16,640 per annum

Ground Rent: £ 0 Annually (subject to increase)

Council Tax Band:

Where no figures are shown, we have been unable to ascertain the information. All figures that are shown were correct at the time of printing.