



STREATHAM HIGH ROAD, SW16  
**£1,500 PER MONTH UNFURNISHED**

## A TWO BEDROOM FLAT LOCATED IN THE HEART OF STREATHAM HILL

Streatham | 020 8769 6699 | [streatham@winkworth.co.uk](mailto:streatham@winkworth.co.uk)

**Winkworth**

for every step...

[winkworth.co.uk](http://winkworth.co.uk)



## DESCRIPTION:

Available exclusively through Winkworth, we are delighted to offer to let this spacious two-bedroom first floor apartment. Built in the 1930's "Art Deco" period, The High is a well-maintained Streatham landmark apartment block stretching west from the corner of Leigham Avenue along Streatham High Road towards Gracefield Gardens. In this first floor apartment, there is a good size, bright reception and dining room with wooden flooring, fitted storage and an original fireplace. There is a separate fitted kitchen with all the usual appliances and plenty of cabinet storage space. The smart bathroom has a shower over the bath, a wash hand basin and a WC. The double bedrooms are generously proportioned, and one has fitted wardrobes too. Commuting into central London is easy from Streatham Hill station which runs a regular service to London Victoria, Streatham station has the Thameslink service into the City and Brixton tube is a short bus-ride away down the hill. Offering excellent living space in excess of 700 sq. ft. and set in a convenient location close to all local amenities, gyms, shops, bars, cafes and restaurants, this beautiful apartment is offered on an unfurnished basis and is available from the 6<sup>th</sup> of April 2024.

## AT A GLANCE

- Art Deco Mansion Block
- First Floor (with lift)
- Recently repainted throughout
- 718 sq. Ft.
- Two Double Bedrooms
- Modern Bathroom
- Fitted Kitchen
- Reception & Dining Room
- Unfurnished
- Available 6<sup>th</sup> of April 2024

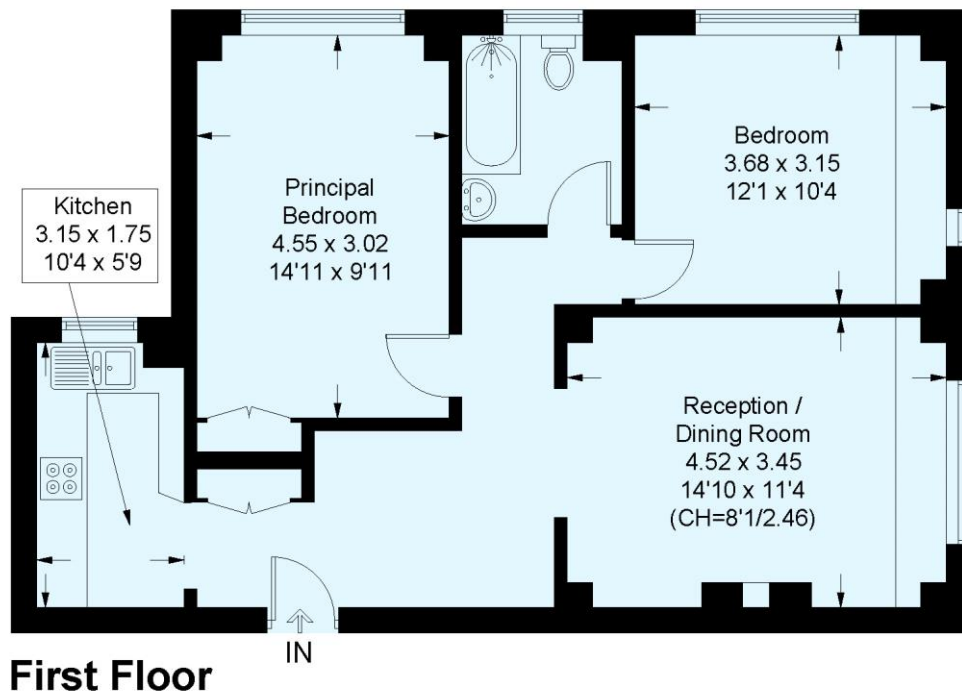






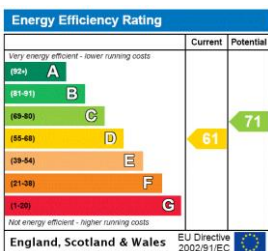
## The High, Streatham High Road

Approximate Floor Area = 66.7 sq m / 718 sq ft  
Including Limited Use Area (1.2 sq m / 13 sq ft)



This plan is for layout guidance only. Not drawn to scale unless stated. Windows and door openings are approximate. Whilst every care is taken in the preparation of this plan, please check all dimensions, shapes and compass bearings before making any decisions reliant upon them. (ID720806)

This floorplan is for illustration purposes only and is not to scale. The position and size of doors, windows, appliances and other features are approximate.



Streatham | 020 8769 6699 | streatham@winkworth.co.uk

**Winkworth**

for every step...

winkworth.co.uk

Winkworth wishes to inform prospective buyers and tenants that these particulars are a guide and act as information only. All our details are given in good faith and believed to be correct at the time of printing but they don't form part of an offer or contract. No Winkworth employee has authority to make or give any representation or warranty in relation to this property. All fixtures and fittings, whether fitted or not are deemed removable by the vendor unless stated otherwise and room sizes are measured between internal wall surfaces, including furnishings.