



ST. ALBANS AVENUE, W4
£699,950 LEASEHOLD

TWO DOUBLE BEDROOM VICTORIAN APARTMENT

Chiswick | 020 8994 7096 | chiswick@winkworth.co.uk



for every step...

winkworth.co.uk



DESCRIPTION:

A well-presented Victorian conversion apartment with two double bedrooms, a large front aspect lounge and large kitchen. Offered with no onward chain and low outgoings.

ACCOMMODATION

Leasehold
2 Bedrooms,
1 Reception Room,
1 Bathroom
First Floor,

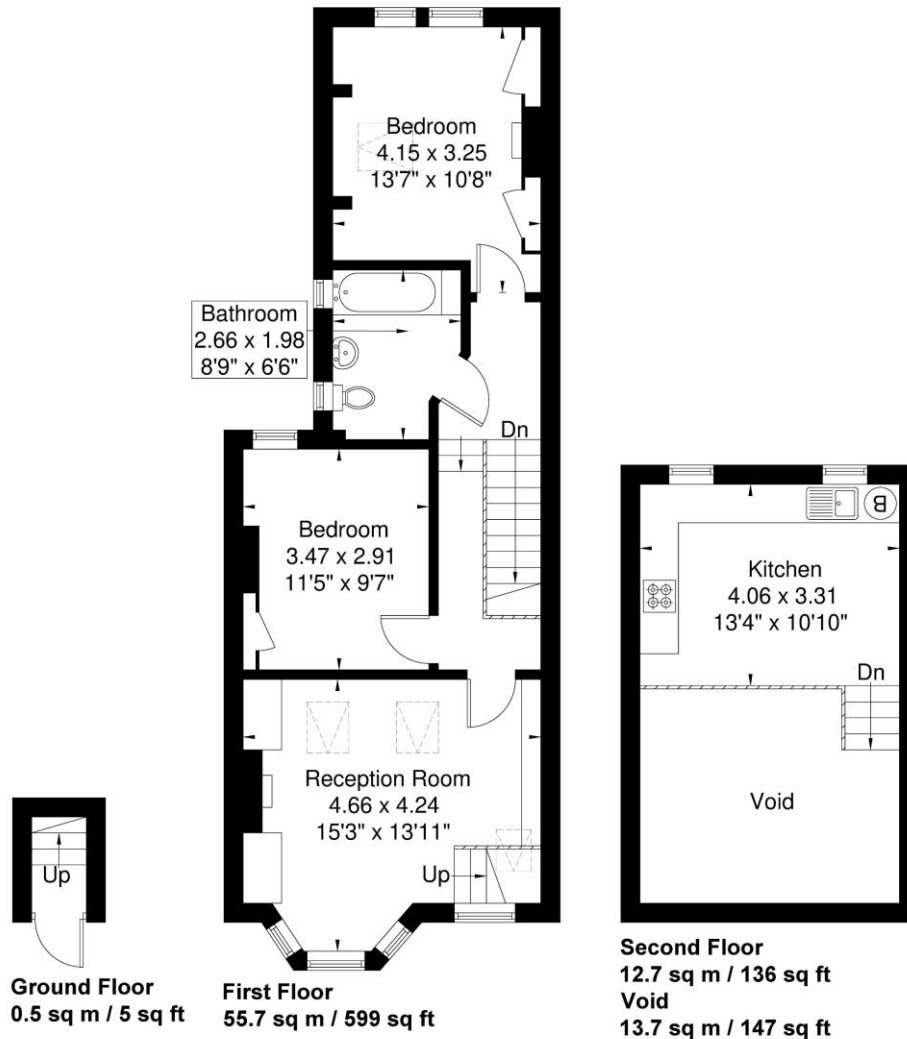


Saint Albans Avenue

Approximate Gross Internal Area = 68.9 sq m / 740 sq ft

Void = 13.7 sq m / 147 sq ft

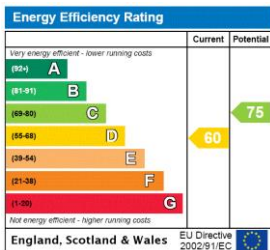
Total = 82.6 sq m / 887 sq ft



Winkworth

Although every attempt has been made to ensure accuracy, all measurements are approximate. The floorplan is for illustrative purposes only and not to scale.
© www.perspective.co.uk

This floorplan is for illustration purposes only and is not to scale. The position and size of doors, windows, appliances and other features are approximate.



Chiswick | 020 8994 7096 | chiswick@winkworth.co.uk

Winkworth

for every step...

winkworth.co.uk

Winkworth wishes to inform prospective buyers and tenants that these particulars are a guide and act as information only. All our details are given in good faith and believed to be correct at the time of printing but they don't form part of an offer or contract. No Winkworth employee has authority to make or give any representation or warranty in relation to this property. All fixtures and fittings, whether fitted or not are deemed removable by the vendor unless stated otherwise and room sizes are measured between internal wall surfaces, including furnishings.