



## Ifield Road, Earls Court, SW10

£425 per week – Furnished

A beautifully refurbished two bedroom flat located on the First Floor of this period property.

2 Bedrooms | 1 Reception Room | 1 Bathroom | First Floor Flat | 484 Approx sq ft | EPC: D

APPLICANT FEES MAY BE APPLICABLE

**Winkworth**

[winkworth.co.uk](https://www.winkworth.co.uk)

See things differently



## DESCRIPTION

This stylish flat offers two good sized double bedrooms, both with built-in wardrobes, a contemporary bathroom and modern open-plan kitchen/reception room.

The property is located a short walk from West Brompton and Earls Court stations and is well located for all the amenities of West Chelsea and Earls Court. The flat is available immediately on a furnished basis.

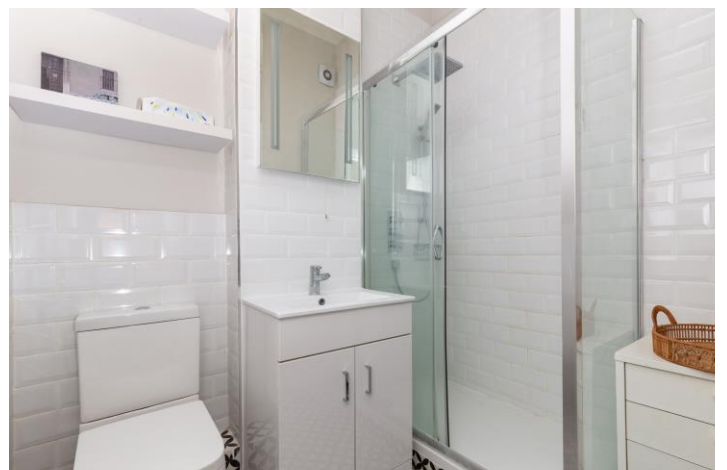


## ACCOMMODATION

2 Bedrooms, 1 Reception Room,  
1 Bathroom, First Floor Flat, Furnished,  
484 Approx Sq ft

## COUNCIL TAX BAND

Band E

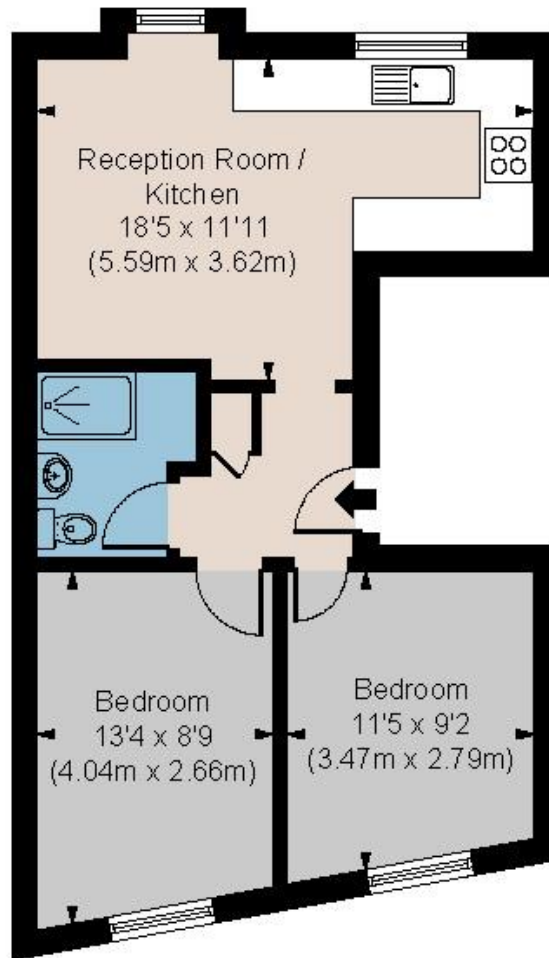


# IFIELD ROAD SW10

APPROX. GROSS INTERNAL AREA \*  
484 Ft<sup>2</sup> - 45.00 M<sup>2</sup>

Illustration For Identification Only, Not to Scale  
All Calculations include Any/All Areas Under 1.5m Head Height.

\* As Defined by RICS - Code of Measuring Practice



FIRST FLOOR

Floorplan is for illustration purposes only and is not to scale. Every attempt has been made to ensure the accuracy of the floorplan shown, however all measurements, fixtures, fittings and data shown are an approximate interpretation for illustrative purposes only. Liability for errors, omissions or mis-statement through negligence or otherwise is hereby excluded.



Energy Efficiency Rating		Current	Potential
Very energy efficient - lower running costs			
(92+)	A		
(81-91)	B		
(69-80)	C		
(55-68)	D	65	74
(39-54)	E		
(21-38)	F		
(1-20)	G		
Not energy efficient - higher running costs			
England, Scotland & Wales		EU Directive 2002/91/EC	

This floorplan is for illustration purposes only and is not to scale. The position and size of doors, windows, appliances and other features are approximate.



South Kensington Lettings | 020 7370 6767 | lettings.southken@winkworth.co.uk

winkworth.co.uk

See things differently

Winkworth wishes to inform prospective buyers and tenants that these particulars are a guide and act as information only. All our details are given in good faith and believed to be correct at the time of printing but they don't form part of an offer or contract. No Winkworth employee has authority to make or give any representation or warranty in relation to this property. All fixtures and fittings, whether fitted or not are deemed removable by the vendor unless stated otherwise and room sizes are measured between internal wall surfaces, including furnishings.