



5, Kingsley Mews

London, W8 5PY

A charming two double bedroom mews house with dual aspect.

This fantastic house is located on Kingsley Mews and consists of a large open-plan kitchen / reception upon entering. On the first floor you have two double bedrooms, one with built-in wardrobes and family bathroom off the hallway. Heading up to the second floor you have a landing and door to access the flat roof.

This property is ready to move into and is being sold chain free.

Kingsley Mews is a most desirable mews tucked away in a quiet corner of Kensington. Located at the southern end of Stanford Road and behind Cornwall Gardens quiet and achingly picturesque, this cobbled mews is close to all the cafes, bars, restaurants and transport facilities of Gloucester Road and South Kensington.

Asking Price: £1,195,000 Subject to Contract

Tenure: Freehold

Local Authority: The Royal Borough of Kensington & Chelsea

Council tax band: Band G



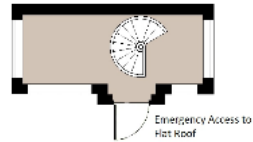


Freehold | Two Double Bedrooms | Dual aspect | Prime Location

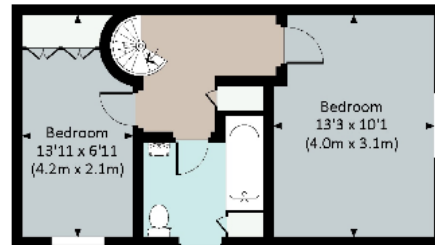
| Energy Efficiency Rating | | |
|---|-------------------------|-----------|
| | Current | Potential |
| Very energy efficient - lower running costs | | |
| (92+) A | | |
| (81-91) B | | 86 |
| (69-80) C | | |
| (55-68) D | 62 | |
| (39-54) E | | |
| (21-38) F | | |
| (1-20) G | | |
| Not energy efficient - higher running costs | | |
| England, Scotland & Wales | EU Directive 2002/91/EC | |

KINGSLEY MEWS, W8

Approx. gross internal area
755 Sq Ft. / 70.1 Sq M.



SECOND FLOOR



FIRST FLOOR



GROUND FLOOR

All measurements have been made in accordance with RICS Code of Measuring Practice which are approximate only and only for illustrative purposes. For the purposes of detail, please refer to the original floor plan. For further information on this measurement, please contact 020 7373 5052.



South Kensington Sales | 020 7373 5052

southkensington@winkworth.co.uk