



58C, HUNTINGDON STREET, LONDON, LONDON, N1  
**£665,000 SHARE OF FREEHOLD**

**A CHARMING TWO BEDROOM FLAT ARRANGED OVER THE  
 FIRST FLOOR OF AN ATTRACTIVE EARLY VICTORIAN  
 TERRACED HOUSE ON THIS POPULAR TREE LINED STREET  
 IN BARNSBURY CONSERVATION AREA**

Islington | 0207 354 2480 | [islington@winkworth.co.uk](mailto:islington@winkworth.co.uk)

**Winkworth**

[winkworth.co.uk](http://winkworth.co.uk)

See things differently





## DESCRIPTION:

A bright, 536 sq. ft., two bedrooms, one bathroom flat arranged over the first floor of this beautiful period conversion in the heart of Barnsbury and close to Thornhill Square. The property comprises of two bedrooms that lead a south facing balcony overlooking Huntingdon Street that floods the property with natural light, a three-piece bathroom with bathtub, and a semi- open plan kitchen/ living room with built in units and a range of fitted appliances overlooking the back garden.

Located in the sophisticated Barnsbury Conservation Area, the property is in the middle of Huntingdon Street named in 1850's after the county of Huntingdon for which George Thornhill (1811-75) was MP Part of the Thornhill Estate, Barnsbury. The property is conveniently located for easy access to both the City and the West End and the many bars, restaurants, and shops that the Upper Street has to offer. The closest underground transport links can be found at Highbury and Islington (Victoria Line) that is 0.6 miles away. The Caledonian Road Underground (Piccadilly Line) also within easy reach at 0.5-mile distance. International transport is facilitated 1 mile away from Kings Cross St Pancras International station.

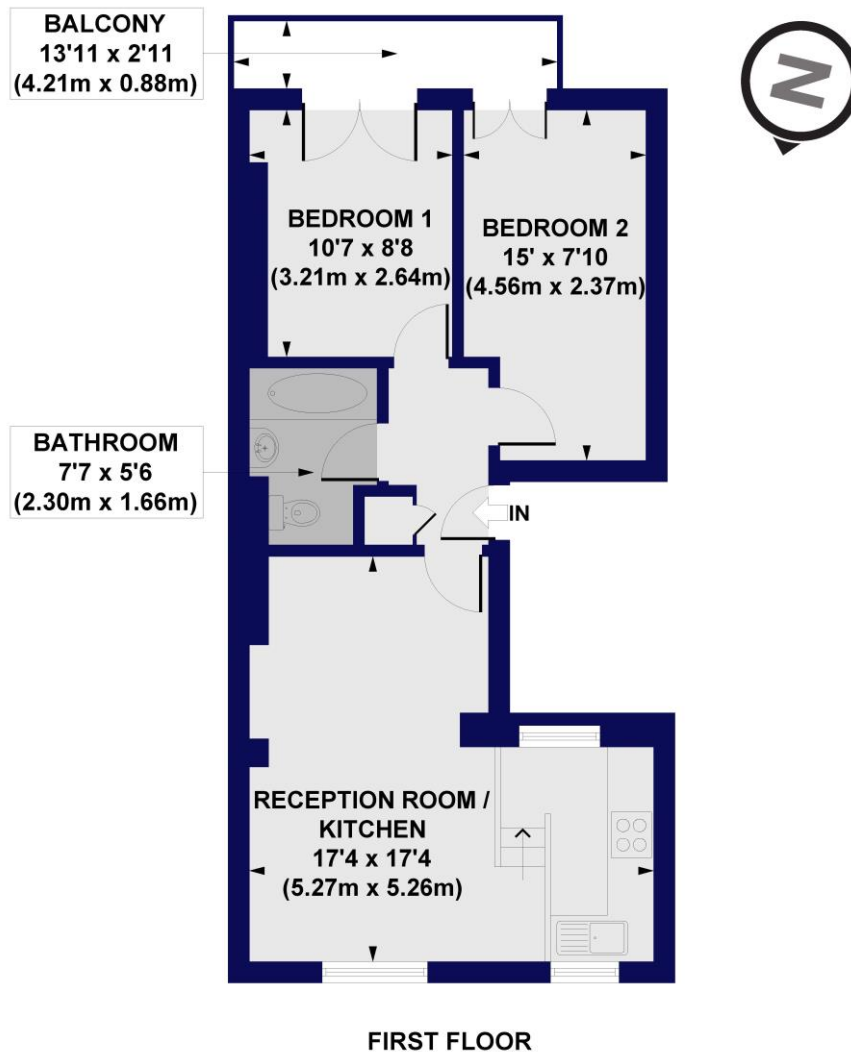
**Winkworth**





Winkworth

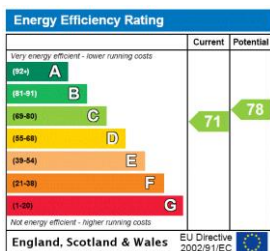
**Huntingdon Street, N1**  
**Approx. Gross Internal Floor Area 536 sq. ft / 49.81 sq. m (Excluding Balcony)**



All measurements of walls, doors, windows, fittings and appliances, including their size and location, are shown as standard sizes and do not constitute any warranty or representation by the seller, their agent or CP Creative. Any intending purchaser must satisfy himself by inspection or otherwise as to the correctness of the information contained in these plans. This plan is for illustrative purposes only and should be used as such by any prospective purchasers.

**Winkworth**

This floorplan is for illustration purposes only and is not to scale. The position and size of doors, windows, appliances and other features are approximate.



Islington | 0207 354 2480 | [islington@winkworth.co.uk](mailto:islington@winkworth.co.uk)

**Winkworth**

[winkworth.co.uk](http://winkworth.co.uk)

See things differently

Winkworth wishes to inform prospective buyers and tenants that these particulars are a guide and act as information only. All our details are given in good faith and believed to be correct at the time of printing but they don't form part of an offer or contract. No Winkworth employee has authority to make or give any representation or warranty in relation to this property. All fixtures and fittings, whether fitted or not are deemed removable by the vendor unless stated otherwise and room sizes are measured between internal wall surfaces, including furnishings.