

ROE LANE, KINGSBURY, LONDON, NW9

£600,000 FREEHOLD

CHARMING TWO-BEDROOM COTTAGE IN ROE GREEN VILLAGE – CHAIN FREE

Kingsbury | 020 8204 0000 | kingsbury@winkworth.co.uk

Winkworth

for every step...

winkworth.co.uk



DESCRIPTION: Nestled in the heart of the picturesque and close-knit Roe Green Village, this beautifully refurbished two-bedroom cottage blends character with modern comfort. The fitted kitchen is well-appointed, catering to all your culinary needs, while the modern family bathroom adds a touch of style and functionality. Offering a warm and inviting atmosphere, this home is ideal for first-time buyers looking to settle into a welcoming community while enjoying excellent transport links and local amenities. The property boasts a gorgeous rear garden, perfect for relaxing or entertaining, and is offered chain free for a smooth and hassle-free move. With its charming cottage-style appeal and village setting, this is a rare opportunity not to be missed. Enquire today to arrange a viewing!



for every step...



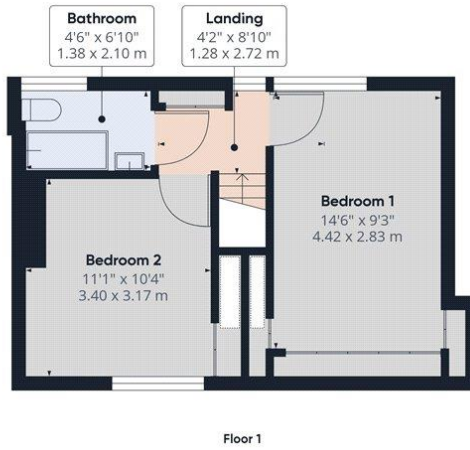
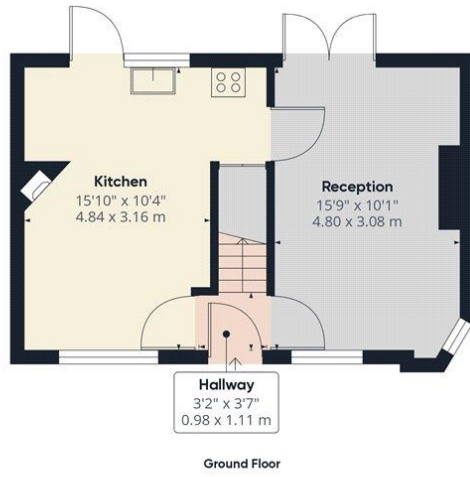
Winkworth
for every step...



Winkworth
for every step...

Winkworth

for every step...



Approximate total area⁽¹⁾
705.68 ft²
65.56 m²

(1) Excluding balconies and terraces

While every attempt has been made to ensure accuracy, all measurements are approximate, not to scale. This floor plan is for illustrative purposes only.
Calculations are based on RICS IPMS 3C standard.

GIRAFFE360

This floorplan is for illustration purposes only and is not to scale. The position and size of doors, windows, appliances and other features are approximate.

Tenure: Freehold

Council Tax Band: D - Brent

Where no figures are shown, we have been unable to ascertain the information. All figures that are shown were correct at the time of printing.

