



FLAT 18, HOGARTH COURT, FOUNTAIN DRIVE, LONDON, SE19
£1,250 PER MONTH

**A SUPERB ONE BEDROOM SECOND FLOOR FLAT
AVAILABLE TO LET.**

Crystal Palace | 02038693222 | crystalpalace@winkworth.co.uk

Tenant Fees Apply: Details of fees for tenant referencing, tenancy agreement admin fees and renewal fees are available on the Winkworth website and the link can be found with the displayed rent for the property. Tenants should ensure they are fully conversant with these upfront fees and other costs that are involved at the outset of the tenancy before making an offer to rent and your local Winkworth office will provide written details upon request.

winkworth.co.uk

Winkworth

for every step...



DESCRIPTION:

Located on the highly desirable Hogarth Court, just off Fountain Drive, we are delighted to offer to the market this 491 Sq Ft second floor one bedroom flat.

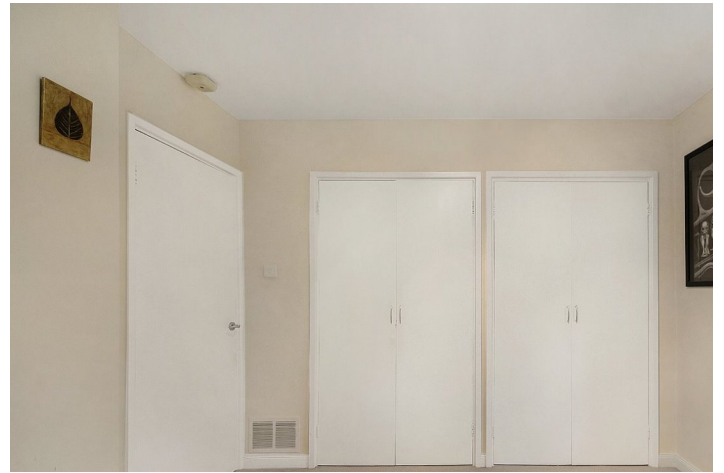
The accommodation comprises; open-plan kitchen/diner, bathroom and a double bedroom. The property is offered part furnished and benefits from beautifully maintained communal grounds.

The transport links of Sydenham Hill are within easy reach offering fast links to Victoria and Blackfriars. It is also within walkable distance to the bars, restaurants, shops and cinema of Crystal Palace Triangle.

Council Tax band C.

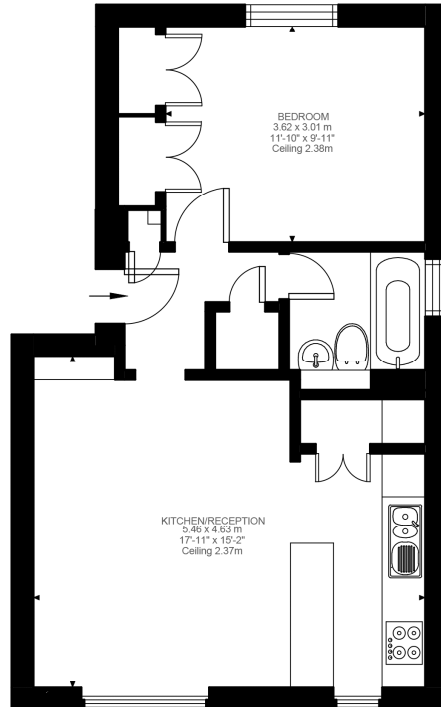
Winkworth

for every step...



Winkworth

for every step...



Second Floor
491 ft²

Fountain Drive, SE19
Approximate Gross Internal Area
45.65 SQ.M / 491 SQ.FT

Illustration for identification purposes only. Not to scale.
Floor Plan Drawn According To RICS Guidelines.

This floorplan is for illustration purposes only and is not to scale. The position and size of doors, windows, appliances and other features are approximate.

Crystal Palace | 02038693222 | crystalpalace@winkworth.co.uk

Winkworth

for every step...

winkworth.co.uk

Winkworth wishes to inform prospective buyers and tenants that these particulars are a guide and act as information only. All our details are given in good faith and believed to be correct at the time of printing but they don't form part of an offer or contract. No Winkworth employee has authority to make or give any representation or warranty in relation to this property. All fixtures and fittings, whether fitted or not are deemed removable by the vendor unless stated otherwise and room sizes are measured between internal wall surfaces, including furnishings.