



GREAT PERCY STREET, LONDON, WC1X
£550,000 SHARE OF FREEHOLD

**AN EXCEPTIONALLY CHARMING ONE BEDROOM FLAT
WITH ITS OWN STREET ENTRANCE SET IN A REGENCY
TOWNHOUSE ON THE QUIET AND PICTURESQUE GREAT
PERCY STREET.**

Clerkenwell & City | 020 7405 1288 | clerkenwell@winkworth.co.uk

Winkworth

for every step...

winkworth.co.uk



DESCRIPTION:

The flat is nicely finished to a high standard throughout and has a comfortable well laid out feel. Internally it is about 550 sq. ft plus the vaults making close to 720 sq. ft in all. The under-pavement vaults are perfect for storage or a wine cellar. One of the vaults has been plumbed for use of a washer/dryer. With a share of the Freehold and low running costs this is a lovely buying opportunity. Great Percy Street, in the heart of the leafy 'Amwell Village' is within close proximity to numerous garden squares and attractive parks. Similarly, Kings Cross, Farringdon (Crossrail) and Angel Stations are close-by as well as numerous bus links to the city and the West End.



Winkworth

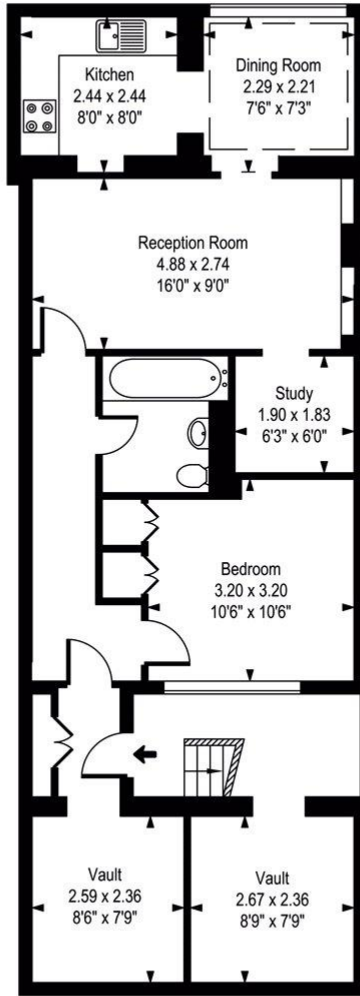
for every step...



Winkworth

for every step...

Great Percy Street



Lower Ground Floor

Approx Gross Internal Area 721 Sq Ft - 67 Sq M

Whilst every attempt has been made to ensure the accuracy of the floor plan contained here, measurements of the doors, windows, rooms and any other items are approximate and no responsibility is taken for any error, omission, or mis-statement. This plan is for illustrative purposes only and should be used as such by any prospective purchaser. The services, systems and appliances shown have not been tested and no guarantee as to their operability or efficiency can be given.

This floorplan is for illustration purposes only and is not to scale. The position and size of doors, windows, appliances and other features are approximate.

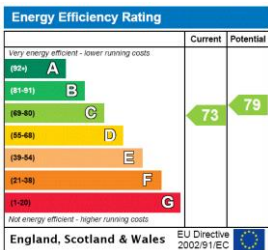
Tenure: Share of Freehold

Service Charge: Approx. £2,080 per annum

Ground Rent: NIL

Council Tax Band: D

Where no figures are shown, we have been unable to ascertain the information. All figures that are shown were correct at the time of printing.



Clerkenwell & City | 020 7405 1288 | clerkenwell@winkworth.co.uk

Winkworth

for every step...

winkworth.co.uk

Winkworth wishes to inform prospective buyers and tenants that these particulars are a guide and act as information only. All our details are given in good faith and believed to be correct at the time of printing but they don't form part of an offer or contract. No Winkworth employee has authority to make or give any representation or warranty in relation to this property. All fixtures and fittings, whether fitted or not are deemed removable by the vendor unless stated otherwise and room sizes are measured between internal wall surfaces, including furnishings.