



PALACE COURT, HARROW, MIDDLESEX, HA3
GUIDE PRICE £675,000 - £725,000 FREEHOLD

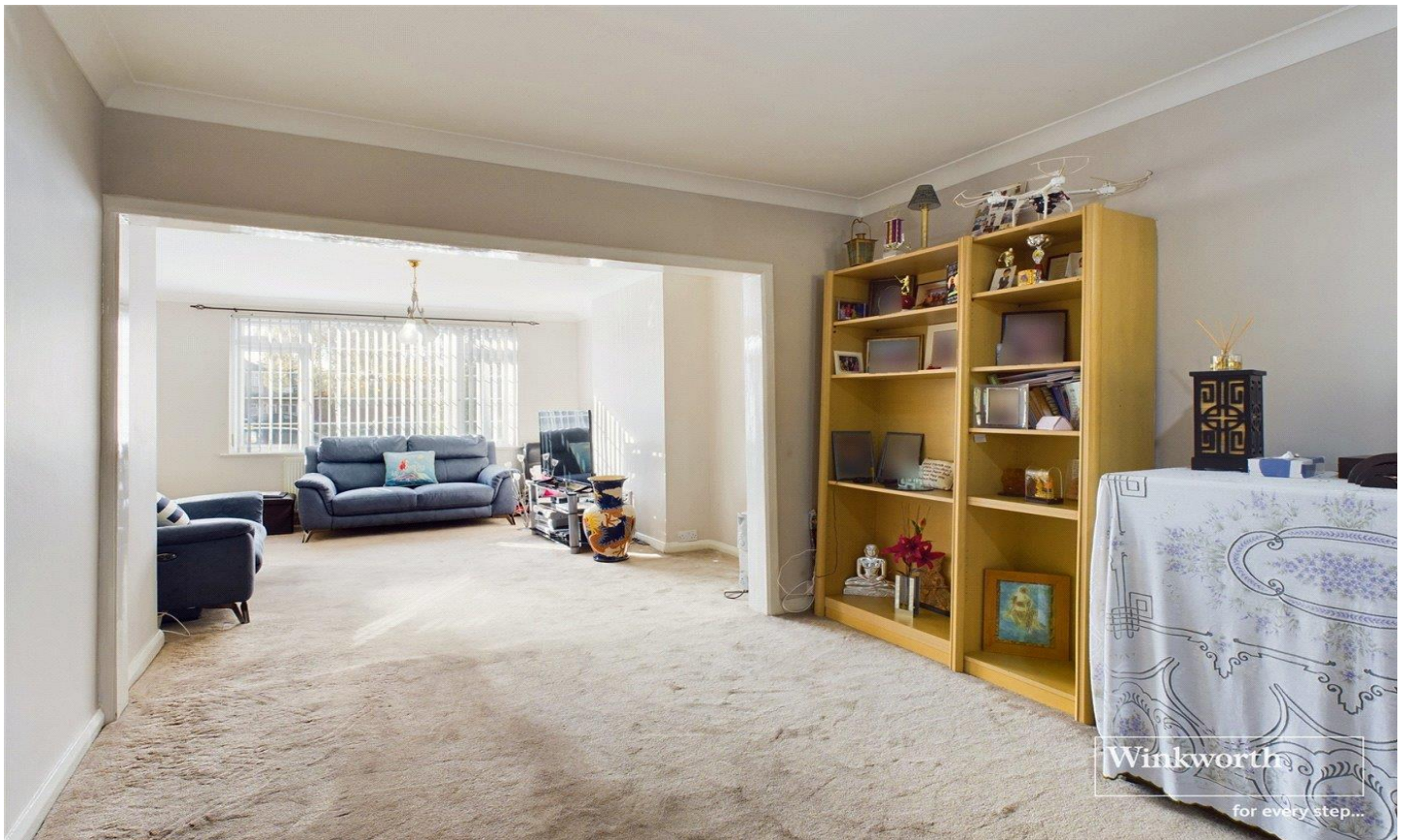
3 BEDROOM SEMI-DETACHED HOUSE LOCATED IN AN EXCLUSIVE CUL-DE-SAC

Kingsbury | 020 8204 0000 | kingsbury@winkworth.co.uk

Winkworth

for every step...

winkworth.co.uk



Located in a desirable CUL-DE-SAC neighborhood, the house features **THREE GENEROUSLY SIZED BEDROOMS**, each thoughtfully designed with fitted wardrobes. The spacious **THROUGH LOUNGE** is adorned with large windows that allow natural light to flood the space highlighting the exquisite details of the interior. The kitchen and dining room are decorated with impeccable style and thoughtful design. One of the key features of this property is the enchanting rear garden which has been extended to full width and has been well-maintained, offering a private sanctuary for both adults and children alike.

Location is key, and this house is strategically situated near reputable schools like **UXENDON MANOR PRIMARY SCHOOL AND CLAREMONT HIGH SCHOOL**, transport links LIKE **THE METROPOLITAN** via Preston Road or Jubilee Line via **KINGSBURY AND QUEENSBURY** underground station, and recreational parks. With the potential to extend (STPP) seize the opportunity to make this gorgeous property your own and let the next chapter of your life unfold in the lap of absolute opulence. Please call us to arrange a viewing.



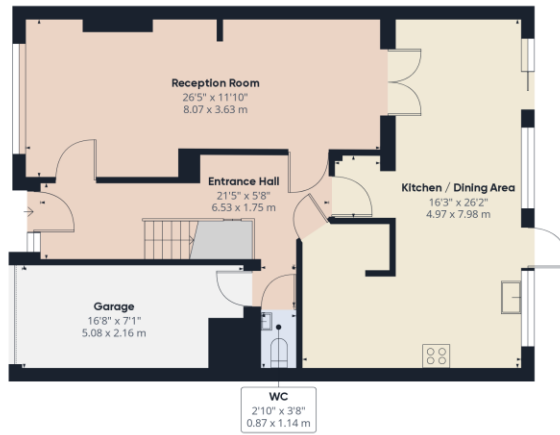
Winkworth

for every step...

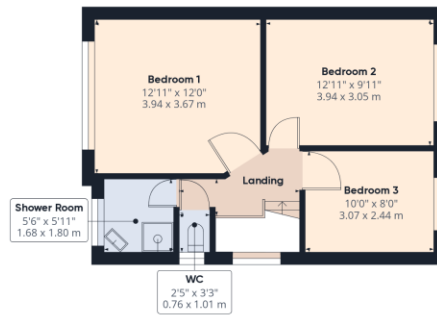


Winkworth

for every step...



Ground Floor



Floor 1

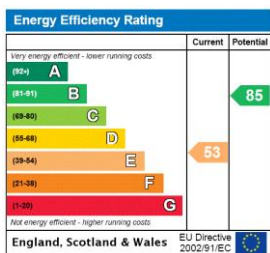
Approximate total area¹⁾
1351.61 ft²
125.57 m²

Excluding balconies and terraces

While every attempt has been made to ensure accuracy, all measurements are approximate, not to scale. This floor plan is for illustrative purposes only.

GIRAFFE360

This floorplan is for illustration purposes only and is not to scale. The position and size of doors, windows, appliances and other features are approximate.



Tenure: Freehold

Council Tax Band: E

Where no figures are shown, we have been unable to ascertain the information. All figures that are shown were correct at the time of printing.

Kingsbury | 020 8204 0000 | kingsbury@winkworth.co.uk



for every step...

winkworth.co.uk

Winkworth wishes to inform prospective buyers and tenants that these particulars are a guide and act as information only. All our details are given in good faith and believed to be correct at the time of printing but they don't form part of an offer or contract. No Winkworth employee has authority to make or give any representation or warranty in relation to this property. All fixtures and fittings, whether fitted or not are deemed removable by the vendor unless stated otherwise and room sizes are measured between internal wall surfaces, including furnishings.