



RIDGMOUNT GARDENS, LONDON, WC1E
£1,695,000 LEASEHOLD

**A BEAUTIFULLY PROPORTIONED THREE OR FOUR BEDROOM APARTMENT
IN GOOD ORDER ON THE RAISED FIRST-FLOOR OF ONE OF
BLOOMSBURY'S FINEST VICTORIAN PORTERED MANSION BUILDINGS.**

Leasehold: Approx. 129 years remaining | Service Charge: Approx. £8,000 PA including reserve | Council Tax: Camden Band G £3,351 | Ground Rent: Approx. £250 PA

West End | 020 7240 3322 | westend@winkworth.co.uk

Winkworth

for every step...

winkworth.co.uk



DESCRIPTION:

The property has been in the same family ownership for over 30 years. With flexible accommodation, it is currently arranged with three bedrooms, one of which is ensuite, a separate sit-in kitchen, an impressive double reception plus a generous dining room which can double as a large bedroom. The classic décor, wooden flooring, period features and high ceilings combine create one of the finest examples of a flat in its class and the epitome of Bloomsbury living. Ridgmount Gardens is an architecturally handsome redbrick mansion building found in the heart of Bloomsbury. Access to The City, The West End, The Legal Quarter and the major rail termini is easy and convenient. The nearest Underground stations are Tottenham Court Road, Gough Street and Warren Street.



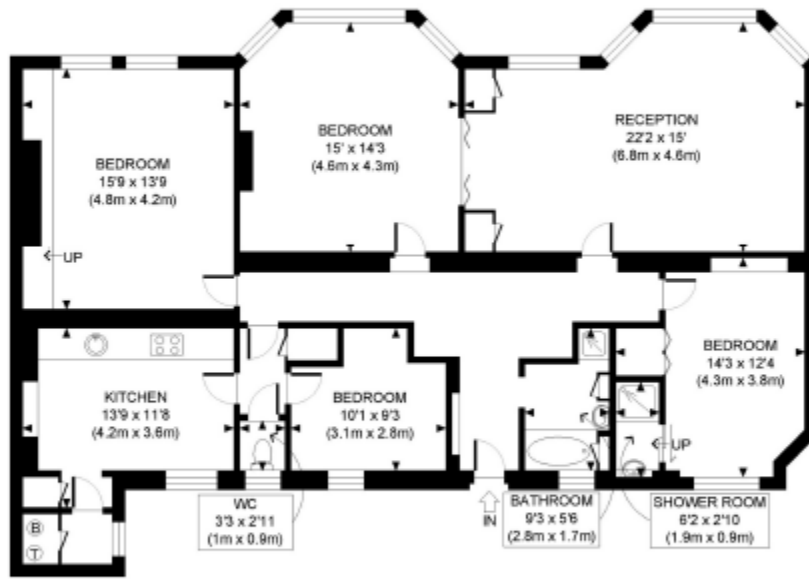
Winkworth

for every step...



Winkworth

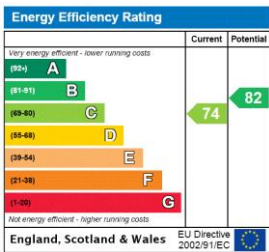
for every step...



FIRST FLOOR
GROSS INTERNAL
FLOOR AREA 1439 SQ FT

APPROX. GROSS INTERNAL FLOOR AREA: 1439 SQ FT/ 134 SQM

This floorplan is for illustration purposes only and is not to scale. The position and size of doors, windows, appliances and other features are approximate.



West End | 020 7240 3322 | westend@winkworth.co.uk



for every step...

winkworth.co.uk

Winkworth wishes to inform prospective buyers and tenants that these particulars are a guide and act as information only. All our details are given in good faith and believed to be correct at the time of printing but they don't form part of an offer or contract. No Winkworth employee has authority to make or give any representation or warranty in relation to this property. All fixtures and fittings, whether fitted or not are deemed removable by the vendor unless stated otherwise and room sizes are measured between internal wall surfaces, including furnishings.