



MYDDELTON SQUARE, CLERKENWELL, LONDON, EC1R
£595,000 SHARE OF FREEHOLD

DESCRIPTION:

A spacious one bedroom, top (third) floor apartment in a Grade II Listed, Georgian terrace on Myddelton Square. The property comprises large open plan reception with modern fitted kitchen, large bathroom (with separate bath and shower cubicle) and a double bedroom. The property also benefits from an abundance of natural light, carpet and south facing views over the church square.

Clerkenwell & City | 020 7405 1288 | clerkenwell@winkworth.co.uk

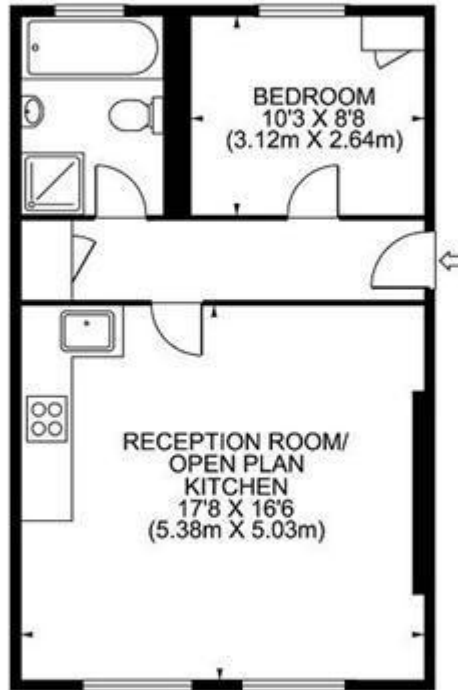
Winkworth

for every step...

winkworth.co.uk

Myddleton Square, EC1

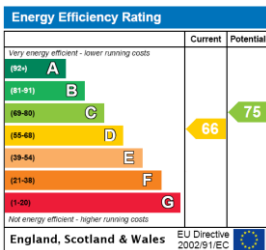
Approximate Gross Internal Area :- 48 sq m / 519 sq ft



THIRD FLOOR

FOR IDENTIFICATION ONLY NOT TO SCALE
THEFLOORPLANSTUDIO.COM

This floorplan is for illustration purposes only and is not to scale. The position and size of doors, windows, appliances and other features are approximate.



Tenure: Share of Freehold

Term: 0 year and 0 months

Service Charge: Approx. £1,028 per annum

Council Tax Band: C

Where no figures are shown, we have been unable to ascertain the information. All figures that are shown were correct at the time of printing.

Clerkenwell & City | 020 7405 1288 | clerkenwell@winkworth.co.uk

Winkworth

for every step...

winkworth.co.uk

Winkworth wishes to inform prospective buyers and tenants that these particulars are a guide and act as information only. All our details are given in good faith and believed to be correct at the time of printing but they don't form part of an offer or contract. No Winkworth employee has authority to make or give any representation or warranty in relation to this property. All fixtures and fittings, whether fitted or not are deemed removable by the vendor unless stated otherwise and room sizes are measured between internal wall surfaces, including fumishings.