



ST. STEPHENS GARDENS, W2  
**£685,000 SHARE OF FREEHOLD**

**AN EXCEPTIONAL ONE-BEDROOM FLAT SITUATED ON THE RAISED  
GROUND FLOOR OF A CHARMING TERRACED PERIOD CONVERSION,  
IN THIS INCREDIBLY WELL CONNECTED NOTTING HILL LOCATION**

Notting Hill Sales | 0207 727 3227 | nottinghill@winkworth.co.uk

**Winkworth**

for every step...

*winkworth.co.uk*



## **DESCRIPTION:**

An exceptional one-bedroom flat situated on the raised ground floor of a charming terraced period conversion, in this incredibly well-connected Notting Hill location. This bright flat is situated on the raised ground floor and is presented in excellent condition throughout. The accommodation extends to 441 sq.ft and comprises; entrance hall, open-plan kitchen reception room, one bedroom with built in wardrobes and overlooking the rear and a bathroom in between.

## **ADDITIONAL INFORMATION**

Electricity – Mains

Water – Mains

Sewerage – Mains

Heating – Gas

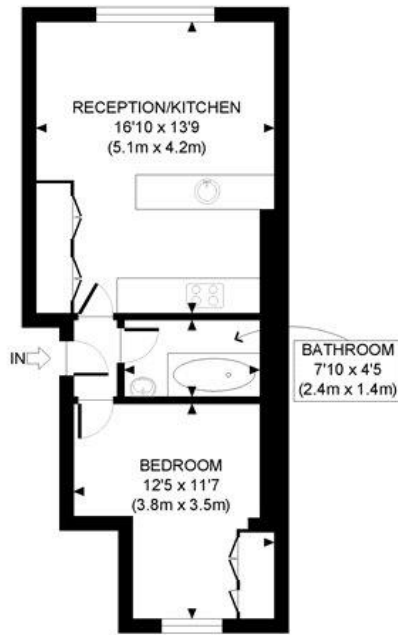
Broadband <https://checker.ofcom.org.uk/en-gb/broadband-coverage>

Mobile Coverage <https://checker.ofcom.org.uk/en-gb/mobile-coverage>

## **LOCATION:**

St Stephens Gardens is a peaceful cul-de-sac of imposing period buildings running off the quieter eastern end of Westbourne Park Road, just around the corner from the popular local hangouts of the Cow and the Westbourne and within easy walking distance of the amenities of Westbourne Grove. Royal Oak Underground station is a short walk away.





RAISED GROUND FLOOR  
GROSS INTERNAL  
FLOOR AREA 416 SQ FT

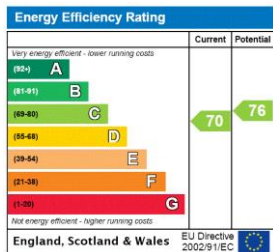
APPROX. GROSS INTERNAL FLOOR AREA: 416 SQ FT/ 39 SQM

**Winkworth**

This plan is for illustrative purposes only and should be used as such by any prospective client. Whilst every attempt has been made to ensure the accuracy of the Floor Plan contained here, measurements of the doors, windows, rooms and any other items are approximate and no responsibility is taken for any errors, omissions, or misstatement. The services, systems and appliances shown have not been tested and no guarantee as to the operability or efficiency can be given.

PROPERTY PHOTO PLANS COOKERY, LIGHTING, PLUMBING, ENGINEERING

This floorplan is for illustration purposes only and is not to scale. The position and size of doors, windows, appliances and other features are approximate.



**Tenure:** Share of Freehold

**Term:** 988 year and 11 months

**Service Charge:** £3,380 per annum

**Ground Rent:** £ 0 Annually (subject to increase)

**Council Tax Band:** C (Westminster)

Where no figures are shown, we have been unable to ascertain the information. All figures that are shown were correct at the time of printing.

**Winkworth**

Notting Hill Sales | 0207 727 3227 | nottinghill@winkworth.co.uk

for every step...

winkworth.co.uk

Winkworth wishes to inform prospective buyers and tenants that these particulars are a guide and act as information only. All our details are given in good faith and believed to be correct at the time of printing but they don't form part of an offer or contract. No Winkworth employee has authority to make or give any representation or warranty in relation to this property. All fixtures and fittings, whether fitted or not are deemed removable by the vendor unless stated otherwise and room sizes are measured between internal wall surfaces, including furnishings.