

PARKHILL ROAD, NW3 £625,000 SHARE OF FREEHOLD

A beautifully presented two-bedroom second floor apartment set within a well-maintained period building. It offers two double bedrooms, one family bathroom and an en-suite shower, a separate kitchen and a generously sized living room.

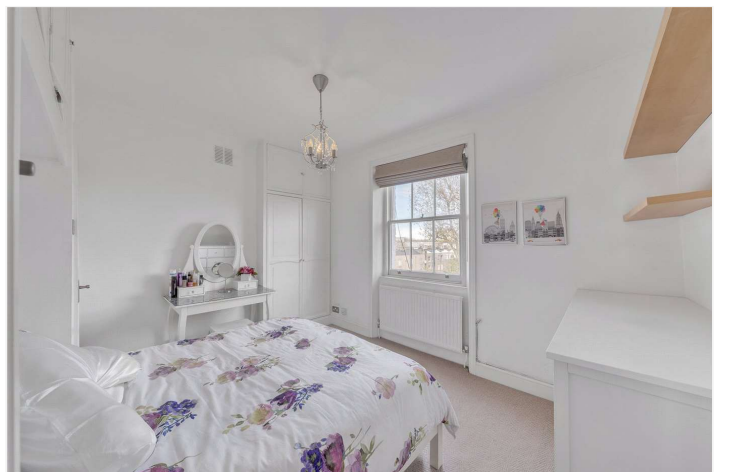
Parkhill Road is a highly sought after residential street with excellent access to transport links and local amenities. The Northern Line can be accessed easily from Belsize Park station (approximately 0.4m). The Overground line is accessible via Hampstead Heath station (approximately 0.7m). Some of the many benefits of this location include the proximity to many charming boutiques, shops and restaurants in Belsize Park, Steeles Village, England's Lane, Primrose Hill and Camden Town. The property is also close to a number of local schools and the open green spaces of Hampstead Heath.

Two Bedrooms | Family Bathroom | En-Suite Shower | Separate Kitchen | Reception Room

Winkworth

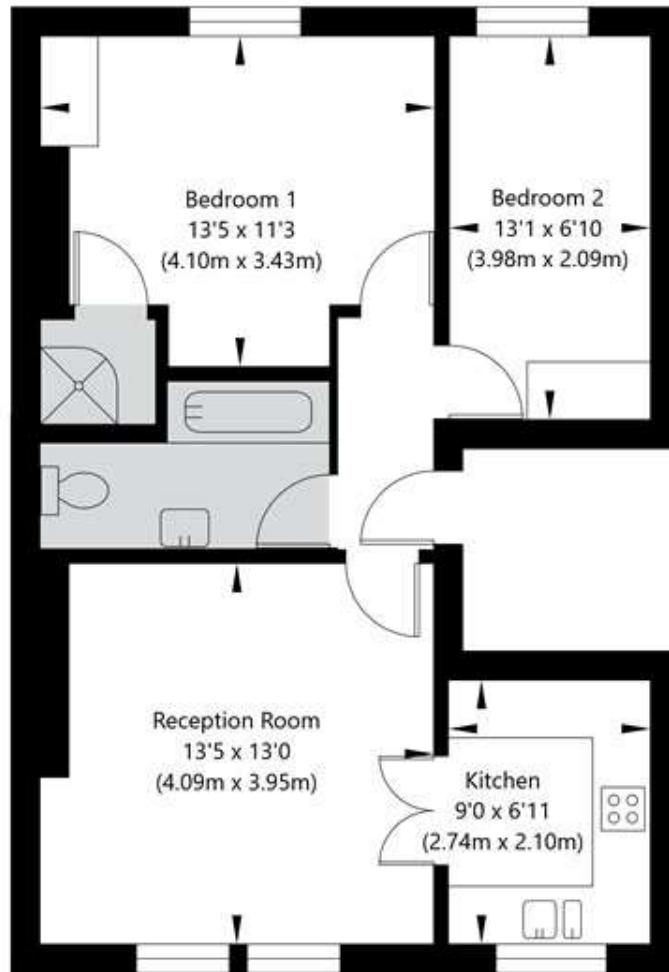
for every step...

[winkworth.co.uk/west-hampstead](https://www.winkworth.co.uk/west-hampstead)



Parkhill Road, London NW3 2YT


Second Floor
GROSS INTERNAL FLOOR AREA
APPROX. 53.63 SQ M / 577 SQ FT



APPROXIMATE GROSS INTERNAL FLOOR AREA 53.63 SQ M / 577 SQ FT
THIS FLOOR PLAN IS FOR ILLUSTRATIVE PURPOSES ONLY AND
SHOULD BE USED FOR THIS PURPOSE BY PROSPECTIVE APPLICANTS AS ITS NOT TO SCALE.

(c) AMBERSHORE PIX LIMITED / PHOTO - VIDEO - FLOOR PLANS / 0800 999 1577 / WWW.AMERSHOREPIX.CO.UK

Energy Efficiency Rating

	Current	Potential
Very energy efficient - lower running costs		
(92+) A		
(81-91) B		
(69-80) C		80
(55-68) D	68	
(39-54) E		
(21-38) F		
(1-20) G		
Not energy efficient - higher running costs		
England, Scotland & Wales	EU Directive 2002/91/EC	

Tenure: Share of Freehold

Term: Expires - 24/06/2986

Service Charge: £2,200 per annum

Ground Rent: A peppercorn

Council Tax Band: E

Where no figures are shown, we have been unable to ascertain the information. All figures that are shown were correct at the time of printing.

Where no figures are shown, we have been unable to ascertain the information. All figures that are shown were correct at the time of printing. These particulars are not an offer or contract, nor part of one. You should not rely on statements by Winkworth in the particulars or by word of mouth or in writing "information" as being factually accurate about the property, its condition or its value. Winkworth does not have any authority to make any representations about the property, and accordingly any information given is entirely without responsibility on the part of the agents, seller(s) or lessor(s). These particulars are prepared on the basis of the information supplied by our client and are a rough guide for information only. The photographs show only certain parts of the property. We are not able to check all of the information and therefore are unable to guarantee accuracy. All interested parties are therefore advised to undertake all necessary inspections and checks that they deem appropriate. Where displayed, the square footage is taken from the floor plans, which are created by an independent supplier. These measurements are approximate and included for illustrative purposes only. The measurements may vary. Winkworth does not make any representation as to the accuracy of these measurements and you should seek to verify them for yourself. Winkworth accept no liability for any loss you may suffer if you rely on these measurements. All fixtures and fittings, whether fitted or not are deemed removable by the vendor unless stated. Any reference to alterations to, or use of, any part of the property does not mean that any necessary planning, building regulations or other consent has been obtained. Amenities and appliances have not been tested

West Hampstead | 142 West End Lane, London, NW6 1SD | 020 7483 7602 |

westhampstead@winkworth.co.uk

Winkworth

for every step...

winkworth.co.uk/west-hampstead

Winkworth wishes to inform prospective buyers and tenants that these particulars are a guide and act as information only. All our details are given in good faith and believed to be correct at the time of printing but they don't form part of an offer or contract. No Winkworth employee has authority to make or give any representation or warranty in relation to this property. All fixtures and fittings, whether fitted or not are deemed removable by the vendor unless stated otherwise and room sizes are measured between internal wall surfaces, including furnishings.