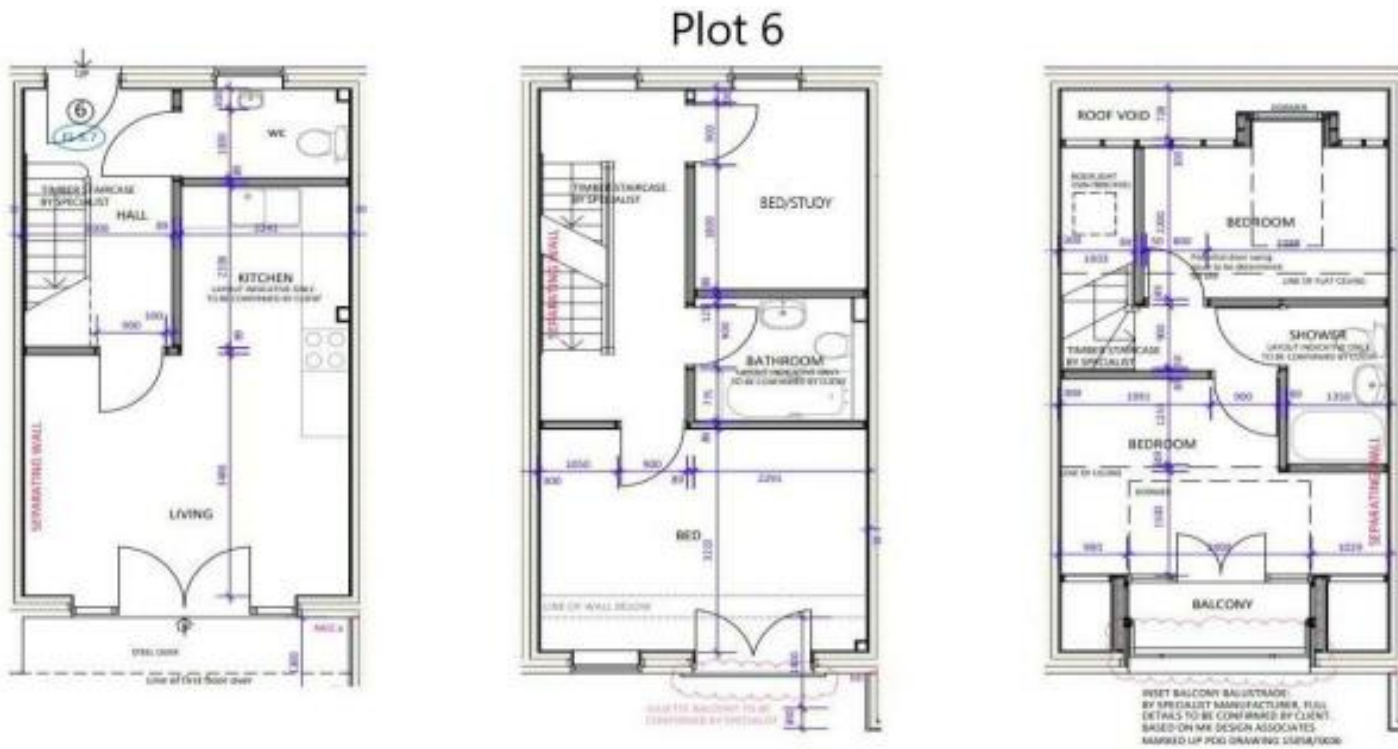
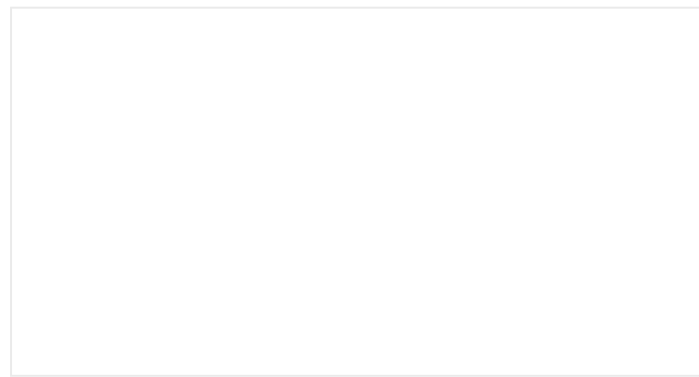


Plot 6 Mays Wharf, Eastgate, Bourne, Lincolnshire

Approximate gross internal area:

Main house	Insert measurements
Insert area	Insert measurements
Insert area	Insert measurements
Total	Insert total

This floorplan is for illustration purposes only and is not to scale. The position and size of doors, windows, and other features are approximate.



Plot 6 Mays Wharf, Eastgate, Bourne, Lincolnshire, PE10

£255,000 Freehold

Winkworth are delighted to bring to the market this brand new development of 11 bespoke Architect designed townhouses located in the market town of Bourne with river views. Finished to an extremely high standard boasting quality designer kitchens with a choice of finishes subject to build program, Juliet and inset balconies with views over the river, gas central heating to radiators, high performance spec glazing and the opportunity to customise your home with the choice of floor coverings, wall tiled, paint colours and the help of a professional interior designer to design your own decor.

Winkworth Bourne | 01778392807 |
 bourne@winkworth.co.uk
winkworth.co.uk/bourne

Under the Property Misdescriptions Act 1991, the Particulars are a guide and act as information only. All details are given in good faith and are believed to be correct at time of printing. Winkworth give no representation as to their accuracy and potential purchasers or tenants must satisfy themselves by inspection or otherwise as to their correctness. No employee at Winkworth has authority to make or give any representation or warranty in the relation to this property.



winkworth.co.uk/bourne

See things differently.



Second Floor

Bedroom - 13'1" x 9'1" (4m x 2.77m)

Bedroom - 10'3" x 6'5" (3.12m x 1.96m)

Shower Room

LOCAL AUTHORITY

TENURE

Freehold

COUNCIL TAX BAND

SERVICE CHARGE

£0

GROUND RENT

£0

DIRECTIONS

LOCATION

DESCRIPTION

ACCOMMODATION

Reception Hall

Claokroom

Open Plan Kitchen/Living/Dining Room - 19'4" max x 13'11"
(5.9m max x 4.24m)

First Floor

Bedroom - 14'1" x 10'5" (4.3m x 3.18m)

Study/Bedroom - 9'6" x 7'4" (2.9m x 2.24m)

Bathroom

