



WOODFARRS, CAMBERWELL, LONDON, SE5
£350,000 LEASEHOLD

A VERY WELL PRESENTED TWO DOUBLE BEDROOM, FIRST FLOOR FLAT, SITUATED IN A CONVENIENT LOCATION CLOSE TO DENMARK HILL STATION AND EAST DULWICH.

DESCRIPTION:

A very well presented two double bedroom, first floor flat, situated in a convenient location close to Denmark Hill station and East Dulwich. Situated on the first floor is this well presented to double bedroom flat. Boasting a large reception, complete with wood flooring, high ceilings and lots of natural light. A spacious eat-in kitchen diner, complete with fully fitted kitchen, lots of storage and integrated appliances. The property further boasts a private balcony and is offered to the market with no onward chain. The location provides fantastic access to Camberwell, Herne Hill and East Dulwich. Transport links are provided via Herne Hill station, Denmark Hill station for the overground or a short walk to East Dulwich station for direct links to London Bridge.

Dulwich | 020 8299 2722 | dulwich@winkworth.co.uk

Tenure Leasehold approx. 90 yrs remaining | Council Tax Band B – London Borough of Southwark | Service Charge TBC | Ground Rent £10 pa

winkworth.co.uk

AT A GLANCE

- First Floor Flat
- Two Double Bedrooms
- Private Balcony
- Chain Free
- Fantastic Transport Links

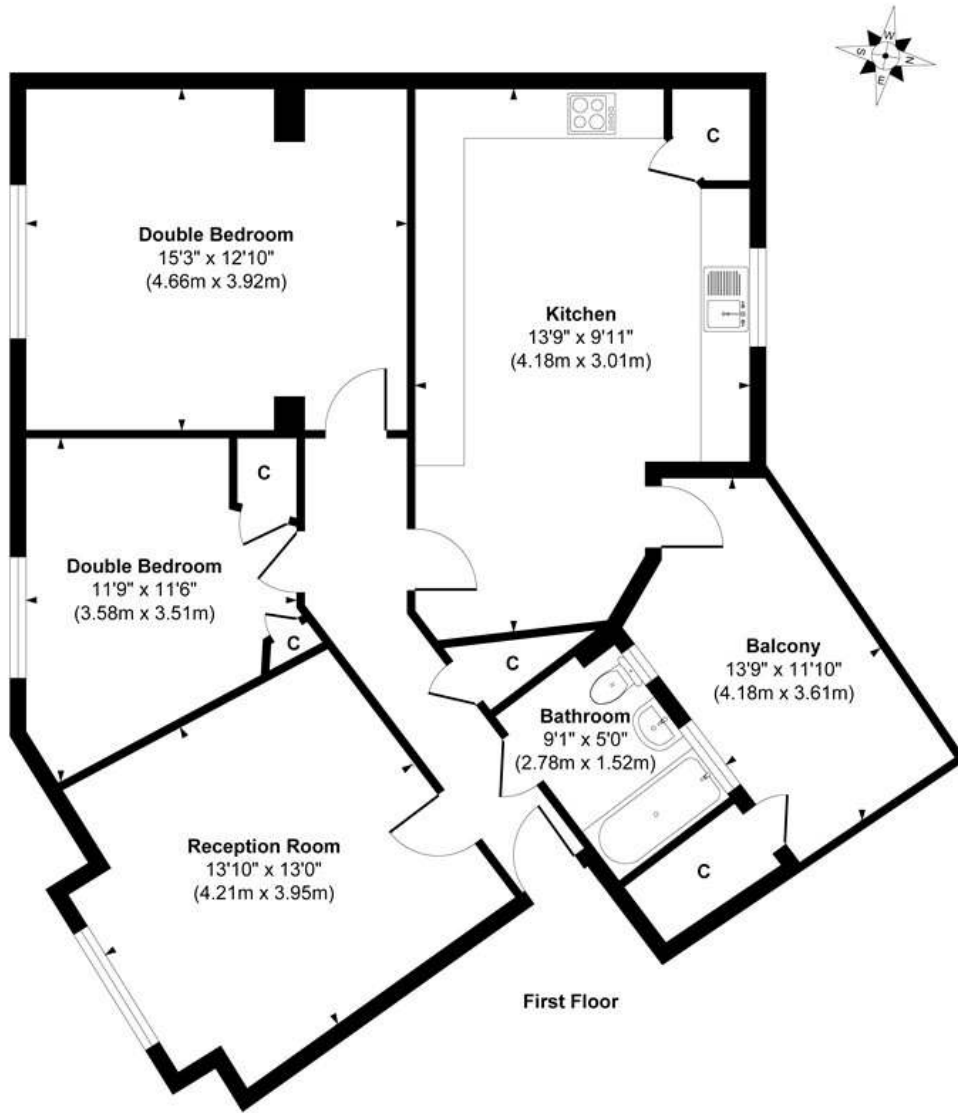
Winkworth

See things differently



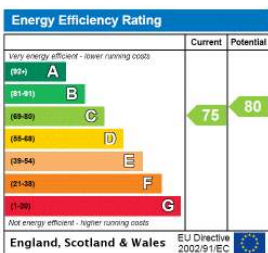


Woodfarrs



Approx. Gross Internal Floor Area 951 sq. ft / 88.36 sq. m
 Illustration for identification purposes only, measurements are approximate, not to scale.
 Produced by Elements Property

This floorplan is for illustration purposes only and is not to scale. The position and size of doors, windows, appliances and other features are approximate.



Dulwich | 020 8299 2722 | dulwich@winkworth.co.uk



winkworth.co.uk

See things differently

Winkworth wishes to inform prospective buyers and tenants that these particulars are a guide and act as information only. All our details are given in good faith and believed to be correct at the time of printing but they don't form part of an offer or contract. No Winkworth employee has authority to make or give any representation or warranty in relation to this property. All fixtures and fittings, whether fitted or not are deemed removable by the vendor unless stated otherwise and room sizes are measured between internal wall surfaces, including furnishings.