



## 7 ROSEMOOR

NEWBURY RG14 2FG

### \*NO ONWARD CHAIN\*

A smartly presented, modern, three bedroom semi-detached house on the north side of Newbury.

The property is situated in a no through road and comprises entrance hall, sitting room with double doors to the dining room, kitchen and cloakroom to the ground floor.

To the first floor is the master bedroom with ensuite shower room, two further bedrooms and a bathroom.

The property is heated with an efficient air source heat pump.

There is off road parking for at least two cars, and a good sized rear garden.



Winkworth

## AT A GLANCE

- 871 Square feet/ 80 square metres
- \*NO ONWARD CHAIN\*
- Three bedrooms
- Two bathrooms
- Sitting room
- Dining room
- Kitchen
- Cloakroom
- Off road parking
- Garden

## UTILITIES

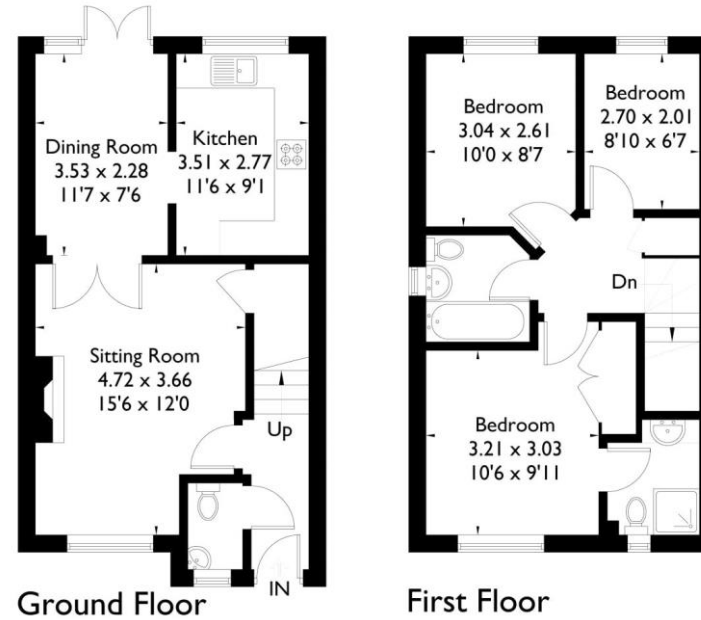
Mains water and drainage  
Air source heat pump  
West Berkshire Council Tax Band: D  
EPC: C  
No known mobile or broadband issues.

## DIRECTIONS

What3words:///fool.unless.spray

Rosemoor Gardens, Newbury, RG14 2FG

Approximate Gross Internal Area = 80.9 sq m / 871 sq ft



## Newbury Office

43 Northbrook Street, Newbury, Berkshire RG14 1DT  
01635 552552 | [newbury@winkworth.co.uk](mailto:newbury@winkworth.co.uk)

[winkworth.co.uk/newbury](http://winkworth.co.uk/newbury)

# Winkworth

See things differently.