



WESTBROOK ROAD, THORNTON HEATH, CR7
£500,000 FREEHOLD

BEAUTIFULLY PRESENTED THREE BEDROOM TERRACED HOUSE FOR SALE

Crystal Palace | 02038693222 | crystalpalace@winkworth.co.uk

Winkworth

for every step...

winkworth.co.uk



DESCRIPTION:

Winkworth is pleased to offer this beautifully presented three-bedroom terraced house for sale on Westbrook Road.

The property has been tastefully refurbished to a high standard throughout by the current owner's and comprises entrance hallway, spacious double reception and dining room with patio doors out onto the garden, separate fitted kitchen and modern family bathroom. The garden further benefits from a garden room which offers great additional storage space and could be converted into a home office or gym by the new owners. Upstairs you will find three good sized bedroom plus a WC.

The transport links of Thornton Heath which offer links into London Victoria in 26 minutes & London Bridge in 36 minutes as well as access to Clapham Junction & Balham station for the Northern line tube is a 20-minute walk away. Norwood Junction station can be reached by a short bus journey and offers links into London Bridge in 13 minutes and the Overground network serving East London. The superb local amenities on and around the Crystal Palace "Triangle" which offers an abundance of independent shops, cafes, bars & restaurants is within easy reach.

Croydon Council Tax Band D





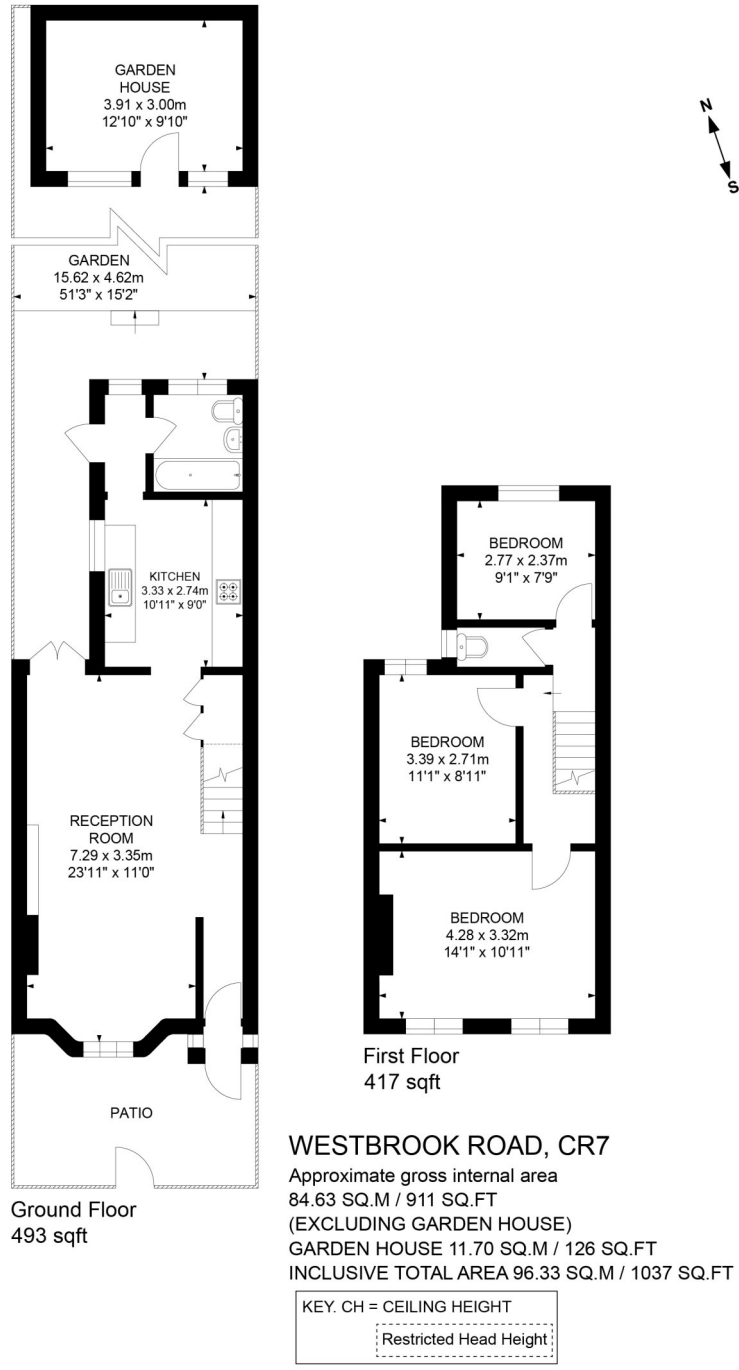


Illustration for Identification Purposes Only. Not To Scale.
Floor Plan Drawing According To RICS Guidelines.

This floorplan is for illustration purposes only and is not to scale. The position and size of doors, windows, appliances and other features are approximate.

Score	Energy rating	Current	Potential
92+	A		
81-91	B		82 B
69-80	C		
55-68	D	64 D	
39-54	E		
21-38	F		
1-20	G		

Tenure: Freehold
Term: 0 year and 0 months
Service Charge: £0 per annum
Ground Rent: £ 0 Annually (subject to increase)
Council Tax Band: D
 Where no figures are shown, we have been unable to ascertain the information. All figures that are shown were correct at the time of printing.

Crystal Palace | 02038693222 | crystalpalace@winkworth.co.uk



winkworth.co.uk

Winkworth wishes to inform prospective buyers and tenants that these particulars are a guide and act as information only. All our details are given in good faith and believed to be correct at the time of printing but they don't form part of an offer or contract. No Winkworth employee has authority to make or give any representation or warranty in relation to this property. All fixtures and fittings, whether fitted or not are deemed removable by the vendor unless stated otherwise and room sizes are measured between internal wall surfaces, including furnishings.