



HAMPSTEAD HEIGHTS, LONDON, NW3 £1,795 PER WEEK FURNISHED

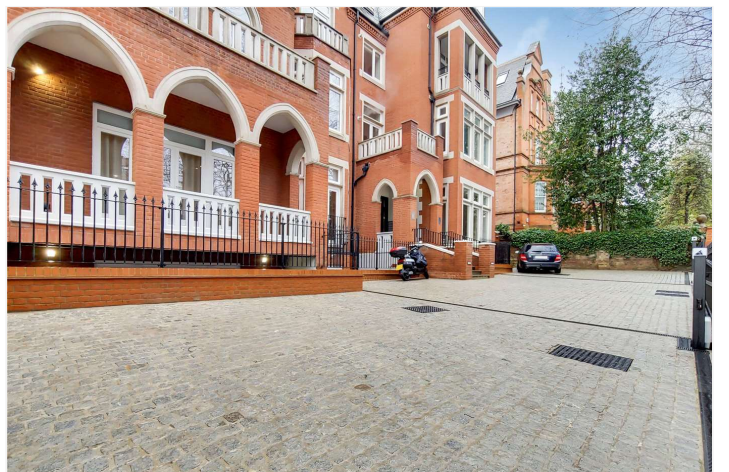
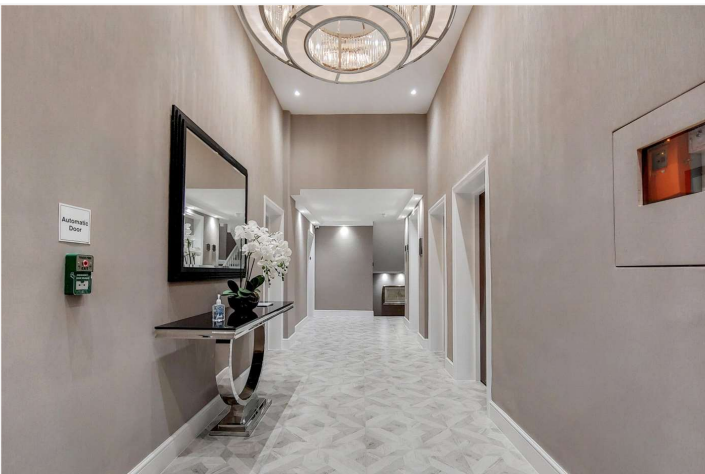
A stylish and contemporary four bedroom apartment set in this red brick period building ideally situated close to the boutiques and chic restaurants and cafes that Hampstead Village (Northern Line) has to offer as well as Swiss Cottage Underground (Jubilee Line) and the amenities of the Finchley. The apartment benefits from high ceilings and a delightful outlook over the resident communal gardens.

Principal Bedroom with Walk In Wardrobe & En Suite | Three Further Bedrooms | Family Bathroom | Shower Room | Kitchen | Reception | Balcony | Third Floor | Contemporary Finish | Communal Gardens

Winkworth

for every step...

winkworth.co.uk/west-hampstead

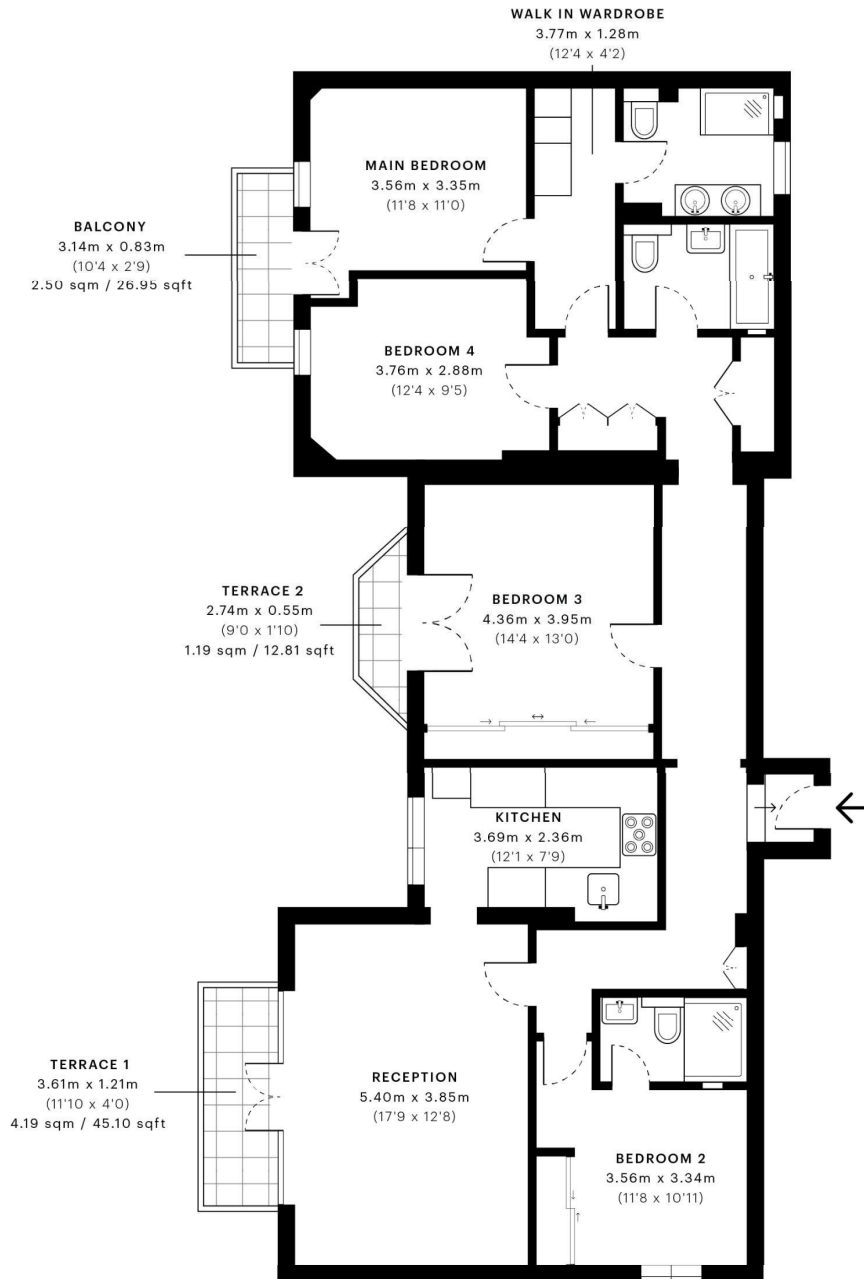


Fitzjohns Avenue, NW3

CAPTURE DATE 29/01/2021 LASER SCAN POINTS 6,129,553

GROSS INTERNAL AREA

121.48 sqm / 1307.60 sqft



— Third Floor

This floor plan has been produced for illustration purposes only and is not to scale.



GROSS INTERNAL AREA (GIA)
The footprint of the property
121.48 sqm / 1307.60 sqft



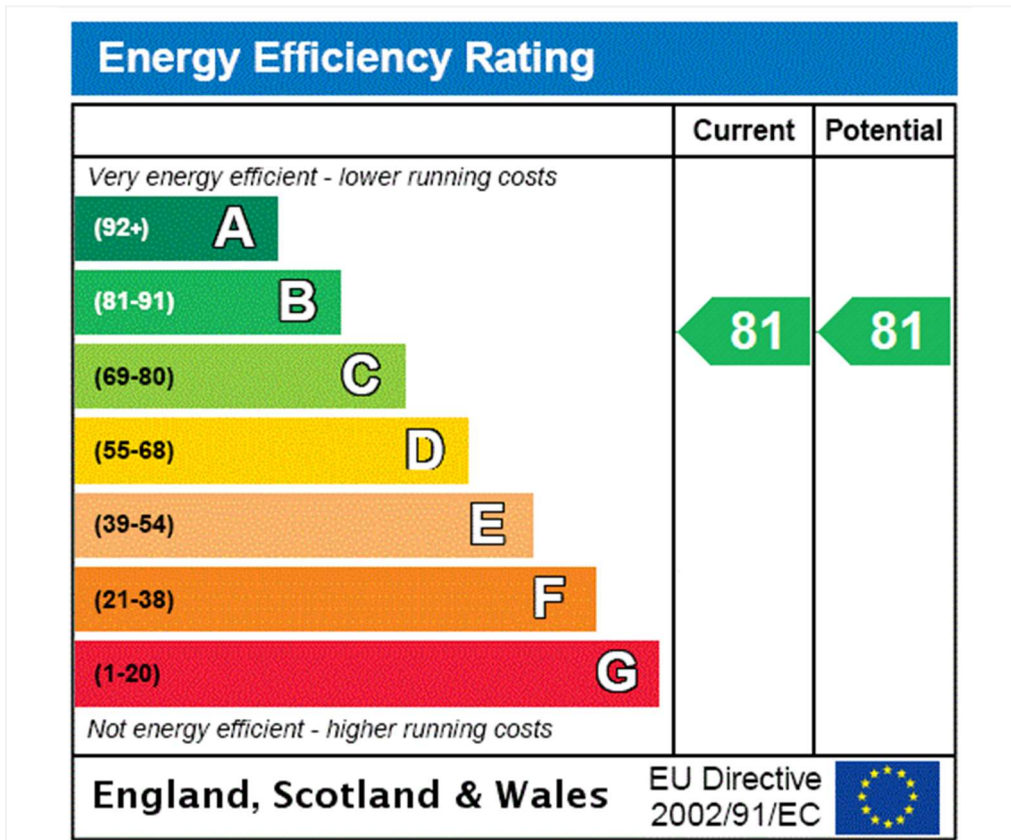
NET INTERNAL AREA (NIA)
Excludes walls and external features
Includes washrooms, restricted head height
111.59 sqm / 1201.14 sqft



EXTERNAL STRUCTURAL FEATURES
Balconies, terraces, verandas etc.
7.92 sqm / 85.25 sqft



RESTRICTED HEAD HEIGHT
Limited use area under 1.5 m
0.00 sqm / 0.00 sqft



Tenancy Deposit: £10,770.00

Holding Deposit: 1 weeks rent where the rent is up to £100,000 per annum, 2 weeks rent where the rent is over £100,000 per annum

Council Tax Band: G

Where no figures are shown, we have been unable to ascertain the information. All figures that are shown were correct at the time of printing.

Where no figures are shown, we have been unable to ascertain the information. All figures that are shown were correct at the time of printing.

These particulars are not an offer or contract, nor part of one. You should not rely on statements by Winkworth in the particulars or by word of mouth or in writing "information" as being factually accurate about the property, its condition or its value. Winkworth does not have any authority to make any representations about the property, and accordingly any information given is entirely without responsibility on the part of the agents, seller(s) or lessor(s). These particulars are prepared on the basis of the information supplied by our client and are a rough guide for information only. The photographs show only certain parts of the property. We are not able to check all of the information and therefore are unable to guarantee accuracy. All interested parties are therefore advised to undertake all necessary inspections and checks that they deem appropriate. Where displayed, the square footage is taken from the floor plans, which are created by an independent supplier. These measurements are approximate and included for illustrative purposes only. The measurements may vary. Winkworth does not make any representation as to the accuracy of these measurements and you should seek to verify them for yourself. Winkworth accept no liability for any loss you may suffer if you rely on these measurements. All fixtures and fittings, whether fitted or not are deemed removable by the vendor unless stated. Any reference to alterations to, or use of, any part of the property does not mean that any necessary planning, building regulations or other consent has been obtained. Amenities and appliances have not been tested

Winkworth

West Hampstead | 142 West End Lane, London, NW6 1SD | 020 7483 7602 |

westhampstead@winkworth.co.uk

for every step...

winkworth.co.uk/west-hampstead

Winkworth wishes to inform prospective buyers and tenants that these particulars are a guide and act as information only. All our details are given in good faith and believed to be correct at the time of printing but they don't form part of an offer or contract. No Winkworth employee has authority to make or give any representation or warranty in relation to this property. All fixtures and fittings, whether fitted or not are deemed removable by the vendor unless stated otherwise and room sizes are measured between internal wall surfaces, including furnishings.