



THE MOUNT, WEMBLEY, MIDDLESEX, HA9
£1,300,000 FREEHOLD

PROUD FAMILY HOME IN A LOVELY LOCATION

Kingsbury | 020 8204 0000 | kingsbury@winkworth.co.uk

Winkworth

for every step...

winkworth.co.uk



Winkworth
for every step...

Nestled within the prestigious enclave of The Mount, Wembley, this gorgeous detached and extended residence presents a remarkable opportunity for those seeking a spacious family home. This proudly kept property boasts an impressive two reception rooms and a dining room, offering a grand and inviting space that seamlessly overlooks the beautifully maintained garden. The bright and airy kitchen, thoughtfully designed, also enjoys tranquil garden views. The home features five generously sized bedrooms and two well-appointed bathrooms, providing ample accommodation for a growing family. Externally, the expansive driveway offers plentiful off-street parking, complemented by a garage for additional storage or vehicle space. Positioned in a well-connected location, residents will enjoy convenient access to local amenities, reputable schools, and excellent transport links, ensuring both comfort and practicality in this desirable setting. An internal viewing is essential.



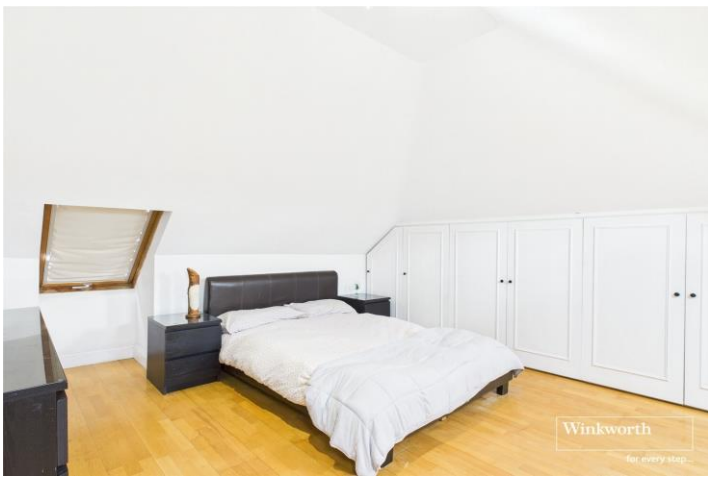
Winkworth
for every step...



Winkworth
for every step...

Winkworth

for every step...



Winkworth

for every step...



Approximate total area⁽¹⁾
 2258.51 ft²
 209.82 m²

Reduced headroom
 83.74 ft²
 7.78 m²

(1) Excluding balconies and terraces.

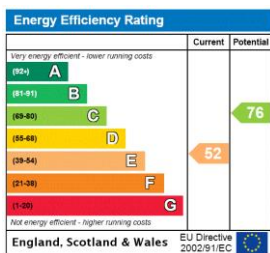
Reduced headroom
 ----- Below 5 ft/1.5 m

While every attempt has been made to ensure accuracy, all measurements are approximate, not to scale. This floor plan is for illustrative purposes only.

Calculations are based on RICS IPMS 3C standard.

GIRAFFE360

This floorplan is for illustration purposes only and is not to scale. The position and size of doors, windows, appliances and other features are approximate.



Tenure: Freehold

Council Tax Band: F - Brent

Where no figures are shown, we have been unable to ascertain the information. All figures that are shown were correct at the time of printing.

Kingsbury | 020 8204 0000 | kingsbury@winkworth.co.uk

Winkworth

for every step...

winkworth.co.uk

Winkworth wishes to inform prospective buyers and tenants that these particulars are a guide and act as information only. All our details are given in good faith and believed to be correct at the time of printing but they don't form part of an offer or contract. No Winkworth employee has authority to make or give any representation or warranty in relation to this property. All fixtures and fittings, whether fitted or not are deemed removable by the vendor unless stated otherwise and room sizes are measured between internal wall surfaces, including furnishings.