



BIRCH GROVE, LONDON, W3
£1,850,000 FREEHOLD

EPC: D
COUNCIL TAX: E

Ealing & Acton | 0208 896 0123 | ealing@winkworth.co.uk

Winkworth

for every step...

winkworth.co.uk



DESCRIPTION:

Investment Opportunity! A substantial semi-detached Freehold house which consists of 3 two-bedroom apartments. The property is offered to the market with no onward chain and all of the units are in very good decorative order throughout. The building also benefits from off-street parking to the front as well as an expansive 70' East-facing rear garden.

Situated on a quiet tree-lined street within a sought-after residential area, the property is conveniently located for Ealing Common station as well as numerous local amenities. The open green spaces of The Common are also within a short walk away.



Winkworth

for every step...



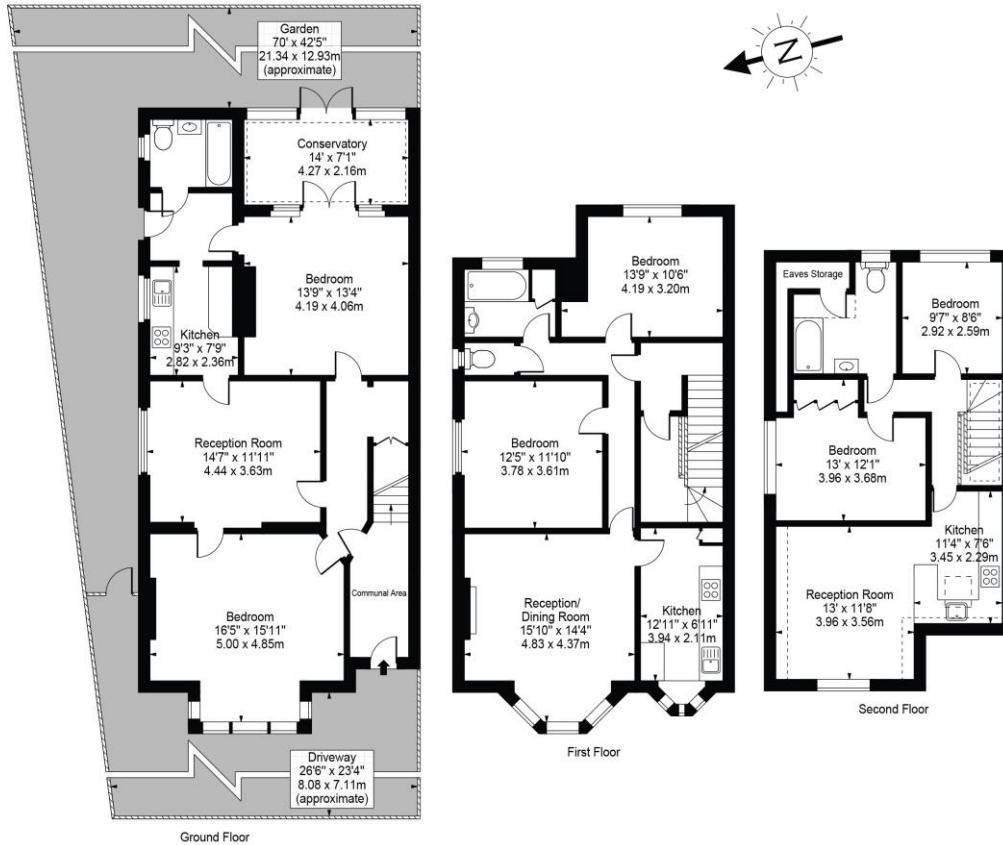
Winkworth

for every step...

Birch Grove, W3

Approx. Total Internal Area 2570 Sq Ft - 238.76 Sq M
(Including Eaves Storage & Restricted Height Area)

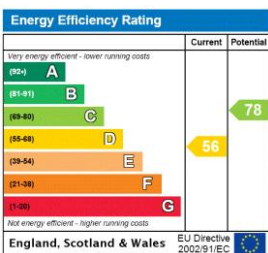
Approx. Gross Internal Area 2503 Sq Ft - 232.54 Sq M
(Excluding Eaves Storage & Restricted Height Area)



For Illustration Purposes Only - Not To Scale Floor Plan by Mira Nikolova Photography

This floor plan should be used as a general outline for guidance only and does not constitute in whole or in part an offer or contract. Any intending purchaser or lessee should satisfy themselves by inspection, searches, enquiries and full survey as to the correctness of each statement. Any areas, measurements or distances quoted are approximate and should not be used to value a property or be the basis of any sale or let.

This floorplan is for illustration purposes only and is not to scale. The position and size of doors, windows, appliances and other features are approximate.



Tenure: Freehold

Term: N/A

Service Charge: N/A

Ground Rent: N/A

Council Tax Band: E

Where no figures are shown, we have been unable to ascertain the information. All figures that are shown were correct at the time of printing.

Ealing & Acton | 0208 896 0123 | ealing@winkworth.co.uk

Winkworth

for every step...

winkworth.co.uk

Winkworth wishes to inform prospective buyers and tenants that these particulars are a guide and act as information only. All our details are given in good faith and believed to be correct at the time of printing but they don't form part of an offer or contract. No Winkworth employee has authority to make or give any representation or warranty in relation to this property. All fixtures and fittings, whether fitted or not are deemed removable by the vendor unless stated otherwise and room sizes are measured between internal wall surfaces, including furnishings.