

FLAGSTAFF ROAD, BERKSHIRE, RG2 6BY
£1,500 PER MONTH UNFURNISHED

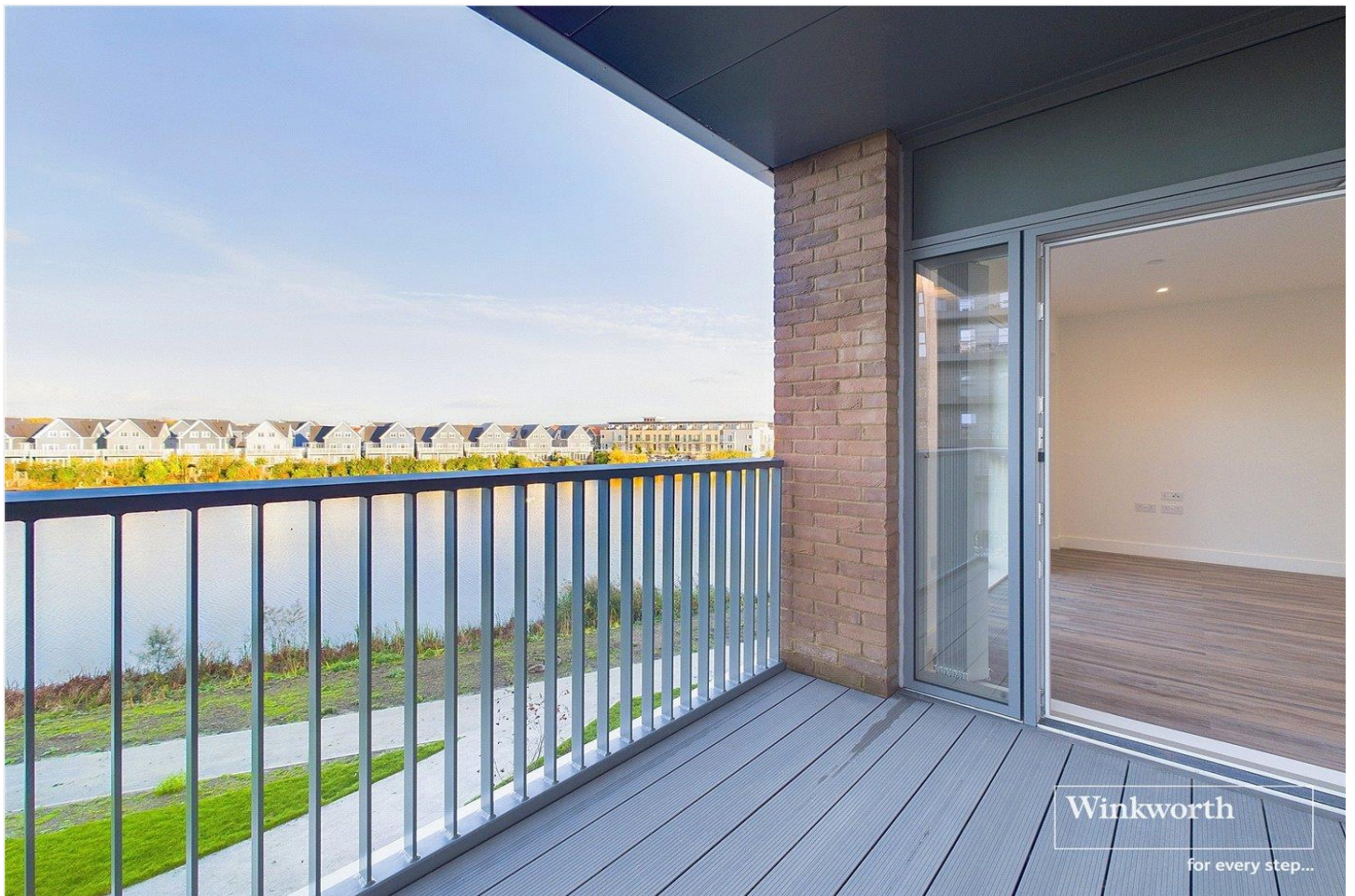
**BRAND NEW ONE BEDROOM BANKSIDE
GARDENS APARTMENT. AVAILABLE NOW.**

Reading | 0118 4022 300 | reading@winkworth.co.uk

Winkworth

for every step...

winkworth.co.uk



DESCRIPTION:

Brand new one bedroom second floor apartment located within the Bankside Gardens development at Green Park Village. The property comprises open plan living room/kitchen, private balcony, one double bedroom and a three piece bathroom. Allocated parking space included.

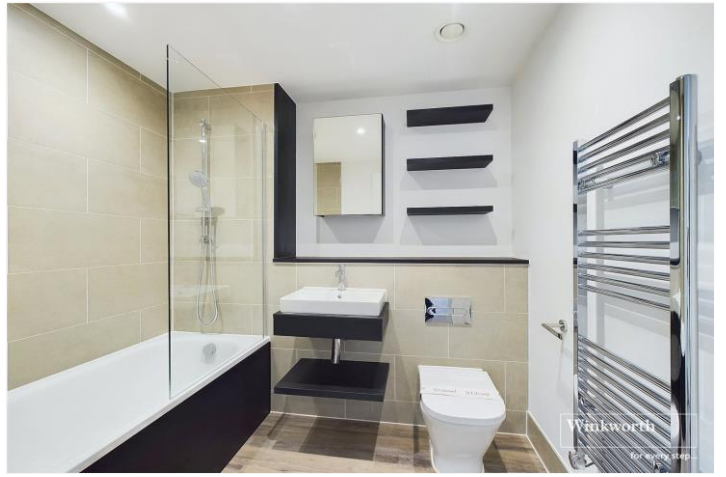
Available now. Unfurnished.

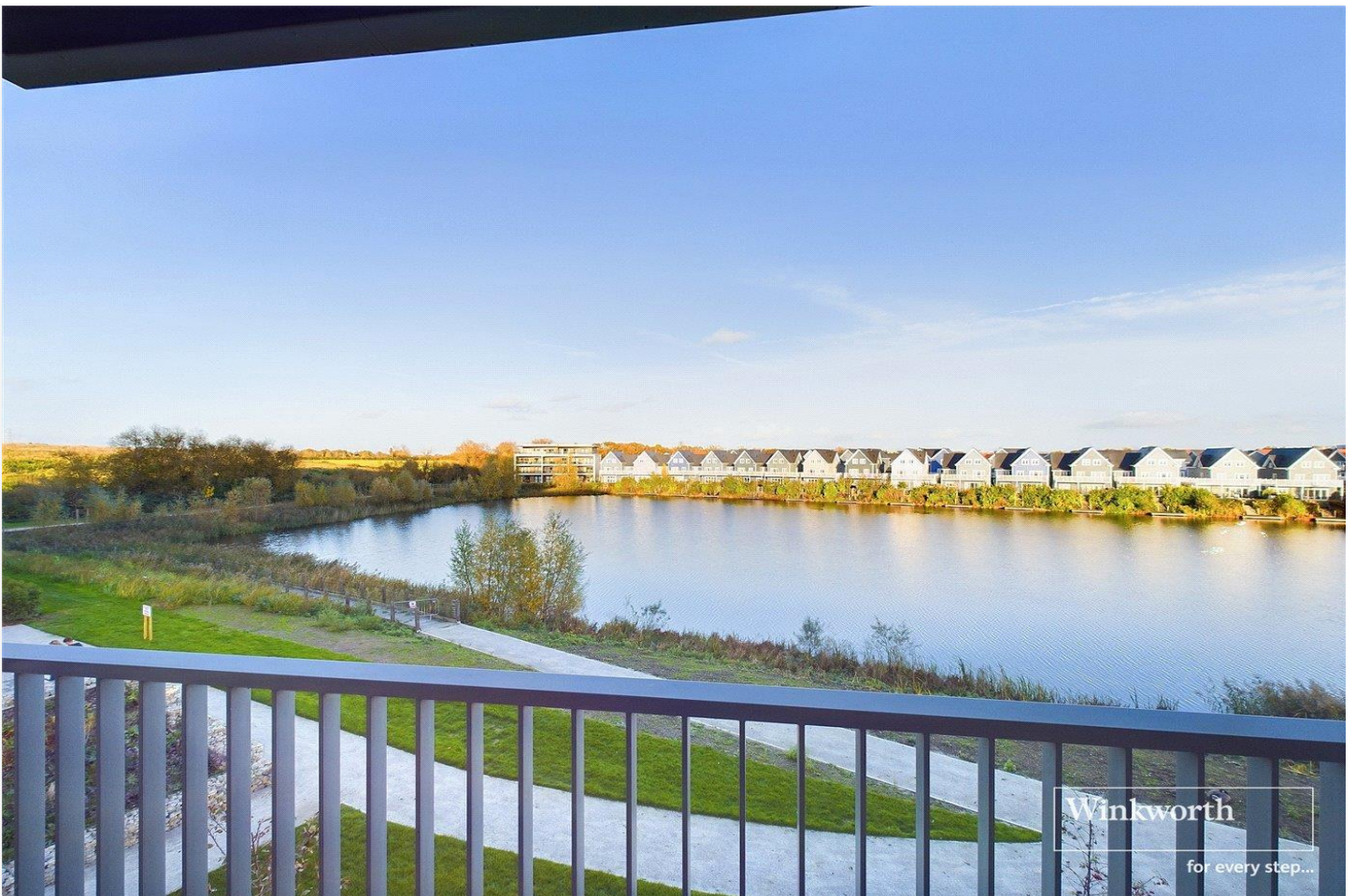
The development benefits from Green Park train station linking Reading with Basingstoke and London. Located just minutes from central Reading and providing easy access to the M4 at junction 11. The apartment building also has use of The Community Hub which includes concierge, gym, co-working space and cinema room (included within the rental price).

AT A GLANCE

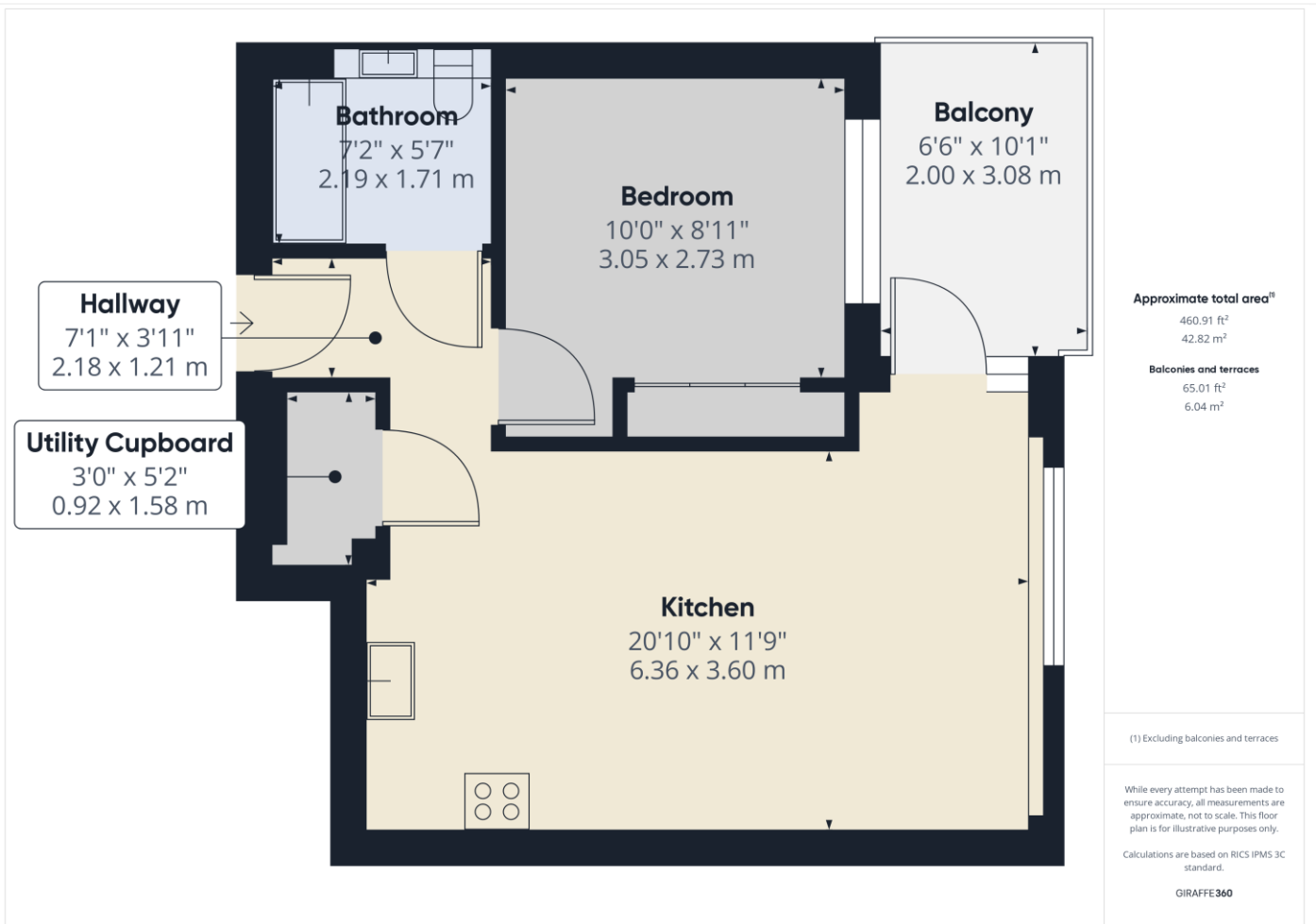
- Brand new one bedroom apartment
- Second floor (with lift access)
- Private balcony
- Access to the residents community hub
- Council tax band C
- Allocated parking space
- Available now







Winkworth
for every step...



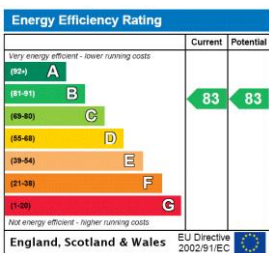
This floorplan is for illustration purposes only and is not to scale. The position and size of doors, windows, appliances and other features are approximate.

Deposit: £1,730.77

Holding Deposit: £346.15

Council Tax Band: C

Where no figures are shown, we have been unable to ascertain the information. All figures that are shown were correct at the time of printing.



Reading | 0118 4022 300 | reading@winkworth.co.uk



for every step...

winkworth.co.uk

Winkworth wishes to inform prospective buyers and tenants that these particulars are a guide and act as information only. All our details are given in good faith and believed to be correct at the time of printing but they don't form part of an offer or contract. No Winkworth employee has authority to make or give any representation or warranty in relation to this property. All fixtures and fittings, whether fitted or not are deemed removable by the vendor unless stated otherwise and room sizes are measured between internal wall surfaces, including furnishings.