



BREWSTER GARDENS, W10
£3,471 PER MONTH

SPACIOUS THREE BEDROOM TWO BATHROOM SPLIT LEVEL APARTMENT

North Kensington | 020 7792 5000 | northkensington@winkworth.co.uk

Tenant Fees Apply: Details of fees for tenant referencing, tenancy agreement admin fees and renewal fees are available on the Winkworth website and the link can be found with the displayed rent for the property. Tenants should ensure they are fully conversant with these upfront fees and other costs that are involved at the outset of the tenancy before making an offer to rent and your local Winkworth office will provide written details upon request.

winkworth.co.uk

Winkworth

for every step...

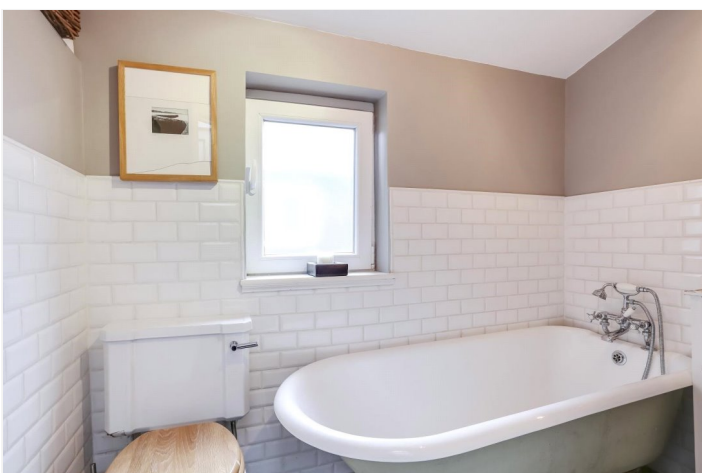


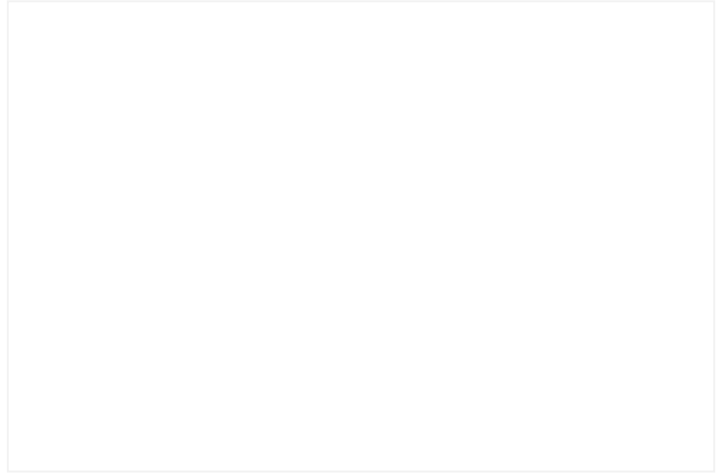
Located on a quiet road in North Kensington, this spacious 3 bedroom duplex flat offers generously sized living space including a fabulous bay fronted reception room with exposed wooden flooring.

Brewster Gardens is well served by the local shops and eateries on North Pole Road while the fashionable bars and restaurants of Notting Hill and Westfield shopping centre are also easily accessible. Latimer Road is the nearest station.

AT A GLANCE

- SHARERS WELCOME
- SPACIOUS
- GREAT LOCATION
- BRIGHT AND AIRY




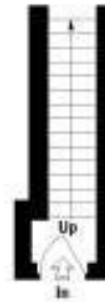


Brewster Gardens, W2

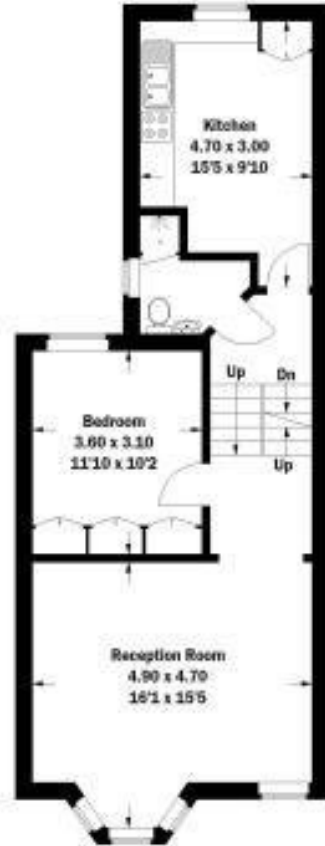
Approximate Gross Internal Area
 105.2 sq m / 1132 sq ft
 (Excluding Eaves Storage)
 Eaves Storage = 9.4 sq m / 101 sq ft
 Total = 114.6 sq m / 1233 sq ft



 Reduced headroom
 below 1.5 m / 5'0"



Ground Floor



First Floor



Second Floor

Whilst every attempt has been made to ensure the accuracy of the floor plan, measurements are approximate and not to scale.
 No guarantee is given on the total square footage of the property quoted on the plan. Figures given are for guidance.
 Plan is for illustration purposes only.

This floorplan is for illustration purposes only and is not to scale. The position and size of doors, windows, appliances and other features are approximate.

Deposit: £0.00

Holding Deposit:

Council Tax Band:

Where no figures are shown, we have been unable to ascertain the information. All figures that are shown were correct at the time of printing.

North Kensington | 020 7792 5000 | northkensington@winkworth.co.uk

Winkworth

for every step...

winkworth.co.uk

Winkworth wishes to inform prospective buyers and tenants that these particulars are a guide and act as information only. All our details are given in good faith and believed to be correct at the time of printing but they don't form part of an offer or contract. No Winkworth employee has authority to make or give any representation or warranty in relation to this property. All fixtures and fittings, whether fitted or not are deemed removable by the vendor unless stated otherwise and room sizes are measured between internal wall surfaces, including furnishings.