



## **NORTHUMBERLAND PLACE, W2**

**£895 PER WEEK (£3,878.33 PCM) Unfurnished**

**A VERY CHARMING AND NEWLY REFURBISHED TWO BEDROOM MAISONETTE WITH ITS OWN PRIVATE GARDEN.**

Long Let, 2 Bedrooms, 1 Reception Room, 1 Bathroom, Flat/Apartment, Basement, Patio, Unfurnished, 730 Approx. Sq Ft





## DESCRIPTION:

The flat is laid out over two levels and comprises a large double bedroom with built in storage, second single bedroom, smartly finished bathroom, separate kitchen and large double reception room with high ceilings and floor to ceiling sash windows. The property has a Juliet balcony to the front of the property and also benefits from the use of the front outside space in addition to the back garden. The property is available unfurnished and viewings are highly recommended.

## LOCATION:

Northumberland Place is a quiet residential tree lined street, running north from Artesian Road, moments away from the popular stretch of Westbourne Grove, home to many of Notting Hill's most popular boutiques and restaurants.

## LOCAL AUTHORITY AND COUNCIL TAX BAND:

City Of Westminster (Band E)

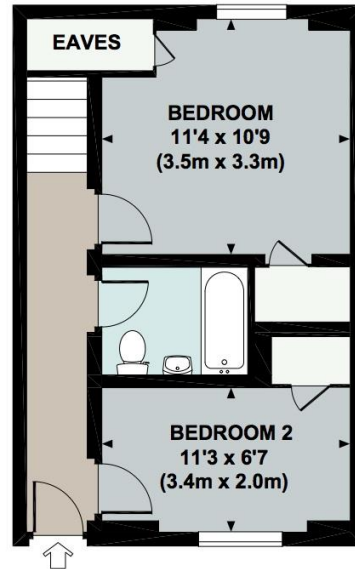
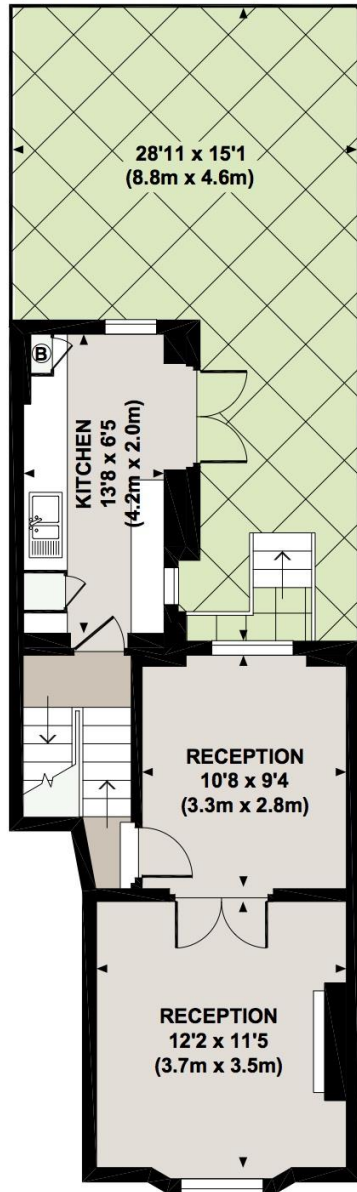


# NORTHUMBERLAND PLACE, W2



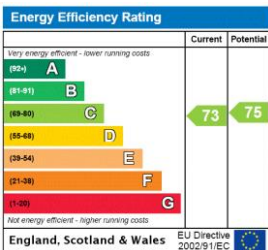
Approx. gross internal area 730 Sq Ft. / 67.9 Sq M.

Approx. gross internal area 743 Sq Ft. / 69.1 Sq M. Inc. Eaves Storage



All measurements are approximate and for illustration purposes only as defined by the RICS Code of Measuring Practice © 2013  
Dowling Jones Design www.dowlingjones.com 020 7610 9933

This floorplan is for illustration purposes only and is not to scale. The position and size of doors, windows, appliances and other features are approximate.



Notting Hill | 0207 727 3227 | nottinghill@winkworth.co.uk



winkworth.co.uk

for every step...

winkworth wishes to inform prospective buyers and tenants that these particulars are a guide and act as information only. All our details are given in good faith and believed to be correct at the time of printing but they don't form part of an offer or contract. No Winkworth employee has authority to make or give any representation or warranty in relation to this property. All fixtures and fittings, whether fitted or not are deemed removable by the vendor unless stated otherwise and room sizes are measured between internal wall surfaces, including furnishings.