



CHURCHILL GARDENS, UK, SW1V

£475,000

LEASEHOLD

At a glance...

- Two Double Bedrooms
- 1st Floor
- Good Condition
- Balcony
- Nice Outlook
- Council Tax Band: C

Winkworth

for every step...



Energy Efficiency Rating		
	Current	Potential
Very energy efficient - lower running costs		
(92+) A		
(81-91) B		
(69-80) C	74	75
(55-68) D		
(39-54) E		
(21-38) F		
(1-20) G		
Not energy efficient - higher running costs		
England, Scotland & Wales	EU Directive 2002/91/EC	

CHURCHILL GARDENS, UK, SW1V

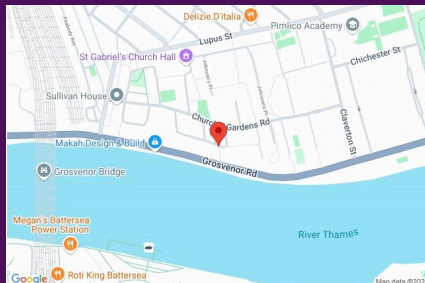
£475,000

LEASEHOLD

Wilkins House is well located just off Grosvenor Road and close to the river Thames, an ideal location for Pimlico underground station, buses to Victoria and the amenities of Lupus Street.

This flat offers two fantastic double bedrooms, a bathroom and separate cloakroom, large entrance hall, reception room with ample space for dining, smart kitchen and a lovely balcony overlooking the gardens and river to the rear.

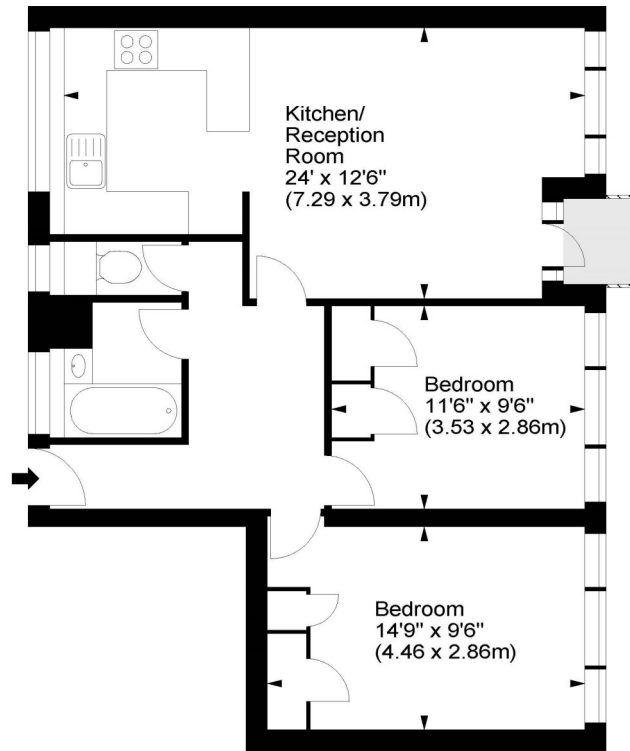
An ideal opportunity to acquire an excellent rental investment or central London home.



winkworth wishes to inform prospective buyers and tenants that these particulars are a guide and act as information only. All our details are given in good faith and believed to be correct at the time of printing but they don't form part of an offer or contract. No winkworth employee has authority to make or give any representation or warranty in relation to this property. All fixtures and fittings, whether fitted or not are deemed removable by the vendor unless stated otherwise and room sizes are measured between internal wall surfaces - including fire-chimneys.

Wilkins House, SW1

Approx. Gross Internal Area
680 Sq Ft - 63.17 Sq M



First Floor

For illustration purposes only. Not to scale.
All measurements are taken and shown at floor level.
www.r3photography.co.uk © Photography / Floor Plans / Lease Plans / EPCs



Pimlico & Westminster

020 7828 1786

pimlico@winkworth.co.uk

winkworth.co.uk/pimlico-westminster

Winkworth

for every step...