



## 4 BELMONT COTTAGES

BELMONT WOODSPEEN NEWBURY RG20 8BW

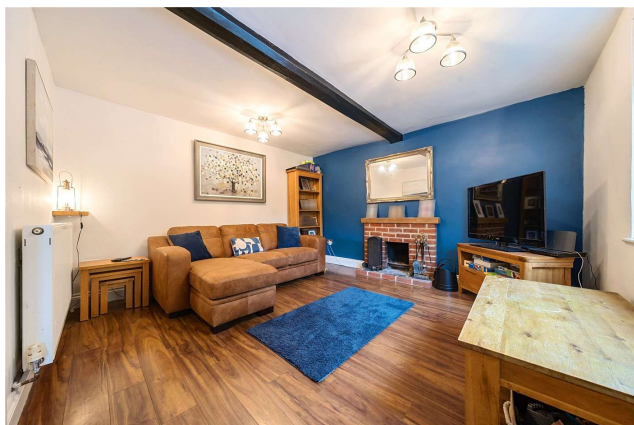
**A beautiful three double bedroom family home with a generous, private driveway, large south-east facing garden and countryside views, all within a row of just five houses in a rural setting.**

As you enter the property, you're greeted by the kitchen diner. The kitchen is modern with wooden worktops and white units. The dining room is open plan with the kitchen and provides a great social space for hosting and enjoying family time. The living room has great views across the garden and has characterful features such as wooden beams and an exposed brick fireplace.

To the first floor are three double bedrooms, all with large windows letting in an abundance of natural light and the master bedroom being situated at the rear, gaining from garden and woodland views. The family bathroom has white tiling and a shower over the bath.

To the rear is a fantastic sized rear garden. There is a small patio area immediately as you enter the garden and the rest is mainly laid to lawn.

To the front of the property is a generous gravel driveway, also housing a large shed which is perfect for extra storage.



**Winkworth**

## AT A GLANCE

- Kitchen Diner
- Living Room With Log Burner
- Three Double Bedrooms
- Family Bathroom
- Generous Driveway
- Large Rear Garden

## UTILITIES

There is ultrafast broadband available in the area and there are no known mobile coverage issues.

The property is connected to mains electric and water and operates on oil fired central heating and an individual soakaway septic tank.

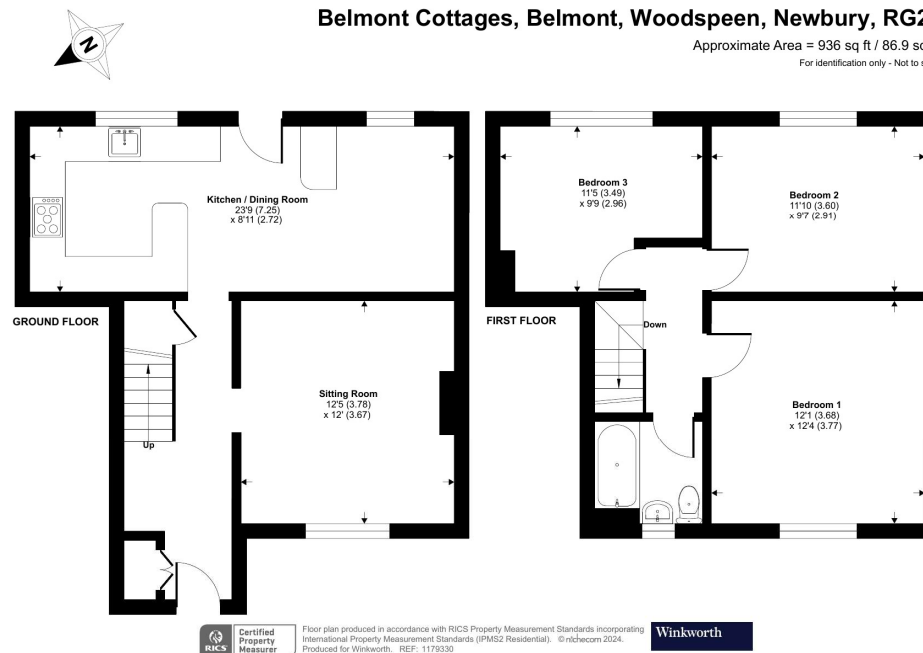
EPC E  
West Berkshire Council Tax Band D

## DIRECTIONS

What3words///hips.theme.bottle

## Belmont Cottages, Belmont, Woodspen, Newbury, RG20

Approximate Area = 936 sq ft / 86.9 sq m  
For identification only - Not to scale



## Newbury Office

43 Northbrook Street, Newbury, Berkshire RG14 1DT  
01635 552552 | [newbury@winkworth.co.uk](mailto:newbury@winkworth.co.uk)

[winkworth.co.uk/newbury](http://winkworth.co.uk/newbury)

# Winkworth

See things differently.