



ST. THOMAS ROAD, HOUNSLOW, W4  
**£600,000 FREEHOLD**

## THREE BEDROOM TERRACED HOUSE

Chiswick | 020 8994 7096 | [chiswick@winkworth.co.uk](mailto:chiswick@winkworth.co.uk)

**Winkworth**

for every step...

[winkworth.co.uk](http://winkworth.co.uk)





### **DESCRIPTION:**

A well-proportioned three bedroom house offering enormous scope to improve and extend subject to the usual planning consents. Precedent set on the road.

Ideally positioned in Grove Park close to schools and train links into central London. No onward chain.

### **ACCOMMODATION**

Freehold

3 Bedrooms

1 Reception Room

1 Bathroom, House

Terraced, Garden

Unmodernised



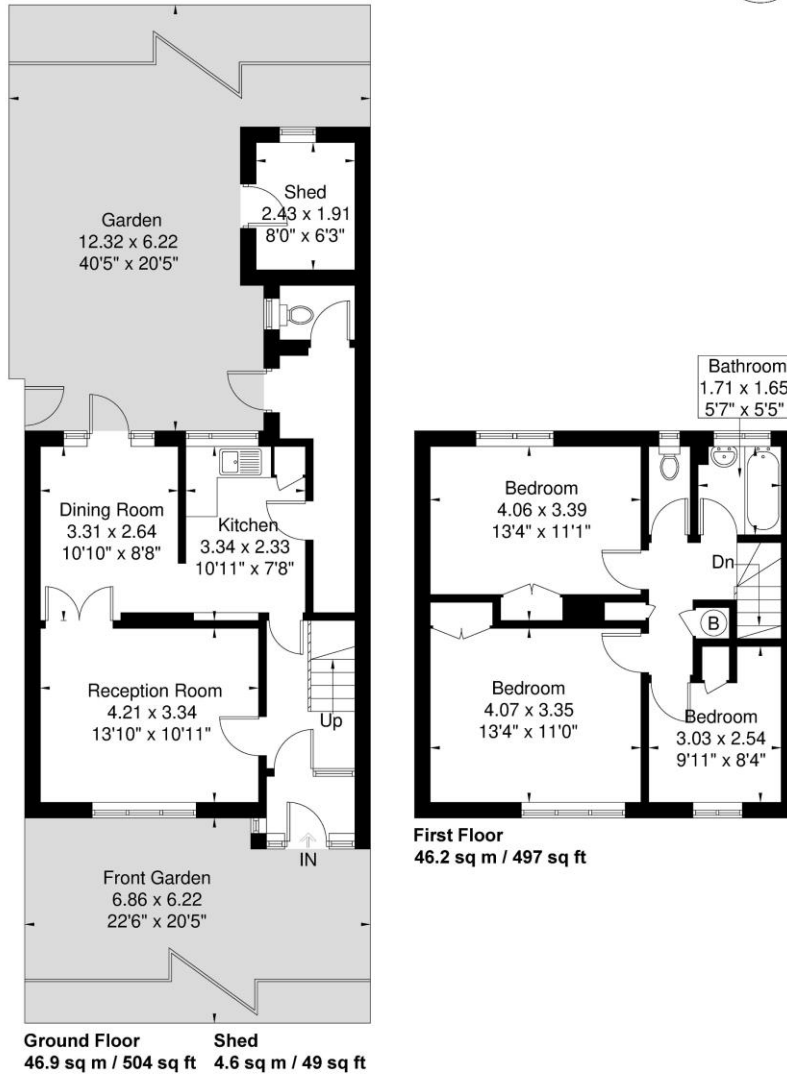


# Saint Thomas Road

Approximate Gross Internal Area = 93.1 sq m / 1002 sq ft

Shed = 4.6 sq m / 49 sq ft

Total = 97.7 sq m / 1051 sq ft



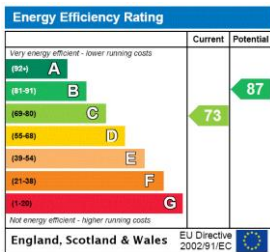
**Winkworth**

Although every attempt has been made to ensure accuracy, all measurements are approximate.

The floorplan is for illustrative purposes only and not to scale.

© www.perspective.co.uk

This floorplan is for illustration purposes only and is not to scale. The position and size of doors, windows, appliances and other features are approximate.



Chiswick | 020 8994 7096 | chiswick@winkworth.co.uk



for every step...

winkworth.co.uk

Winkworth wishes to inform prospective buyers and tenants that these particulars are a guide and act as information only. All our details are given in good faith and believed to be correct at the time of printing but they don't form part of an offer or contract. No Winkworth employee has authority to make or give any representation or warranty in relation to this property. All fixtures and fittings, whether fitted or not are deemed removable by the vendor unless stated otherwise and room sizes are measured between internal wall surfaces, including furnishings.