



ODHAMS WALK, LONDON, WC2H  
£760,000 LEASEHOLD

## A THREE BEDROOM APARTMENT WITH A PRIVATE TERRACE IN A PRIME COVENT GARDEN LOCATION.

Leasehold: Approx. 48 years remaining | Service Charge: Approx. £2,690 per annum |  
Ground Rent: Approx. £10 per annum | Council Tax: Band F, £1408 | EPC: TBC

West End | 020 7240 3322 | westend@winkworth.co.uk

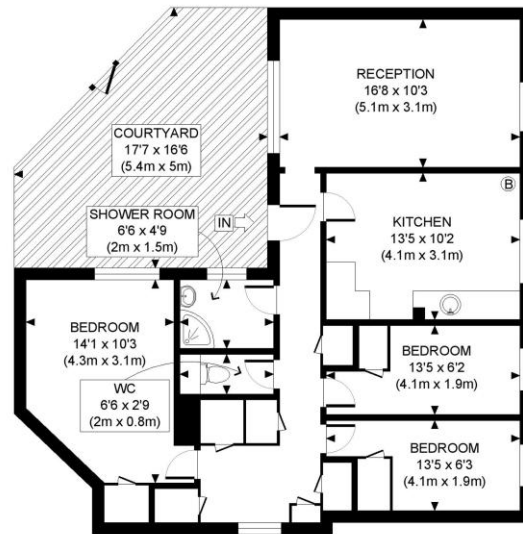
**Winkworth**

for every step...

winkworth.co.uk

## DESCRIPTION:

The property is located in Odham's Walk, a well maintained and popular residential development, conveniently and impressively located just off Long Acre, Neal Street and Shelton Street. The third floor flat is in good but dated order throughout. There are three bedrooms, an eat-in kitchen and a reception room and a shower room. Odhams Walk is a 1970's award winning semi-gated development with stepped housing levels and impressive communal areas. Leases are extendable, and the law is changing to make the process easier. The central location gives excellent access to all the theatrical, entertainment, dining and retail opportunities of the West End. The nearest Tube stations are Covent Garden and Leicester Square.



SECOND FLOOR  
GROSS INTERNAL  
FLOOR AREA 838 SQ FT

APPROX. GROSS INTERNAL FLOOR AREA: 838 SQ FT/ 78 SQM

Winkworth

This plan is for illustrative purposes only and should be used as such by any prospective client. Whilst every attempt has been made to ensure the accuracy of the Floor Plan contained here, measurements of the doors, windows, rooms and any other items are approximate and no responsibility is taken for any errors, omissions, or misstatement. The services, systems and appliances shown have not been tested and no guarantee as to the operability or efficiency can be given.

PROPERTY PHOTO PLANS

This floorplan is for illustration purposes only and is not to scale. The position and size of doors, windows, appliances and other features are approximate.

**Tenure:** Leasehold

**Term:** 48 year and 1 months

**Service Charge:** Approx. £2,690 per annum

**Ground Rent:** Approx. £10 Annually (subject to increase)

**Council Tax Band:** F

Where no figures are shown, we have been unable to ascertain the information. All figures that are shown were correct at the time of printing.

West End | 020 7240 3322 | westend@winkworth.co.uk

Winkworth

for every step...

winkworth.co.uk

Winkworth wishes to inform prospective buyers and tenants that these particulars are a guide and act as information only. All our details are given in good faith and believed to be correct at the time of printing but they don't form part of an offer or contract. No Winkworth employee has authority to make or give any representation or warranty in relation to this property. All fixtures and fittings, whether fitted or not are deemed removable by the vendor unless stated otherwise and room sizes are measured between internal wall surfaces, including furnishings.