



BURMA ROAD, LONDON, N16
OFFERS IN EXCESS OF £575,000 LEASEHOLD

EXCEPTIONAL ONE-BEDROOM FLAT IN THE HEART OF N16.

Stoke Newington | | stokenewington@winkworth.co.uk | 020 3869 9000

Winkworth

winkworth.co.uk

See things differently



DESCRIPTION:

Standing at over 700sq ft, this charming one bedroom, first floor flat offers a perfect blend of contemporary and modern living, whilst retaining character and style.

The generous living space is bright and airy with large bay windows and high ceilings bringing natural light to the room. A warm entryway leads to a large, fully-equipped and distinctive kitchen, boasting plenty of space for dining furniture and storage, making this the ideal home for those with a passion for entertaining. To the rear of the property is a tranquil bedroom with fitted wardrobes and ample storage space. South-easterly facing windows provide light throughout. A sleek 3 piece bathroom suite is situated from the hall by a beautiful, frosted glass panelled door.

Situated in N16, residents will appreciate the proximity to the popular Stoke Newington Church Street, offering an array of local amenities, including cafés, shops and restaurants. The area also benefits from the famous Clissold Park (0.2 miles away), allowing the local community to surround themselves by nature and beautiful scenery.

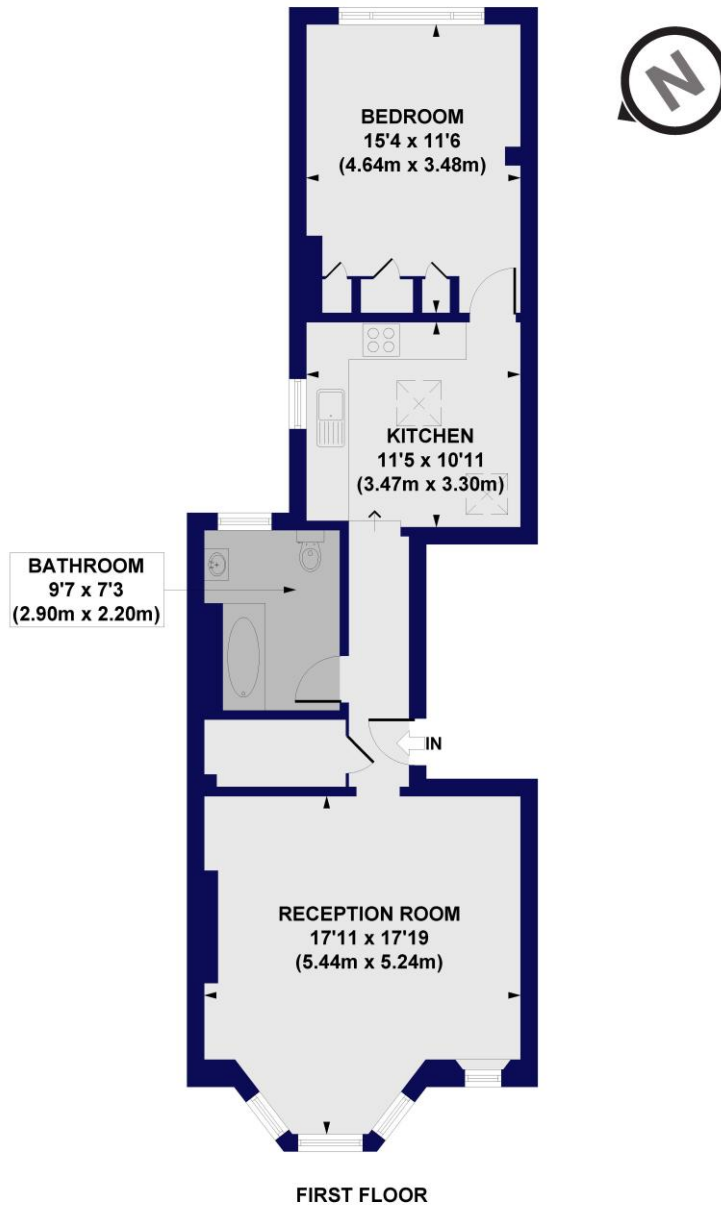
Excellent transport links are closeby, including Overground stations and bus services, providing easy access to central London and making it a perfect base for both work and leisure.

Winkworth



Winkworth

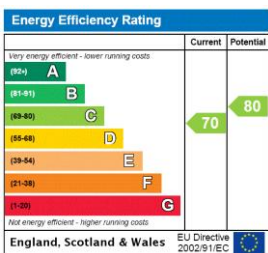
Burma Road, N16
Approx. Gross Internal Floor Area 728 sq. ft / 67.67 sq. m



All measurements of walls, doors, windows, fittings and appliances, including their size and location, are shown as standard sizes and do not constitute any warranty or representation by the seller, their agent or CP Creative. Any intending purchaser must satisfy himself by inspection or otherwise as to the correctness of the information contained in these plans. This plan is for illustrative purposes only and should be used as such by any prospective purchasers.



This floorplan is for illustration purposes only and is not to scale. The position and size of doors, windows, appliances and other features are approximate.



Stoke Newington | stokenewington@winkworth.co.uk | 020 3869 9000



winkworth.co.uk

See things differently

Winkworth wishes to inform prospective buyers and tenants that these particulars are a guide and act as information only. All our details are given in good faith and believed to be correct at the time of printing but they don't form part of an offer or contract. No Winkworth employee has authority to make or give any representation or warranty in relation to this property. All fixtures and fittings, whether fitted or not are deemed removable by the vendor unless stated otherwise and room sizes are measured between internal wall surfaces, including furnishings.