



## 4 AINTREE CLOSE

NEWBURY RG14 7TX

**\*\*NO ONWARD CHAIN\*\*** A fantastic opportunity to purchase a three double bedroom home, close to Newbury town centre with a SOUTH-EAST rear garden and a GARAGE.

As you enter the property via the large entrance hall, the kitchen is to your left. This consists of white cupboards, with a grey top offering lots of storage and worktop space. The living room is to the rear of the property, with stunning garden views. This room is open plan with the dining area and a feature log burner. There is also a cloakroom.

To the first floor are three double bedrooms. Bedroom two offers built in storage and bedrooms one and three overlook the rear garden. The family bathroom has been recently decorated with neutral tiling and a shower over the bath.

To the front of the property is a low maintenance front garden consisting of mature shrubs and steps up to the front door. To the rear is a great sized south east facing garden. There is a small patio area and the rest is mainly laid to lawn. There is rear access.

There is on street parking at the front of the property and a garage within the block across the street.



**Winkworth**

## AT A GLANCE

- 1003ft<sup>2</sup> / 93m<sup>2</sup>
- Kitchen
- Open Plan Living Diner
- Three Double Bedrooms
- Family Bathroom
- South-East Facing Garden
- On Street Parking
- Garage

## UTILITIES

The property is connected to all mains and operates on gas central heating. There are no known mobile coverage issues and there is Ultrafast Broadband available in the area.

EPC - D

West Berkshire Council Tax Band - C

## DIRECTIONS

What3words///retail.sample.bill

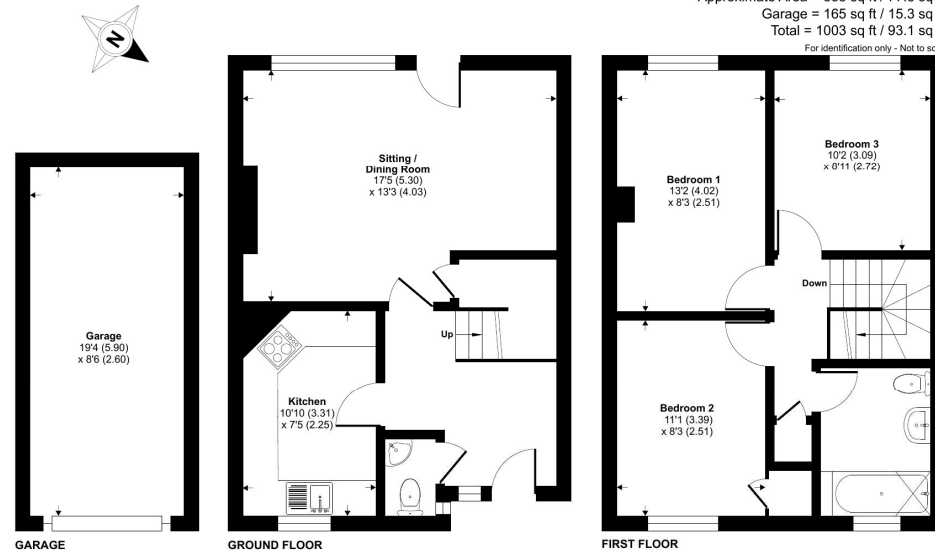
## Aintree Close, Newbury, RG14

Approximate Area = 838 sq ft / 77.8 sq m

Garage = 165 sq ft / 15.3 sq m

Total = 1003 sq ft / 93.1 sq m

For identification only - Not to scale



Floor plan produced in accordance with RICS Property Measurement 2nd Edition, Incorporating International Property Measurement Standards (IPMS2 Residential). © nichicom 2025. Produced for Winkworth. REF: 1002108.

Winkworth



## Newbury Office

43 Northbrook Street, Newbury, Berkshire RG14 1DT

01635 552552 | [newbury@winkworth.co.uk](mailto:newbury@winkworth.co.uk)

[winkworth.co.uk/newbury](http://winkworth.co.uk/newbury)

# Winkworth

See things differently.