



ROE LANE, KINGSBURY, LONDON, NW9  
£650,000 FREEHOLD

## BEAUTIFULLY PRESENTED THREE BEDROOM MID TERRACED HOME

Kingsbury | 020 8204 0000 | [kingsbury@winkworth.co.uk](mailto:kingsbury@winkworth.co.uk)



[winkworth.co.uk](http://winkworth.co.uk)

See things differently



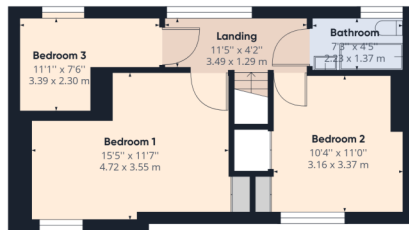
**DESCRIPTION:** A rarely available and beautifully presented property positioned perfectly in the heart of the picturesque 'Roe Green Village' conservation area. Featuring vintage charm with a modern twist, the property is arranged over two floors and made up of a warm and radiant living room adjoining a stylish, light flooded kitchen/ dining area overlooking and allowing access via recently installed bifold doors to an enchanting garden and patio area full of stunning greenery, perfectly suited for hosting outdoor family gatherings and watching children play. Further benefits include a study and convenient W/C on the ground floor. The upper level boasts two double and one single bedrooms, and a family bathroom. An overall gorgeous home situated in a prime yet peaceful, sought after location nestled away from the hustle and bustle of city living, yet still being within walkable proximity to local supermarkets, amenities, transport links including Kingsbury Station (Jubilee Line) and Colindale Station (Northern Line), places of worship and reputable primary and secondary schools. The perfect opportunity to find your forever home not to be missed out on, an internal viewing is a must.







Ground Floor



Floor 1

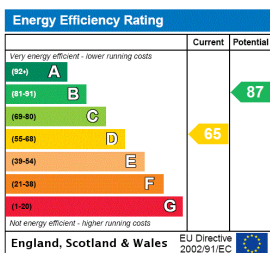
**Approximate total area<sup>(1)</sup>**  
 958.53 ft<sup>2</sup>  
 89.05 m<sup>2</sup>

(1) Excluding balconies and terraces

While every attempt has been made to ensure accuracy, all measurements are approximate, not to scale. This floor plan is for illustrative purposes only.

GIRAFFE360

This floorplan is for illustration purposes only and is not to scale. The position and size of doors, windows, appliances and other features are approximate.



Kingsbury | 020 8204 0000 | kingsbury@winkworth.co.uk

