



MILDMAY PARK, NEWINGTON GREEN, N1
£675 PER WEEK FURNISHED, PART FURNISHED

**WINKWORTH ARE PLEASED TO OFFER THIS BEAUTIFUL, MODERN
THREE BEDROOM MAISONETTE SET JUST OFF NEWINGTON
GREEN**

Islington | 0207 354 2480 | islington@winkworth.co.uk

Winkworth

Tenant Fees Apply: Details of fees for tenant referencing, tenancy agreement admin fees and renewal fees are available on the Winkworth website and the link can be found with the displayed rent for the property. Tenants should ensure they are fully conversant with these upfront fees and other costs that are involved at the outset of the tenancy before making an offer to rent and your local Winkworth office will provide written details upon request.

winkworth.co.uk

See things differently



DESCRIPTION:

A beautiful, modern three bedroom maisonette that has been finished to an excellent standard. Standing at over 1200 sqft this contemporary property boasts its own private entrance; the first floor features a delightful open-plan kitchen and reception room with open brickwork and a homely feel, plus modern bathroom, with three good sized double bedrooms on the second floor.

Mildmay Park is located just off Newington Green which offers a wide array of cafes and restaurants and village atmosphere. Essex road and Upper street are nearby, as is trendy Dalston which is well known for its eclectic mix of pop up restaurants and bars. Transport across London is made easy through Canonbury and Dalston overground stations (quick interchange with the Victoria Underground line at Highbury & Islington Station). The frequent 141 and 21 bus routes provide direct access to the City/London Bridge.

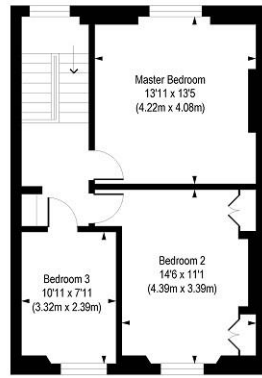
Winkworth



Winkworth

Mildmay Park, N1

Approx. Gross Internal Floor Area 1243 sq. ft / 115.47 sq. m



Second Floor
Gross Internal
Floor Area 559 sq ft



Ground Floor
Gross Internal
Floor Area 97 sq ft



First Floor
Gross Internal
Floor Area 587 sq ft

COMPLIANT WITHRICS CODE OF MEASURING PRACTICE. Floorplan is for illustrative purposes only and is not to scale. Every attempt has been made to ensure the accuracy of the floorplan shown, however all measurements, fixtures, fittings and data shown are an approximate interpretation for illustrative purposes only. Liability for errors, omissions or mis-statement through negligence or otherwise is hereby excluded.

This floorplan is for illustration purposes only and is not to scale. The position and size of doors, windows, appliances and other features are approximate.

Islington | 0207 354 2480 | islington@winkworth.co.uk

winkworth.co.uk

See things differently

Winkworth wishes to inform prospective buyers and tenants that these particulars are a guide and act as information only. All our details are given in good faith and believed to be correct at the time of printing but they don't form part of an offer or contract. No Winkworth employee has authority to make or give any representation or warranty in relation to this property. All fixtures and fittings, whether fitted or not are deemed removable by the vendor unless stated otherwise and room sizes are measured between internal wall surfaces, including furnishings.