



WYATT ROAD, LONDON, N5  
**£1,500,000 FREEHOLD**

## AN EXCEPTIONAL THREE BEDROOM VICTORIAN HOUSE WITH OUTSTANDING LANDSCAPED GARDEN

Highbury | 0207 989 7000 | [highbury@winkworth.co.uk](mailto:highbury@winkworth.co.uk)

**Winkworth**

[winkworth.co.uk](http://winkworth.co.uk)

See things differently



## DESCRIPTION:

This truly stunning mid-terrace Victorian house has been tastefully upgraded by the current owners to create the most wonderful family home. The ground floor benefits from a flexible double reception room to the front and back, flooded with natural light from the bay window and period correct feature fireplace, cornicing and custom inbuilt storage.

A striking kitchen has been enhanced by the addition of floor to ceiling glazing to increase the flow of the property and provide undisturbed views across the tranquil landscaped garden. With glass pivot doors providing access, the outdoor area is bathed in sunlight throughout the day and makes perfect space for hosting. Undercabinet lighting in the kitchen highlights the neutral stone worktops, which hold plenty of storage space both beneath and overhead, whilst concealing an integrated dishwasher and washing machine. Just off the ground floor hallway sits a useful WC alongside ample under-stair storage.

Three double bedrooms and a family sized bathroom feature over the upper levels with master bedroom and second bedroom benefiting from inbuilt wardrobes. The property has been elegantly finished throughout and has the potential to create further accommodation subject to planning consent.

Wyatt Road is located a short distance from Highbury Barn and the highly renowned local amenities, including Godfreys butchers, La Fromagerie, Da Mario's Deli, Bournes Fishmongers and Wine Rack Vintners all of which are hugely popular with locals as well as drawing those from further afield. The green spaces of Clissold Park are moments away as is the highly sought after Stoke Newington Church Street.

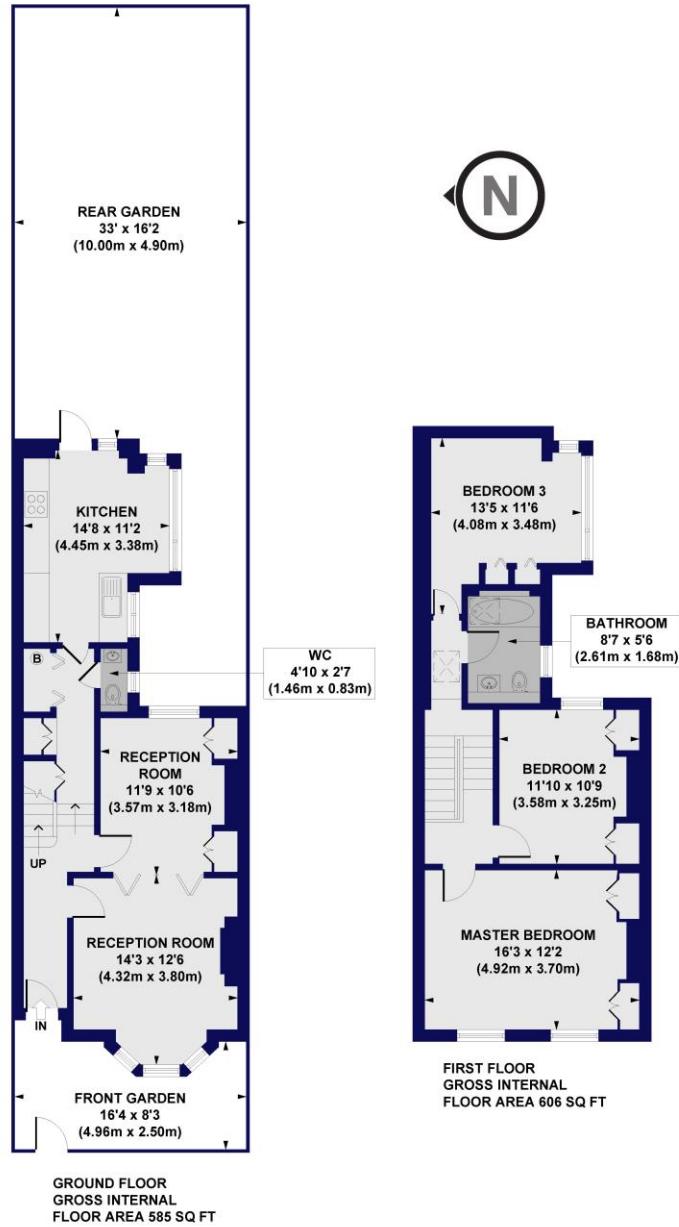
Upper Street is within easy reach and transport links are some of the best around with Arsenal station providing the Piccadilly line and Finsbury Park offering overground services (including the Thameslink network serving the City and Gatwick Airport) alongside direct links to Moorgate as well as underground services on the Victoria line. Numerous bus routes offer effortless transport to the City and West End whilst international links are facilitated from St Pancras.

**Winkworth**



**Winkworth**

**Wyatt Road, N5**  
**Approx. Gross Internal Floor Area 1191 sq. ft / 110.65 sq. m**



All measurements of walls, doors, windows, fittings and appliances, including their size and location, are shown as standard sizes and do not constitute any warranty or representation by the seller, their agent or CP Creative. Any intending purchaser must satisfy himself by inspection or otherwise as to the correctness of the information contained in these plans. This plan is for illustrative purposes only and should be used as such by any prospective purchasers.



This floorplan is for illustration purposes only and is not to scale. The position and size of doors, windows, appliances and other features are approximate.

