



DUNSTANS ROAD, EAST DULWICH, LONDON, SE22
£550,000 SHARE OF FREEHOLD

THIS LARGE TWO BEDROOM GROUND FLOOR
GARDEN FLAT IS SITUATED IN A CENTRAL EAST
DULWICH LOCATION, CLOSE TO DULWICH PARK
AND LORDSHIP LANE.

Dulwich | 020 8299 2722 | dulwich@winkworth.co.uk

Winkworth

Tenure Share of Freehold | Council Tax Band C – London Borough of Southwark

winkworth.co.uk

See things differently



DESCRIPTION:

A charming Victorian flat, situated in a highly sought-after location in SE22. This well-proportioned two-bedroom ground floor flat is located on Dunstons Road, opposite Goodrich Road Primary School and ideally positioned between Dulwich Park (10 minutes' walk) and Peckham Rye Park (5 minutes' walk). The property features a bright reception room at the front, showcasing wood-effect flooring, tall ceilings, and original period details. The newly renovated kitchen, with wooden worktops and built-in appliances, opens onto a private section of a 60ft garden. The bathroom has been updated to a high standard, complementing the serene double bedroom at the rear and an additional, comfortable second bedroom. Conveniently located near the vibrant bars, restaurants, and shops of Lordship Lane, the property also benefits from excellent transport links into Central London via East Dulwich or Forest Hill stations, with connections to the East London tube line.

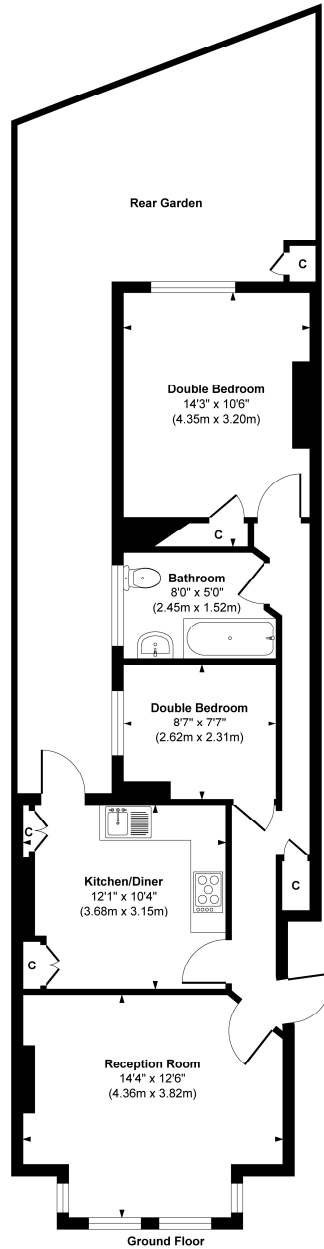
AT A GLANCE

- Two Bedrooms
- Ground Floor Flat
- Large Reception Room
- Eat-in Kitchen-Diner
- Bathroom
- Chain Free
- Close to Dulwich Park & Lordship Lane



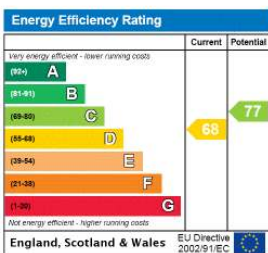


Dunstan's Road



Approx. Gross Internal Floor Area 632 sq. ft / 58.75 sq. m
 illustration for identification purposes only, measurements are approximate, not to scale.
 Produced by Elements Property

This floorplan is for illustration purposes only and is not to scale. The position and size of doors, windows, appliances and other features are approximate.



Dulwich | 020 8299 2722 | dulwich@winkworth.co.uk

Winkworth

winkworth.co.uk

See things differently

Winkworth wishes to inform prospective buyers and tenants that these particulars are a guide and act as information only. All our details are given in good faith and believed to be correct at the time of printing but they don't form part of an offer or contract. No Winkworth employee has authority to make or give any representation or warranty in relation to this property. All fixtures and fittings, whether fitted or not are deemed removable by the vendor unless stated otherwise and room sizes are measured between internal wall surfaces, including furnishings.