



CHURCHILL COURT, BLENHEIM GROVE, PECKHAM RYE, LONDON, SE15  
OIEO £385,000 LEASEHOLD

## THIS WELL PRESENTED ONE DOUBLE BEDROOM TOP FLOOR FLAT WITH A PRIVATE BALCONY IS SET WITHIN A MODERN BLOCK, BEHIND A GATED ENTRANCE.

### DESCRIPTION:

The property comprises a large double bedroom, a bright and spacious reception, modern kitchen, bathroom and a private balcony to the rear. Perfectly situated to benefit from easy access to all the new eateries, shops, bars and restaurants that Peckham Rye and Peckham have to offer. Peckham Rye Station is a 1 minute walk away providing links on the London overground and connections into Victoria, the City and beyond. This is a fantastic flat in an amazing location available to move in immediately.

### AT A GLANCE

- One Double Bedroom
- Spacious Reception Room
- Modern Fitted Kitchen
- Modern Bathroom
- South Facing Private Balcony

Dulwich | 020 8299 2722 | [dulwich@winkworth.co.uk](mailto:dulwich@winkworth.co.uk)

Tenure Leasehold approx. 107 yrs remaining | Council Tax Band B – London Borough of Southwark | Service Charge TBC | Ground Rent TBC

[winkworth.co.uk](http://winkworth.co.uk)

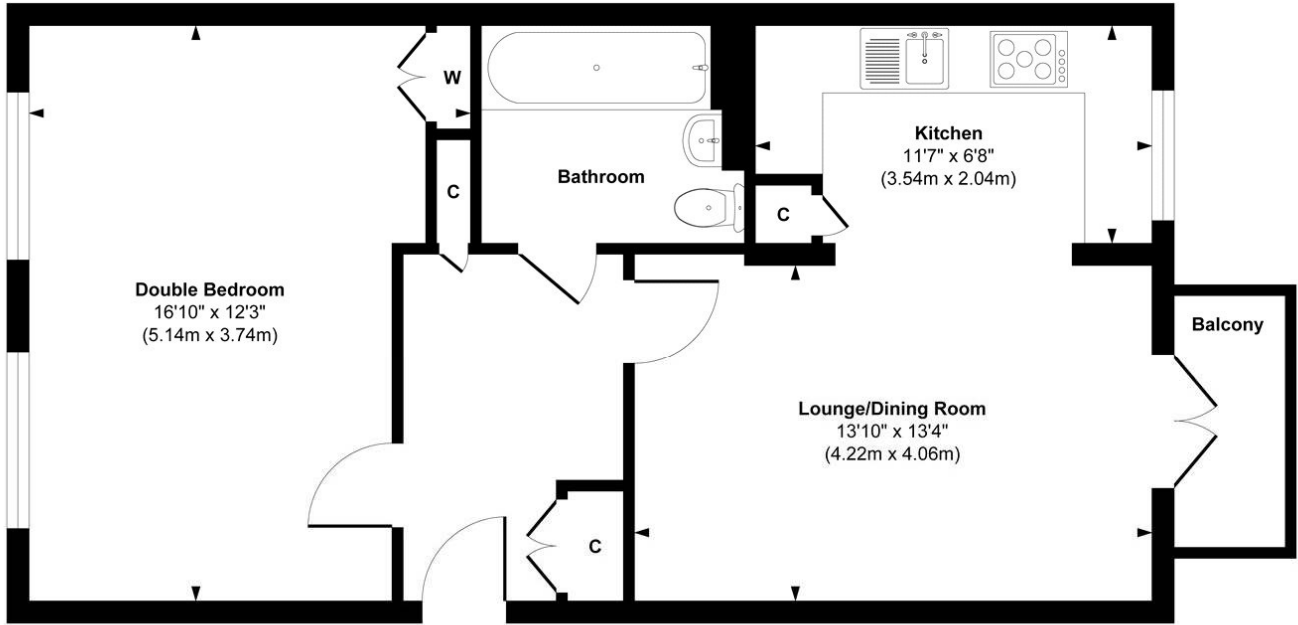
**Winkworth**

See things differently





# Churchill Court

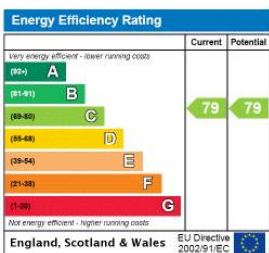


## Third Floor

Approx. Gross Internal Floor Area 554 sq. ft / 51.53 sq. m

Illustration for identification purposes only, measurements are approximate, not to scale.  
Produced by Elements Property

This floorplan is for illustration purposes only and is not to scale. The position and size of doors, windows, appliances and other features are approximate.



Dulwich | 020 8299 2722 | dulwich@winkworth.co.uk



winkworth.co.uk

See things differently

Winkworth wishes to inform prospective buyers and tenants that these particulars are a guide and act as information only. All our details are given in good faith and believed to be correct at the time of printing but they don't form part of an offer or contract. No Winkworth employee has authority to make or give any representation or warranty in relation to this property. All fixtures and fittings, whether fitted or not are deemed removable by the vendor unless stated otherwise and room sizes are measured between internal wall surfaces, including furnishings.