



- LIFT ACCESS
- COMMUNAL GARDENS
- SECOND FLOOR FLAT
- BALCONY
- PURPOSE BUILT BLOCK
- ONE ALLOCATED PARKING SPACE

## FAIRVIEW COURT, HENDON, LONDON, NW4

### £375,000 SHARE OF FREEHOLD

**Tenure:** Share of Freehold

**Service Charge:** Approx £3000 per annum

**Council Tax Band:** Band D

Where no figures are shown, we have been unable to ascertain the information. All figures that are shown were correct at the time of printing.

Hendon | 020 8202 1031 | [hendon@winkworth.co.uk](mailto:hendon@winkworth.co.uk)





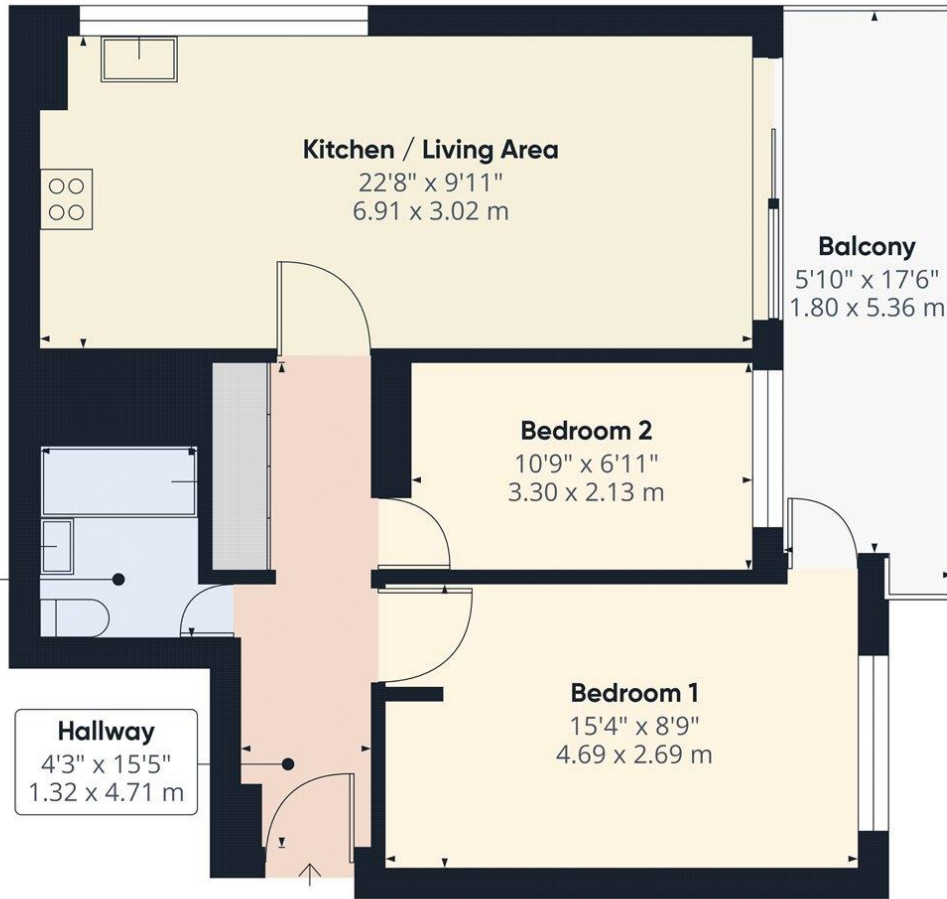
## DESCRIPTION:

This beautifully presented two-bedroom second-floor flat is situated in a purpose-built block with the added convenience of a lift. Boasting a spacious open-plan living area, the property is flooded with natural light, thanks to large windows surrounding the space and a private balcony, perfect for relaxing or entertaining. The modern kitchen is generously sized and ideal for those who love to cook and socialize. The flat also benefits from a newly refurbished bathroom and access to well-maintained communal gardens, providing additional outdoor space to enjoy. Further advantages include one allocated parking space, ensuring convenience for residents.









Approximate total area<sup>(1)</sup>  
647.67 ft<sup>2</sup>  
60.17 m<sup>2</sup>

(1) Excluding balconies and terraces

While every attempt has been made to ensure accuracy, all measurements are approximate, not to scale. This floor plan is for illustrative purposes only.

Calculations were based on RICS IPMS 3C standard. Please note that calculations were adjusted by a third party and therefore may not comply with RICS IPMS 3C.

GIRAFFE360

This floorplan is for illustration purposes only and is not to scale. The position and size of doors, windows, appliances and other features are approximate.

